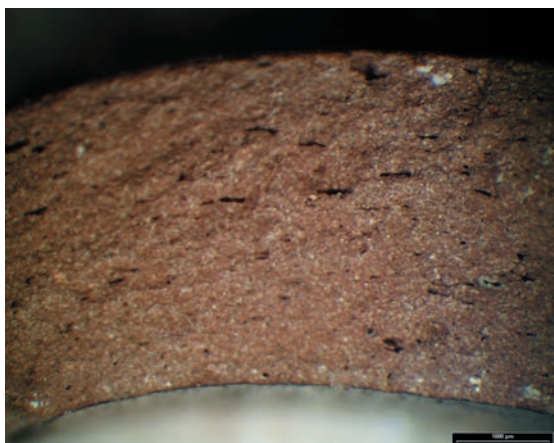


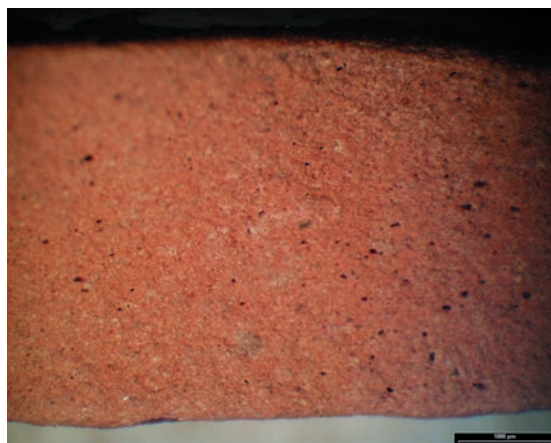
G 1



G 2



G 3



G 4

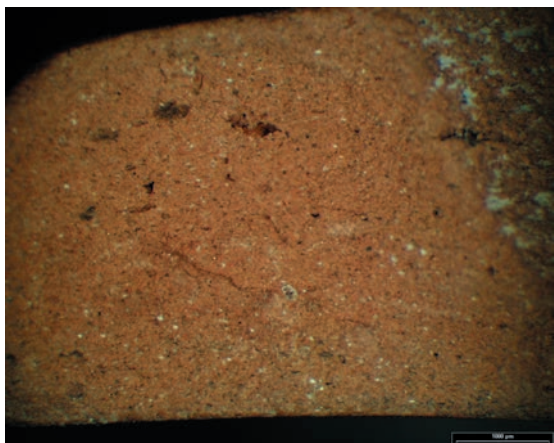


G 5

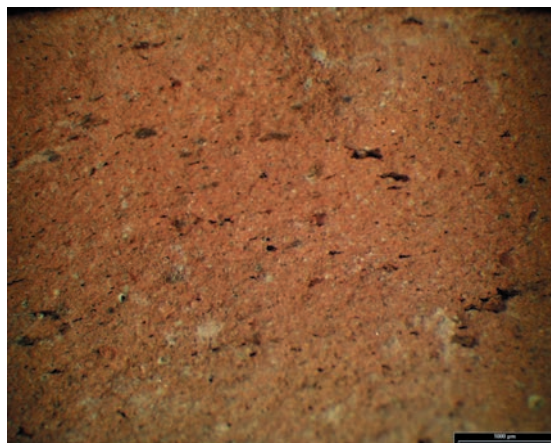


G 6

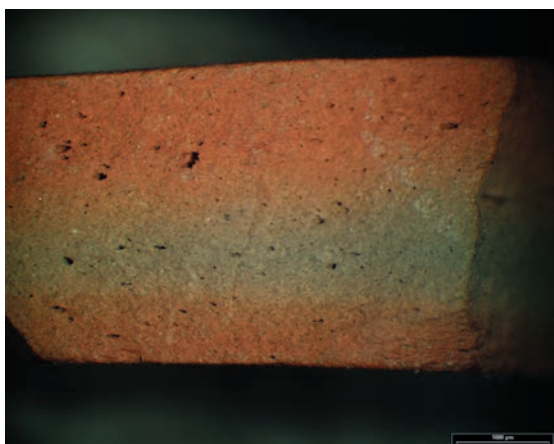
Farbtaf. 1: Scherbentypen der Glanztonware (G 1-6)



FF 1



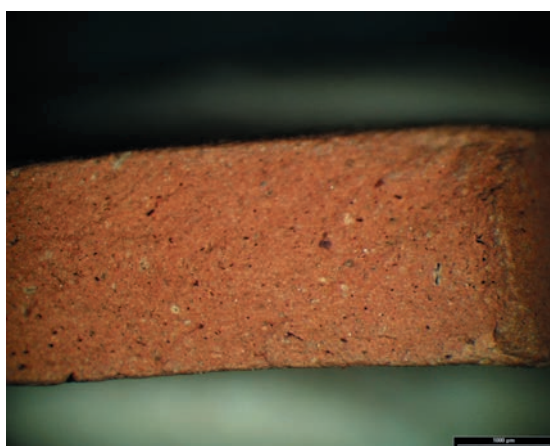
FF 2



FF 3



FF 5



FF 6

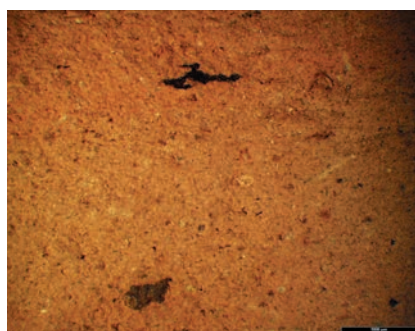
Farbtaf. 2: Scherbentypen der Henkelschalen (FF 1-6)



F 1



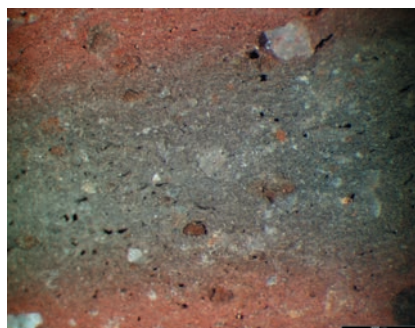
F 2



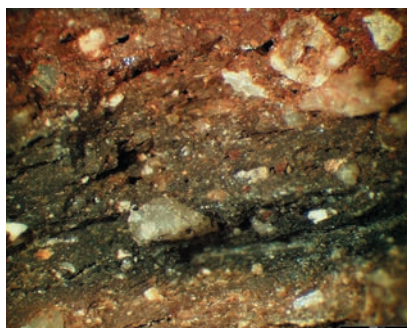
F 4



F 6



F 7



F 8

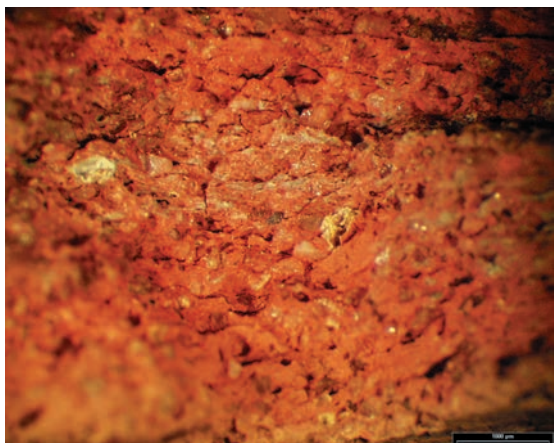


F 9

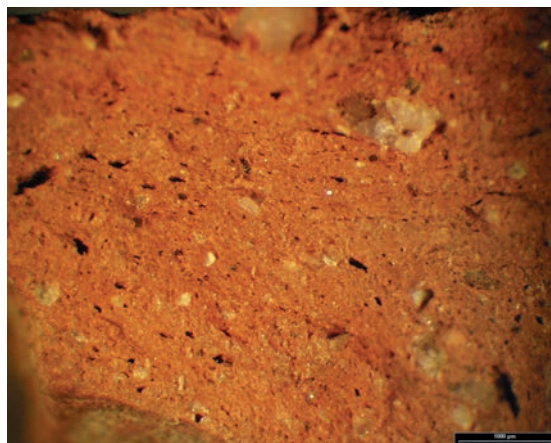


GK 1

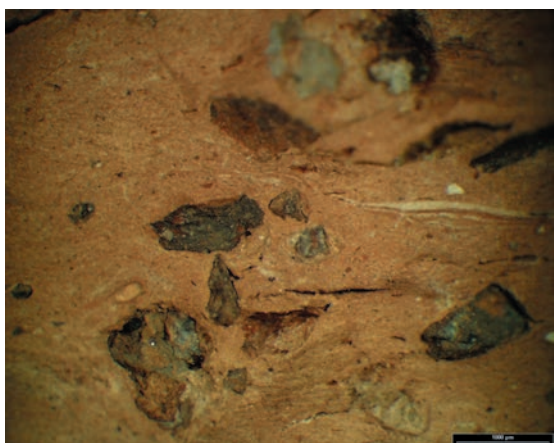
Farbtaf. 3: Scherbentypen der Gebrauchs- und Küchenware (F 1-9, GK 1)



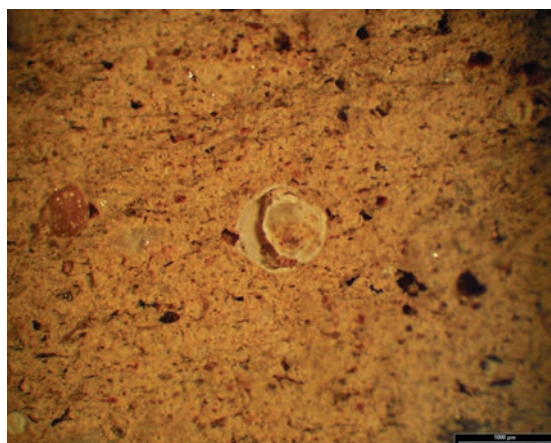
GK 2



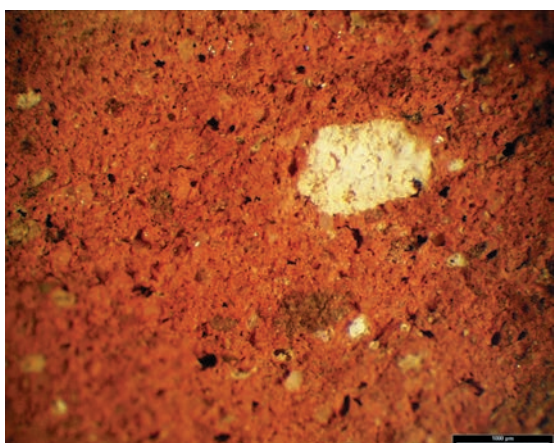
GK 3



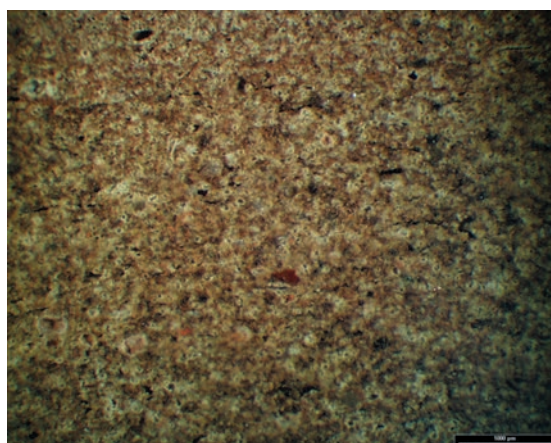
GK 4



GK 5

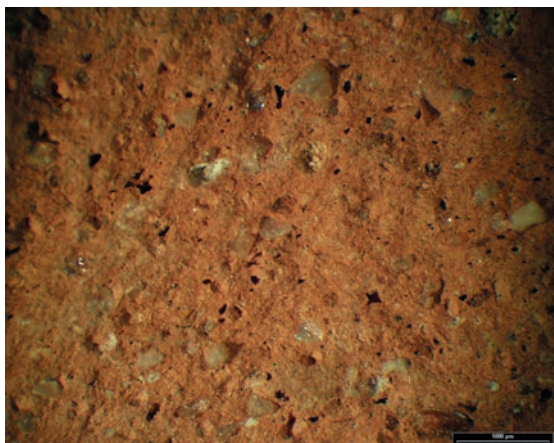


GK 6

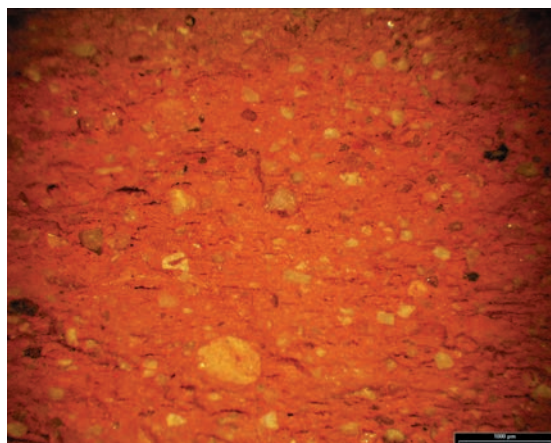


GK 7

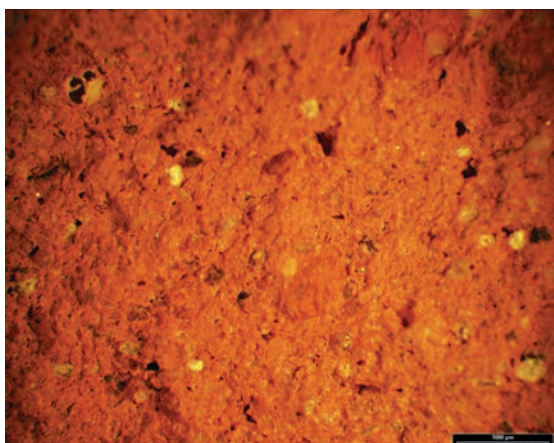
Farbtaf. 4: Scherbentypen der Gebrauchs- und Küchenware (GK 2-7)



A 1



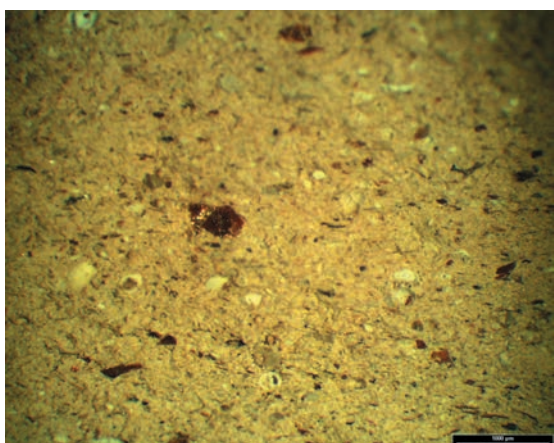
A 2



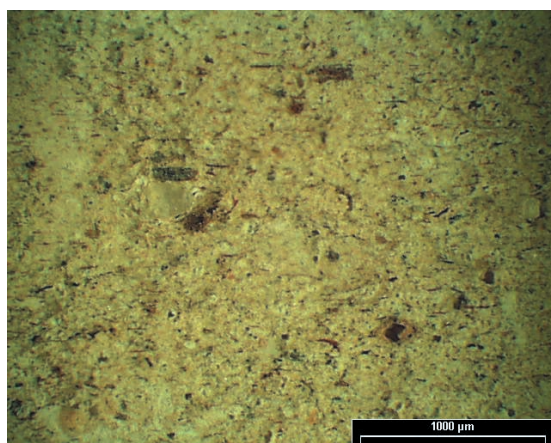
A 3



A 5

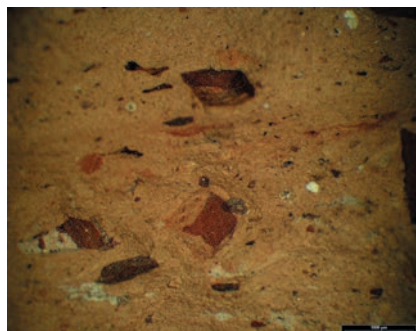


A 6

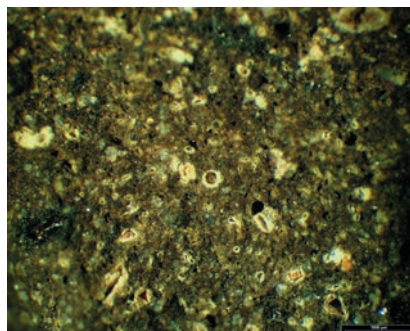


A 7

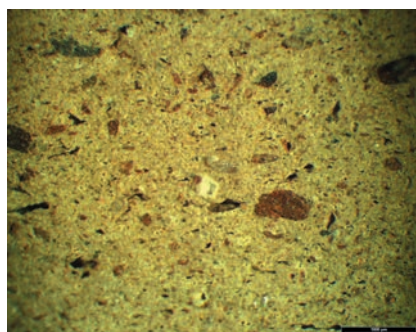
Farbt. 5: Scherbentypen der Amphoren (A 1-7)



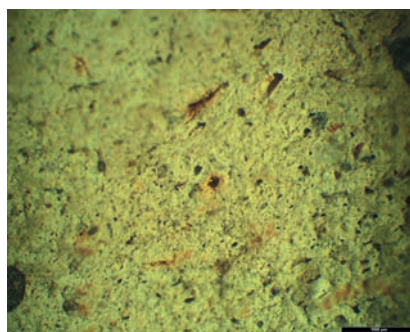
A 8



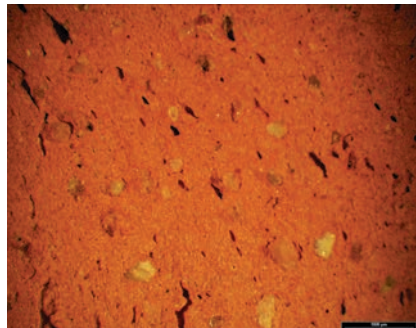
A 10



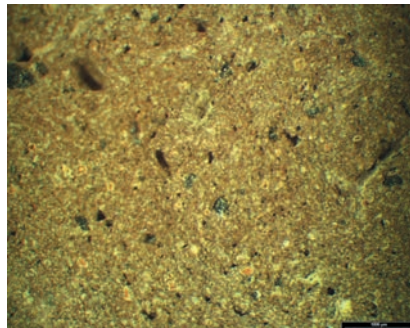
A 11



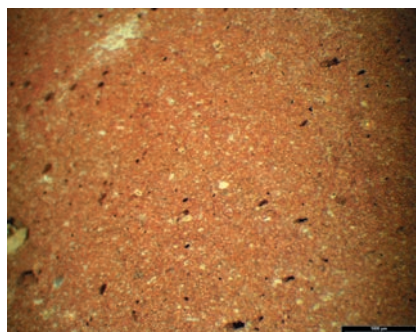
A 12



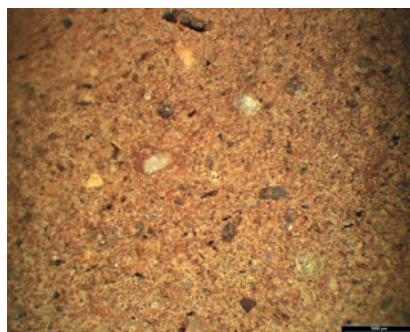
A 13



A 14

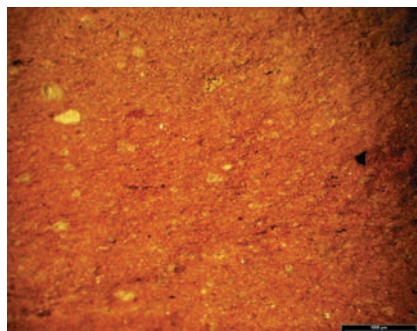


A 15

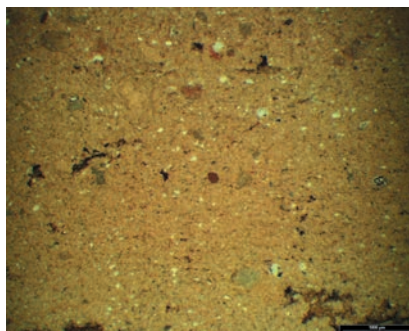


A 16

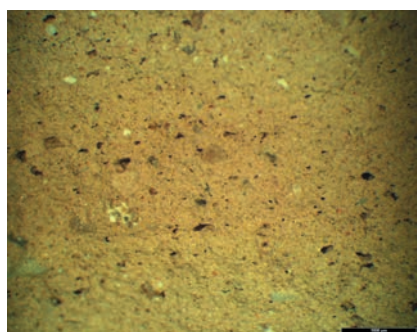
Farbtaf. 6: Scherbentypen der Amphoren (A 8-16)



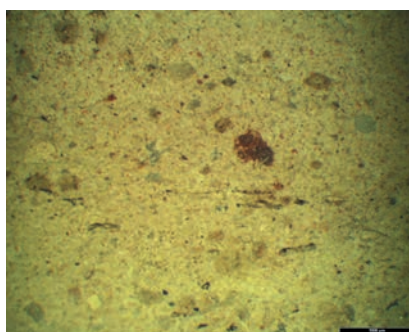
A 17



A 18



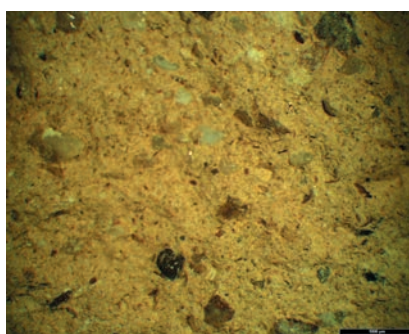
A 18 K



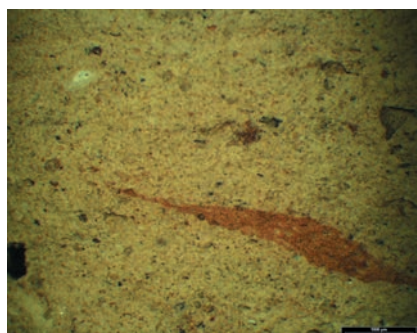
A 19



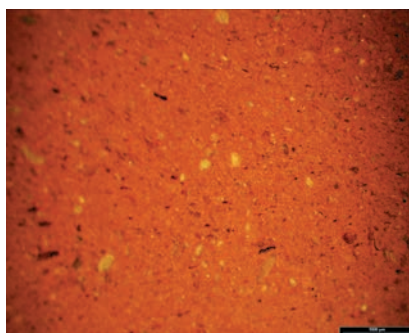
A 20



A 21

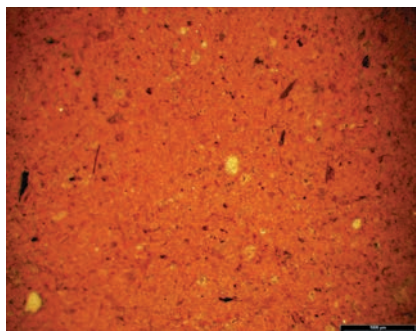


A 22

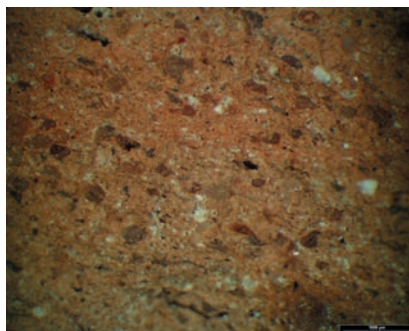


A 23

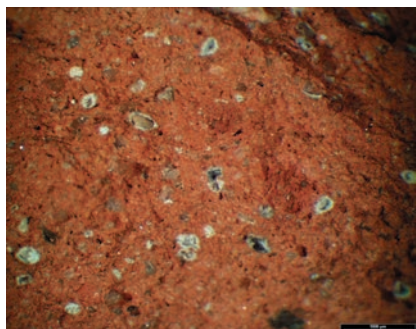
Farbtaf. 7: Scherbentypen der Amphoren (A 17-23)



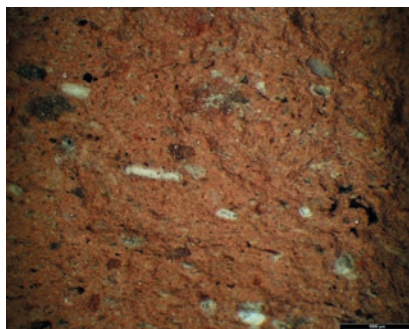
A 24



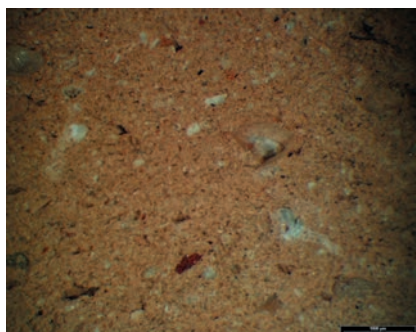
A 25



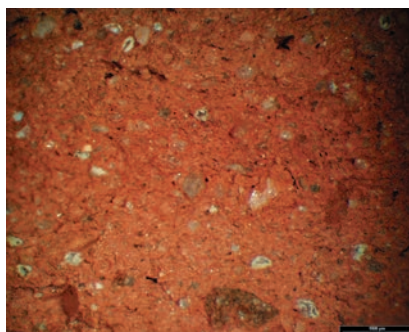
A 26



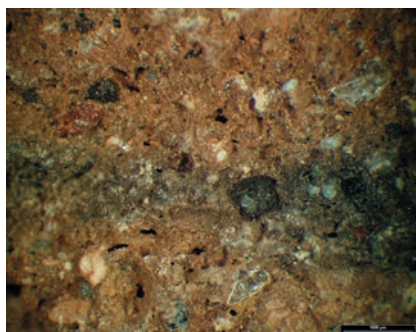
A 27



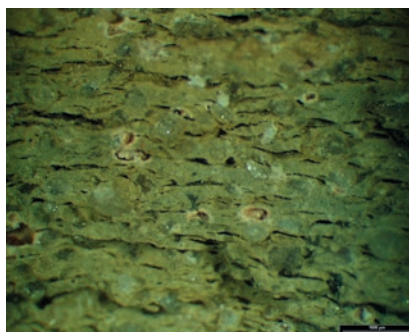
A 28



A 31



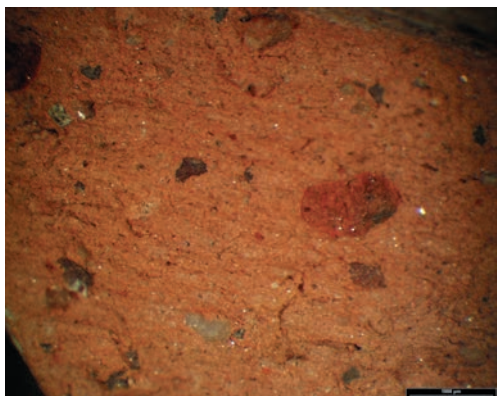
A 32



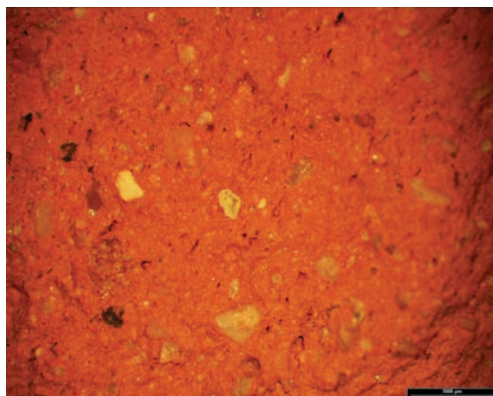
A 33

Farbtaf. 8: Scherbentypen der Amphoren (A 24-33)

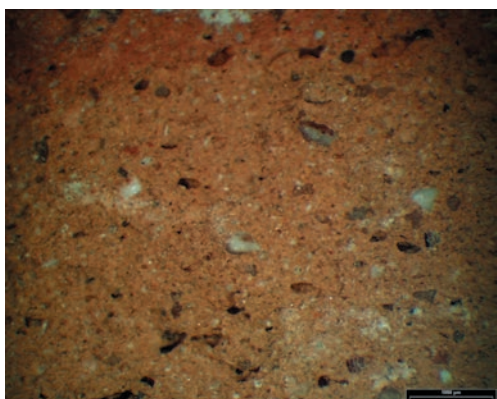




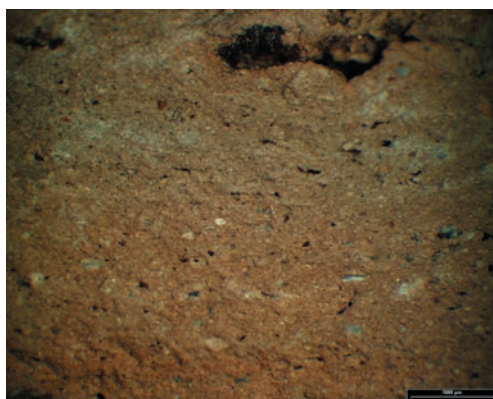
A 34



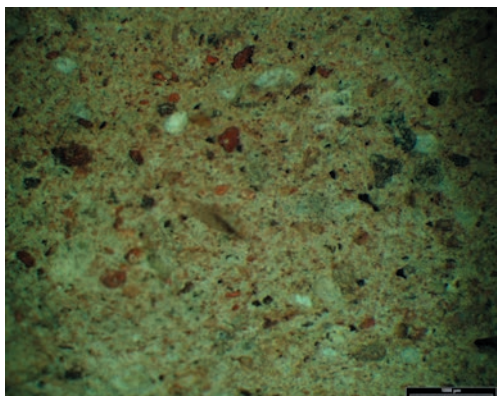
A 35



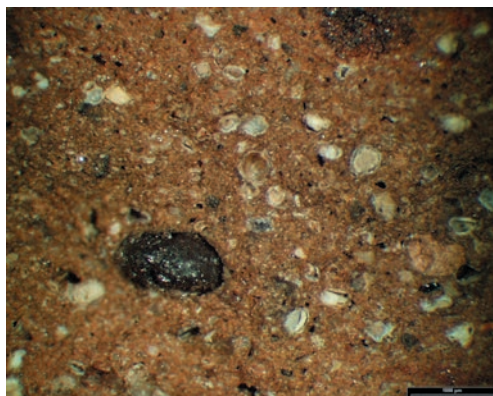
A 36



A 37

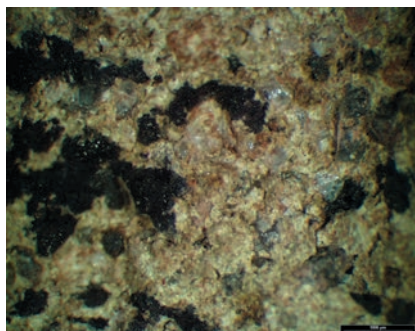


A 38

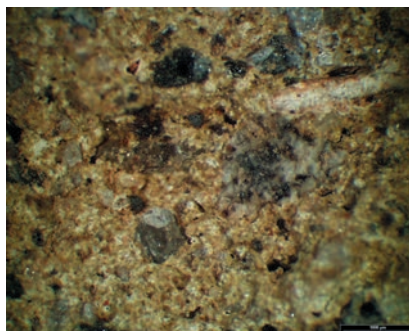


A 39

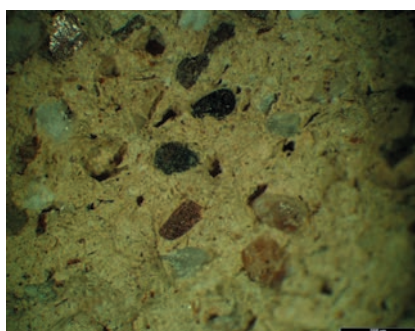
Farbtaf. 9: Scherbentypen der Amphoren (A 34-39)



Z 1



Z 2



Z 3



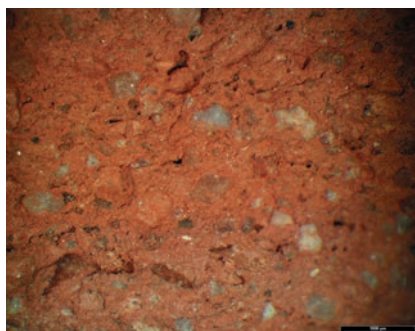
Z 4



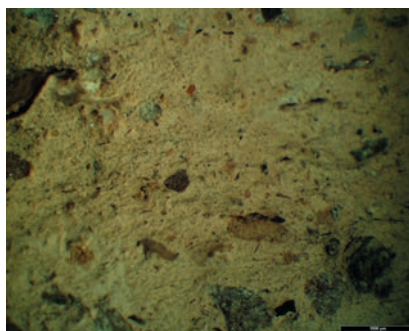
Z 5



Z 6

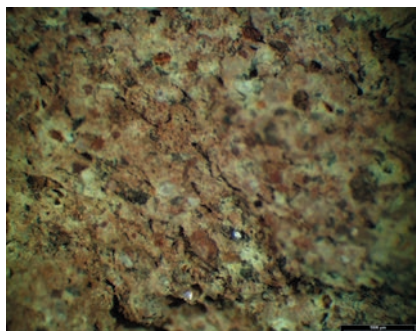


Z 7

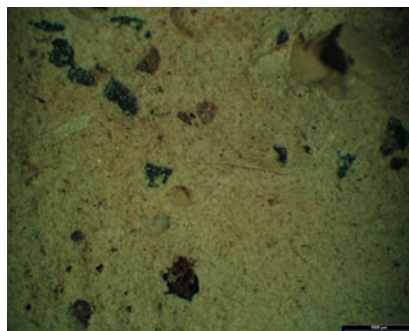


Z 8

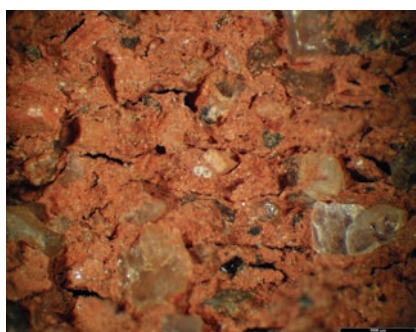
Farbtaf. 10: Scherbentypen der Dachziegel (Z 1-8)



Z 9



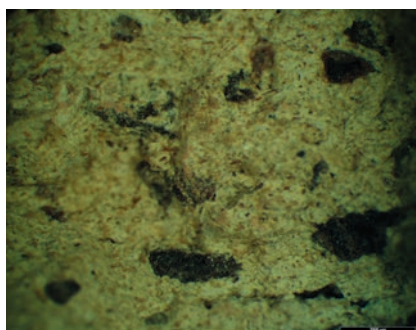
Z 10



Z 11



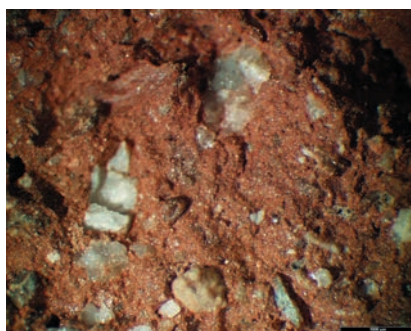
Z 12



Z 13



Z 14

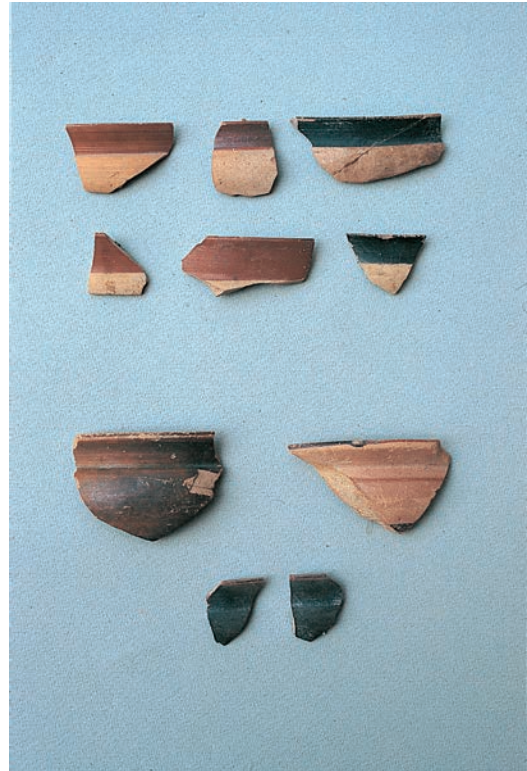


Z 15

Farbtaf. 11: Scherbentypen der Dachziegel (Z 9-15)



12a



12b

Farbtaf. 12 a) I c. 15 Schüssel mit Gitterdekor  
b) Dekorarten der Knickrandschalen  
c) Flachziegel Typ 1 mit schwarzem Überzug und Bemalung mit weißen konzentrischen Kreisen (III b.23 und III b.24)



12c



12c