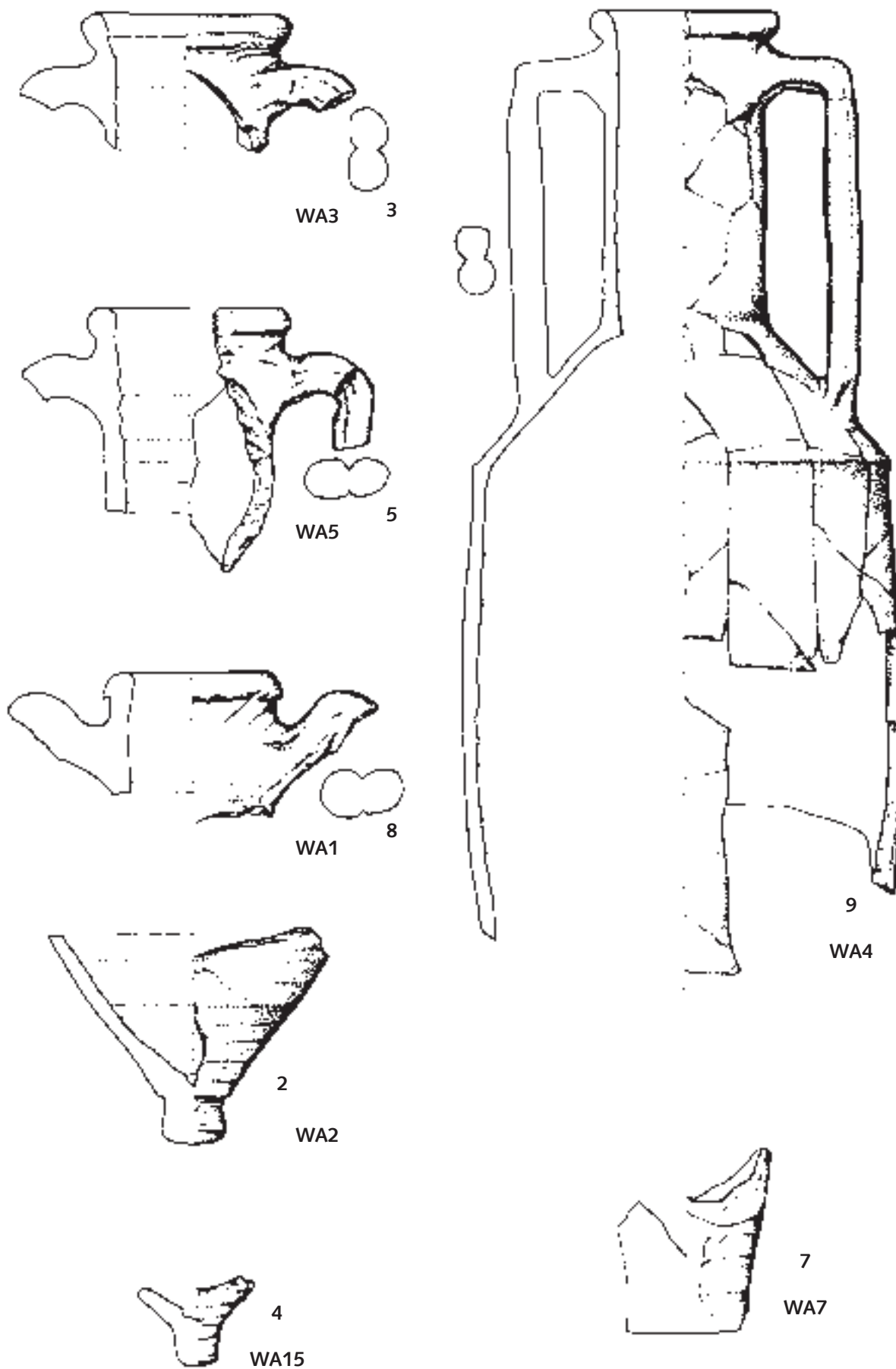
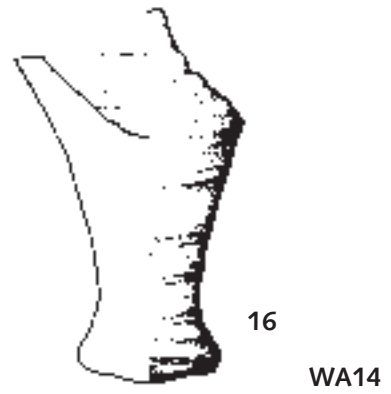
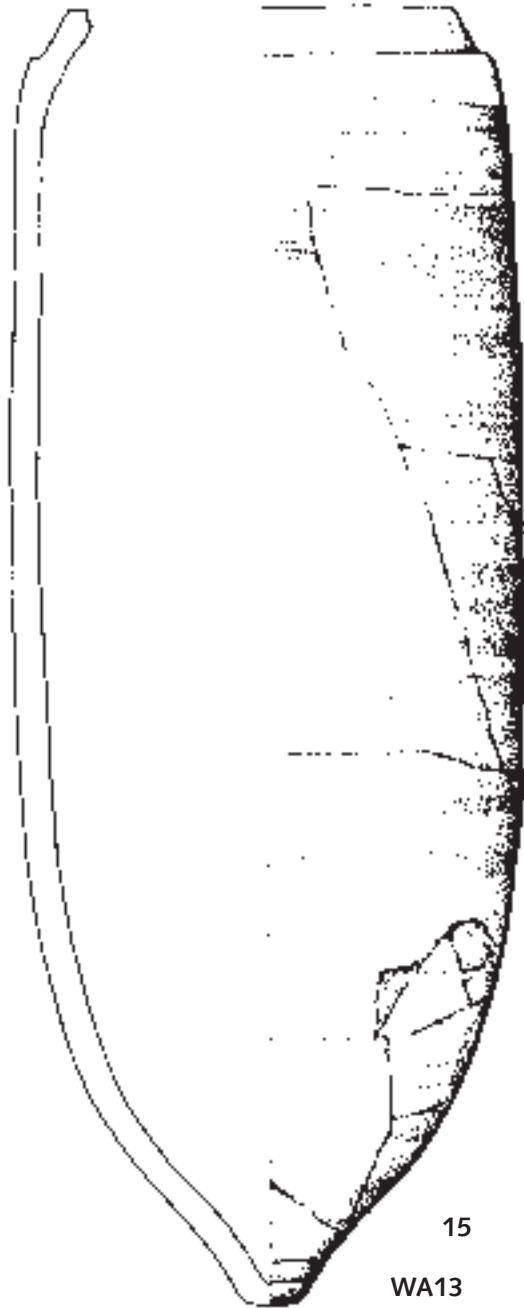
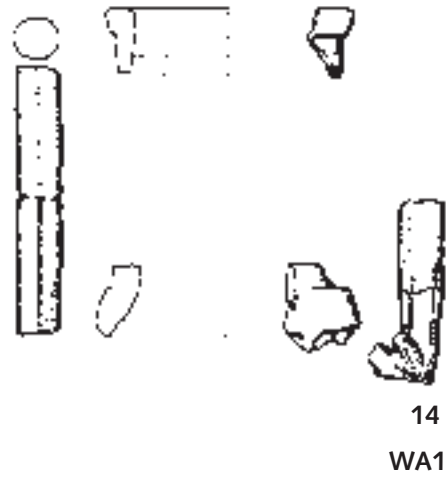
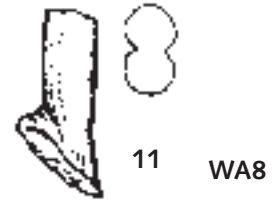
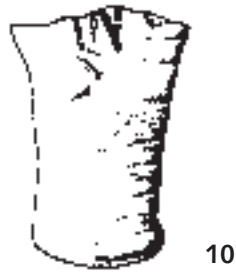


Cat. no. 1 and 6; amphorae Dressel 2-4  
(scale 1:4; drawing: T. Bezaczký/Á. Vári).

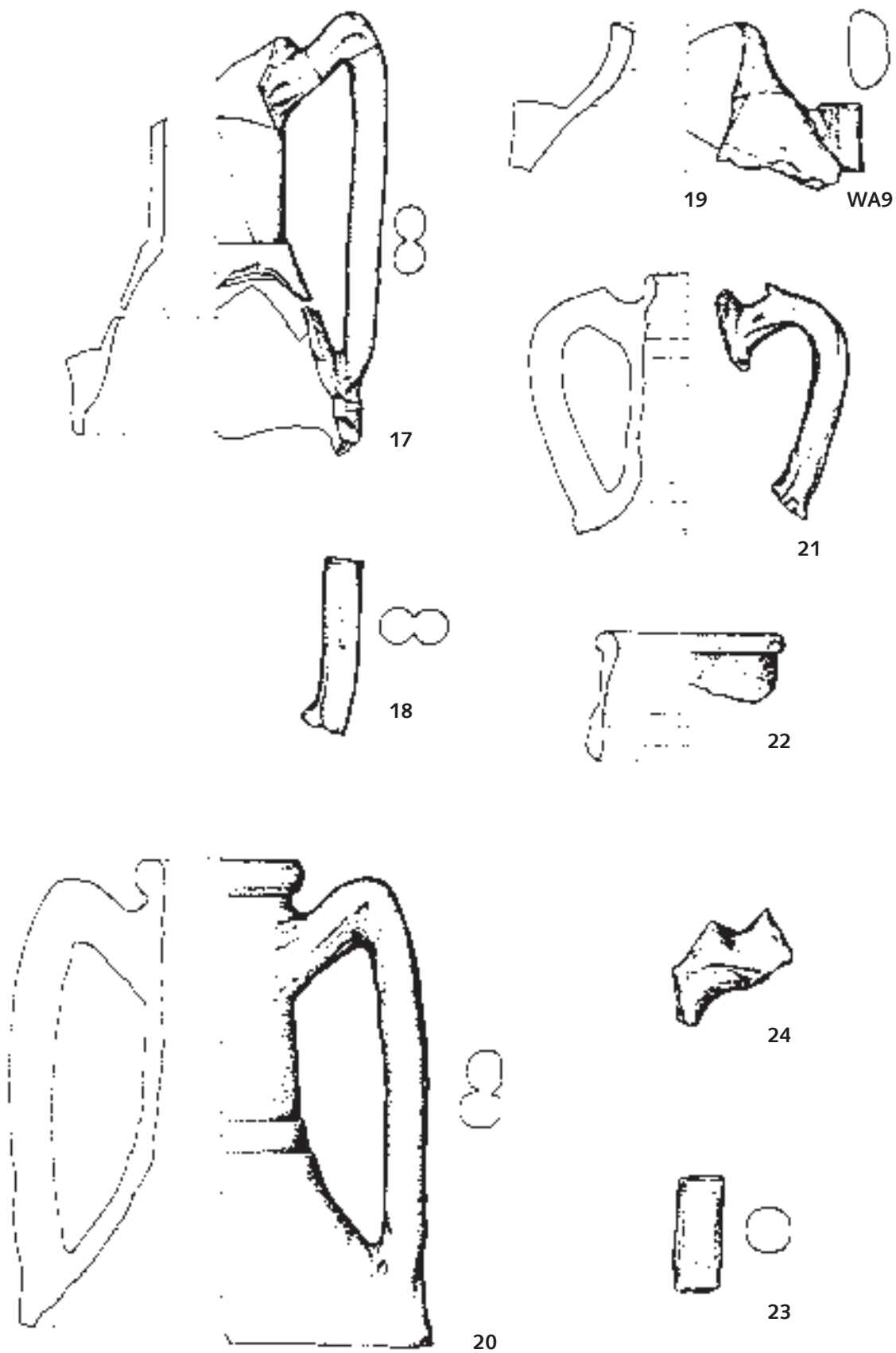
PLATE 2



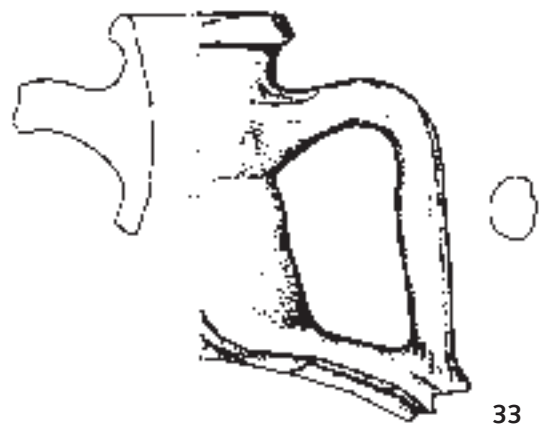
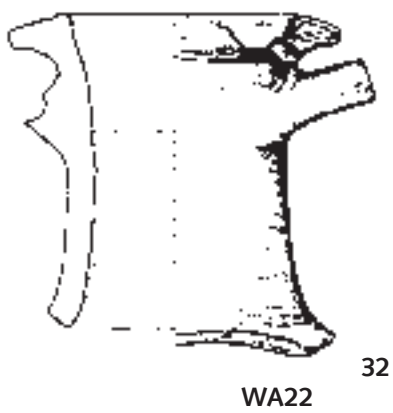
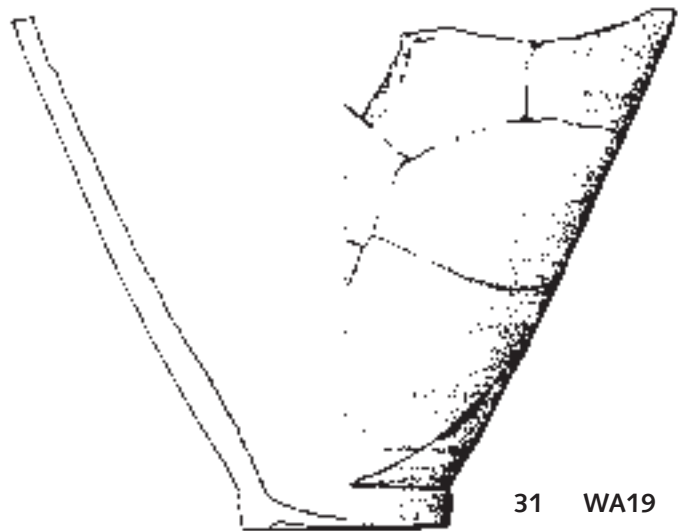
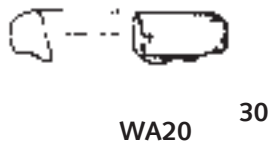
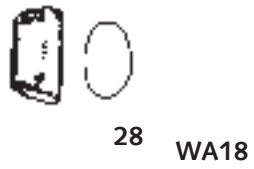
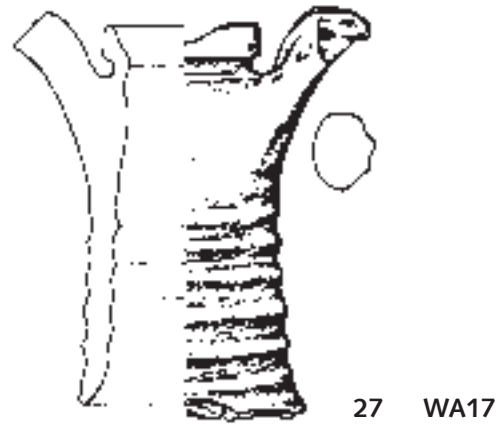
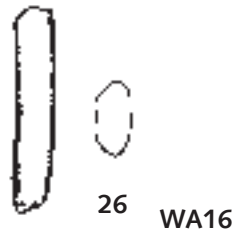
Cat. no. 2-5 and 7-9; amphorae Dressel 2-4 (scale 1:4; drawing: T. Bezczky/Á. Vári).



Cat. no. 10–16; amphorae Dressel 2–4 (scale 1:4; drawing: T. Bezczyk/Á. Vári).

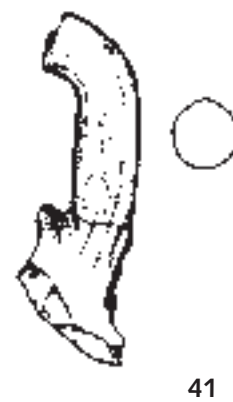
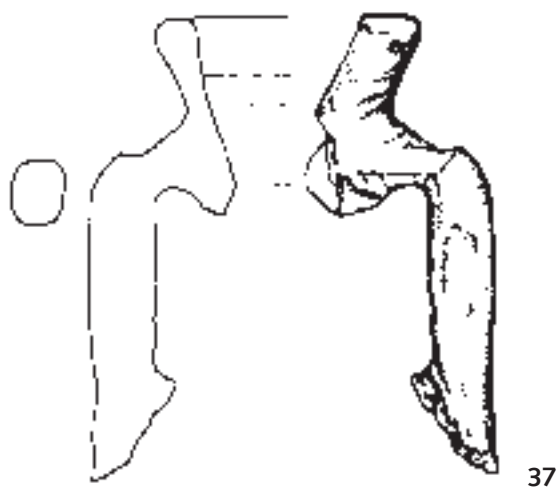
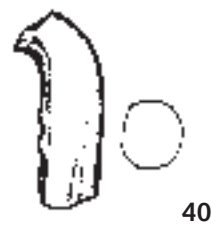
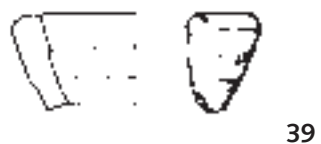
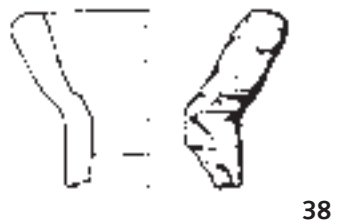
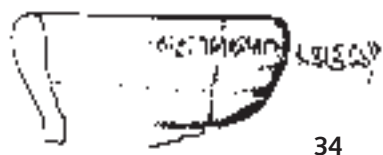


Cat. no. 17–20 (Dressel 2–4). Cat. no. 21 (Crétoise AC4). Cat. no. 22–24 (Rhodian type amphorae)  
(scale 1:4; drawing: T. Bezeczky/Á. Vári).

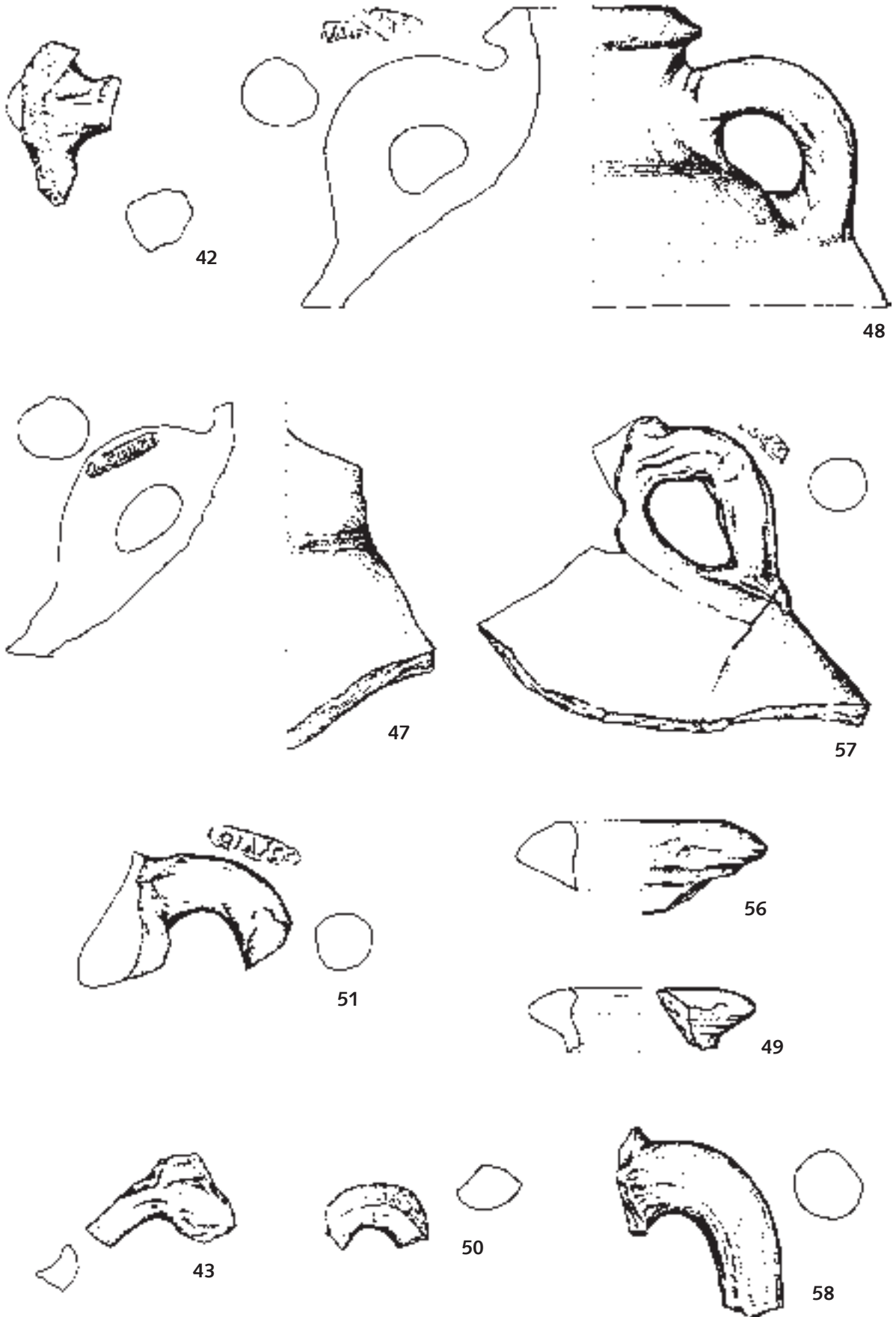


Cat. no. 26 (Knidian). Cat. no. 27–28 (Kapitän II). Cat. no. 29–31 (Gauloise 4). Cat. no. 32 (Gauloise?).  
Cat. no. 33 (Forlimpopoli) (scale 1:4; drawing: T. Bezczyk/Á. Vári).

PLATE 6



Cat. no. 34–41; amphorae Dressel 6B (scale 1:4; drawing: T. Bezczyk/Á. Vári).



Cat. no. 42-43; 47-51 and 56-58; amphorae Dressel 20 (scale 1:4; drawing: T. Bezeczký/Á. Vári).



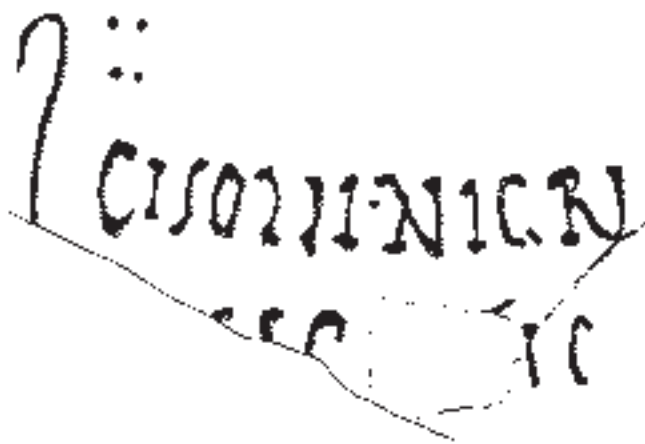
63



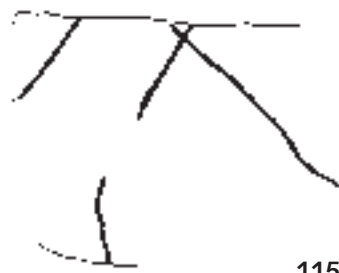
68



76



102



115

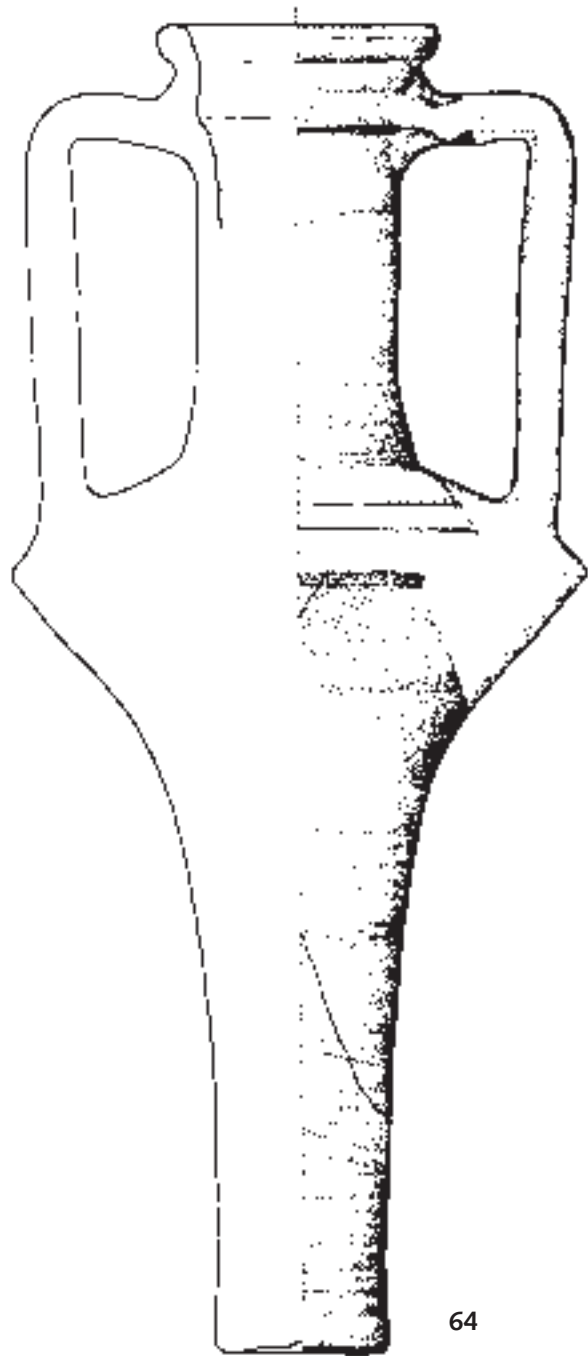


120

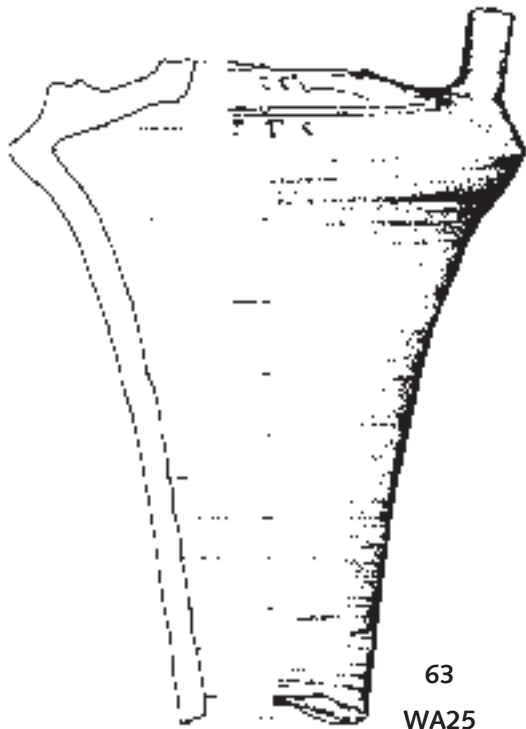




60  
WA24



64



63  
WA25



65  
WA26a

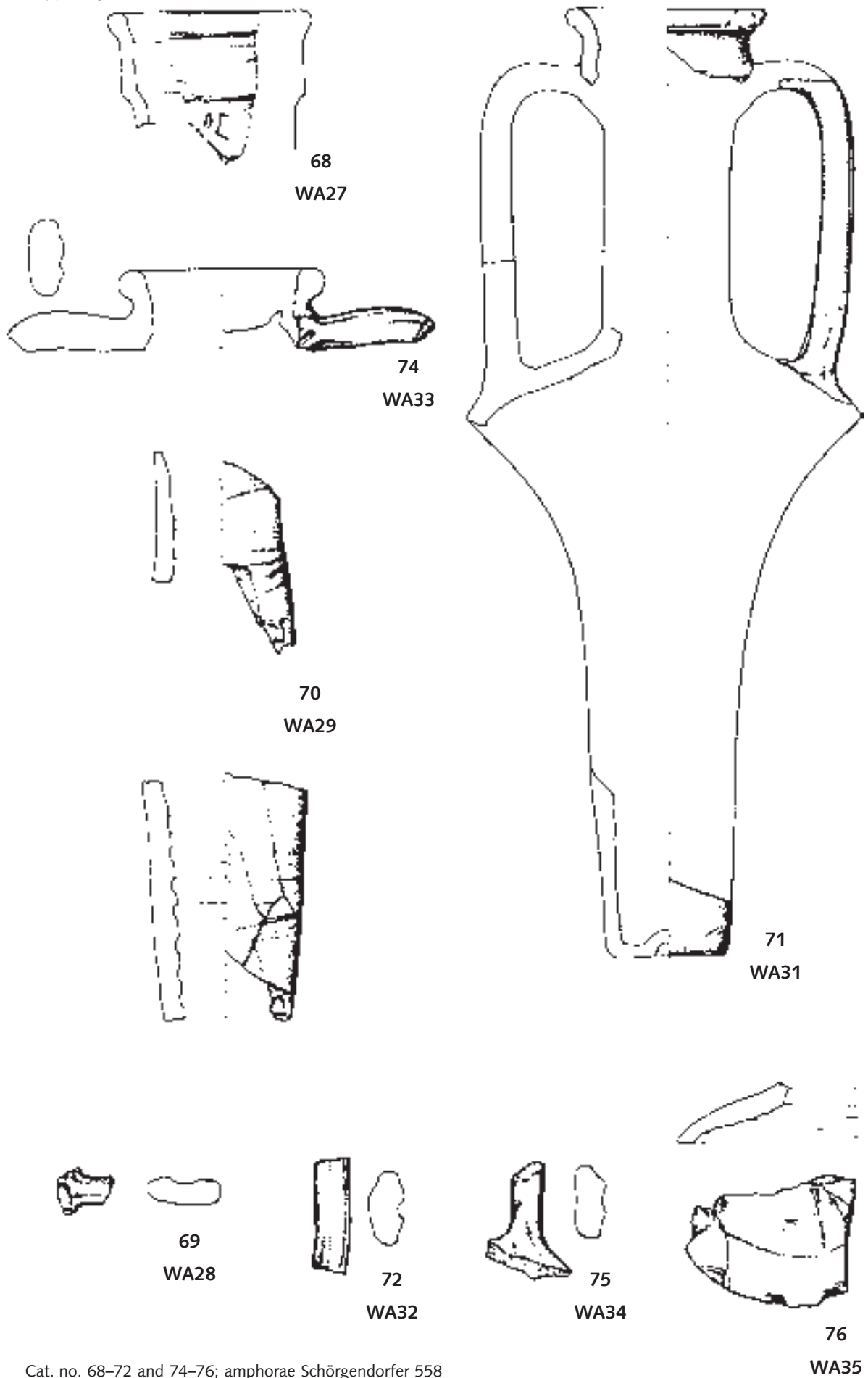


67  
WA30

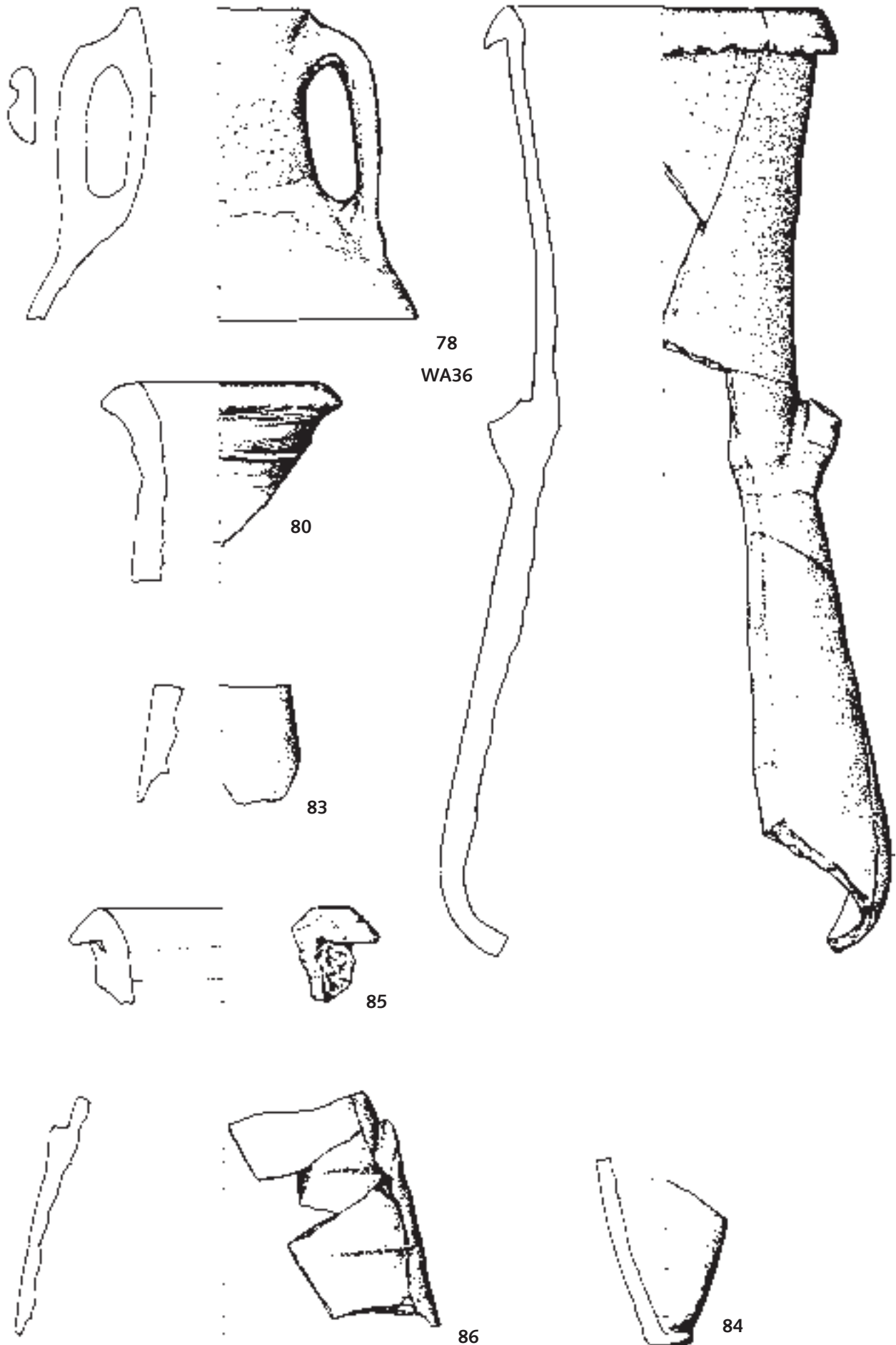


66  
WA26b

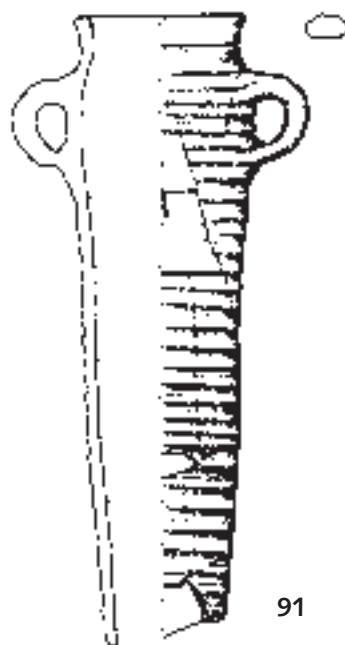
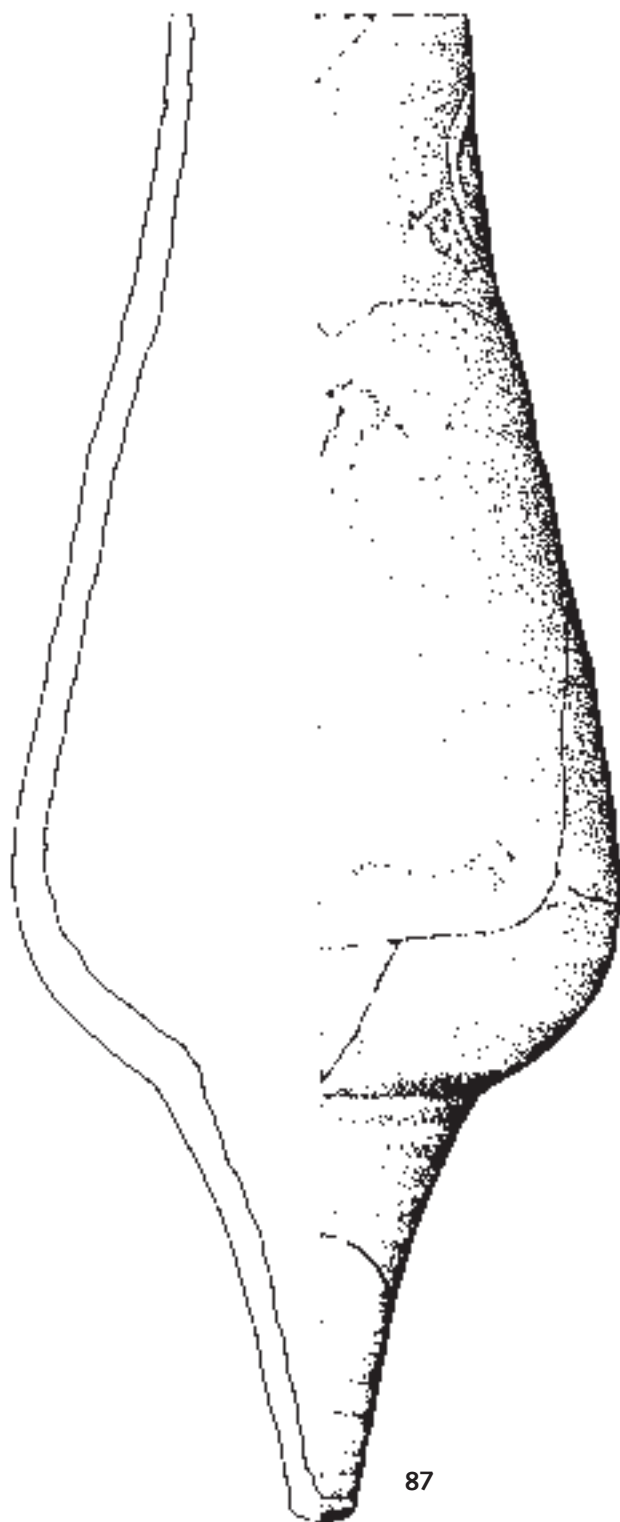
PLATE 10



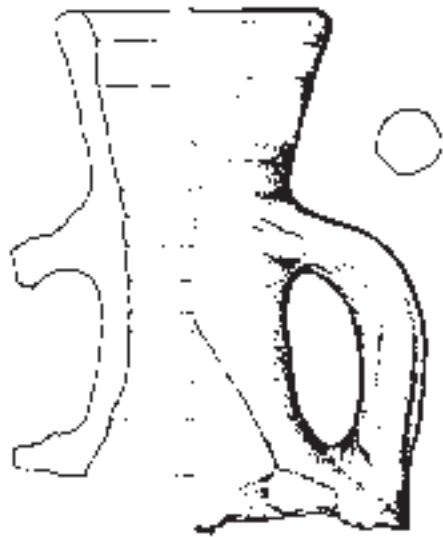
Cat. no. 68–72 and 74–76; amphorae Schörgendorfer 558  
(scale 1:4; drawing: T. Bezecsky/Á. Vári).



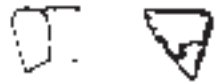
Cat. no. 78 (Dressel 7-11). Cat. no. 80 and 83 (Beltrán I). Cat. no. 84-86 (Pélichet 46/Beltrán II A)  
(scale 1:4; drawing: T. Bezaczy/Á. Vári).



Cat. no. 87–89 (Pélichet 46/Beltrán II A). Cat. no. 90 (Beltrán II B). Cat. no. 91 (Camulodunum 189)  
(scale 1:4; drawing: T. Bezeczky/Á. Vári).



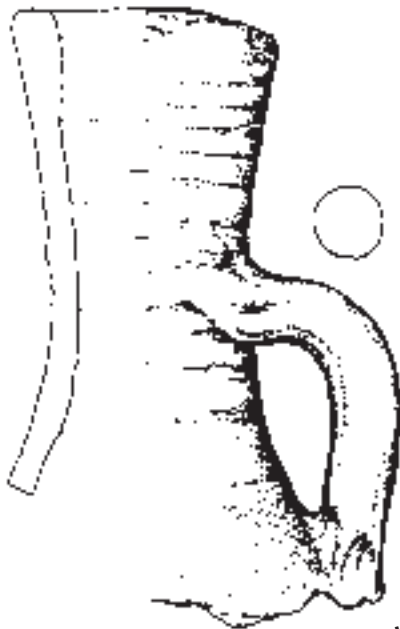
92  
WA40



95  
WA42



96  
WA43



93  
WA39



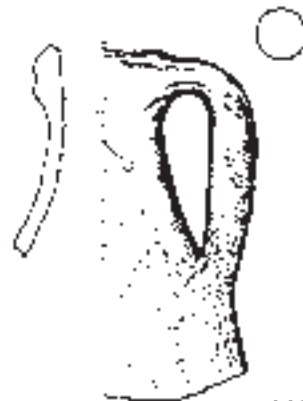
97  
WA44



98  
WA45



94  
WA41



113



100



102



101



104



107  
WA50

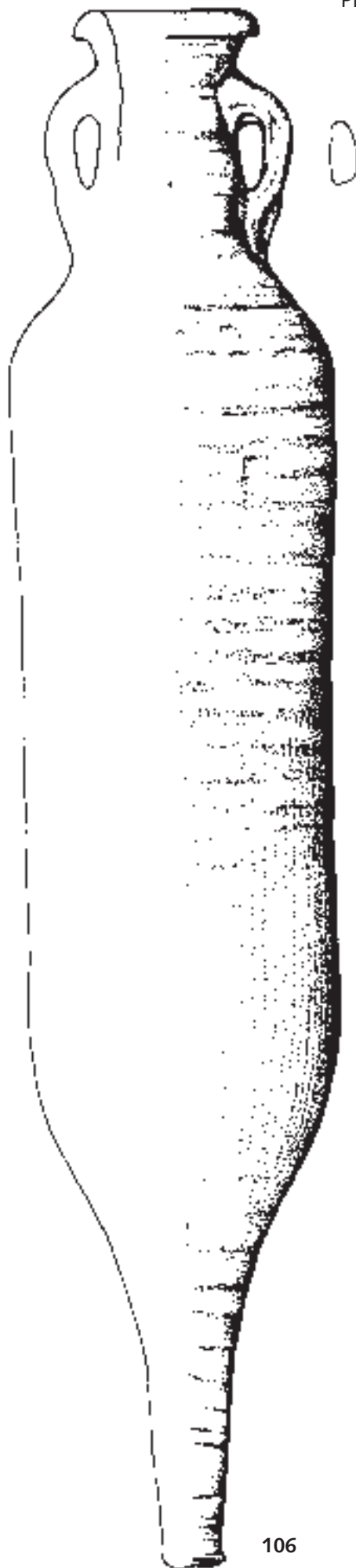


103

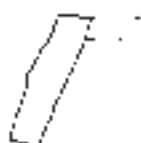
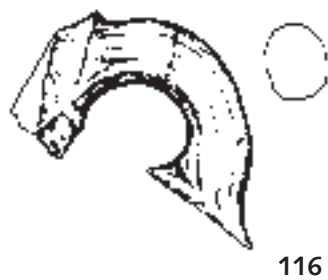
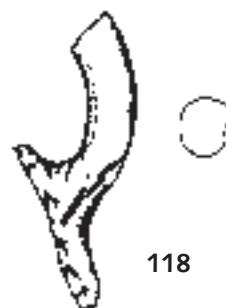
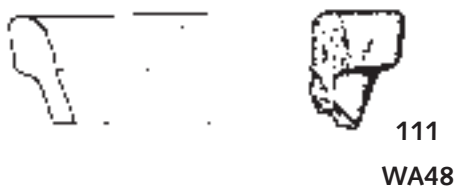


109  
WA23

Cat. no. 100–103 (Aquincum 78). Cat. no. 104 (Bónis XXXI/5). Cat. no. 107. Cat. no. 109 (Schörgendorfer 558) (scale 1:4; drawing: T. Bezecsky/Á. Vári).

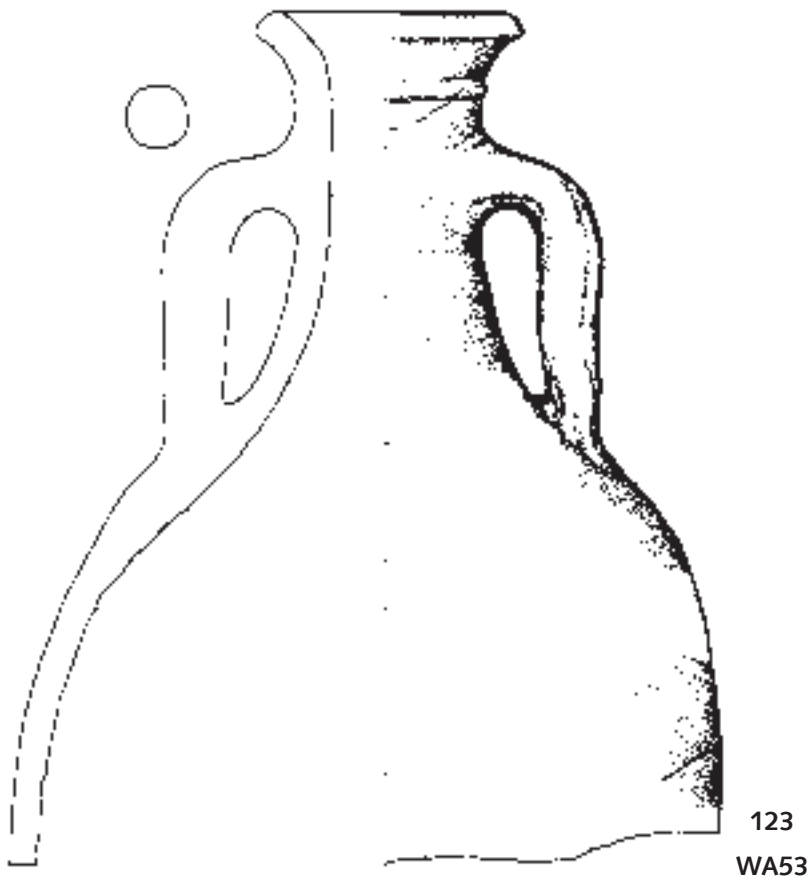
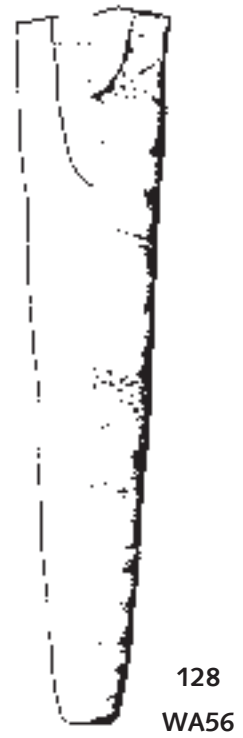
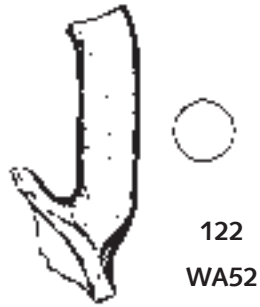


Cat. no. 105 and 106; "Spatheion"  
(scale 1:4; drawing: T. Bezeczky/Á. Vári).

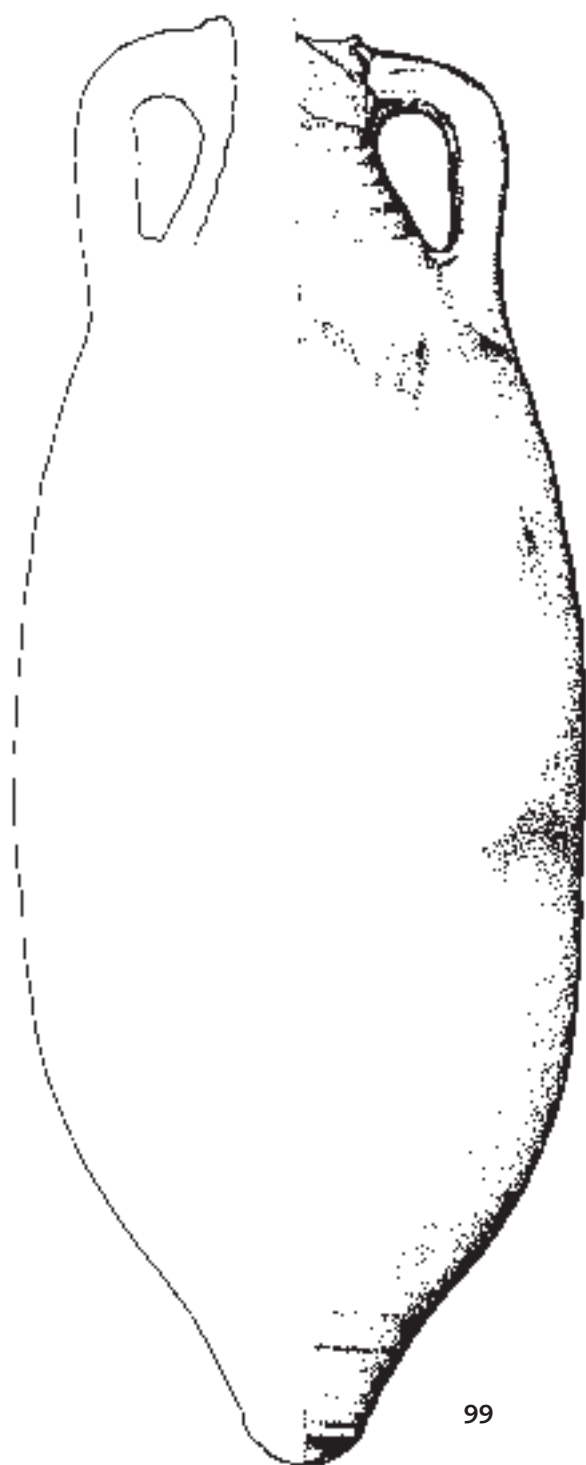


120  
WA51

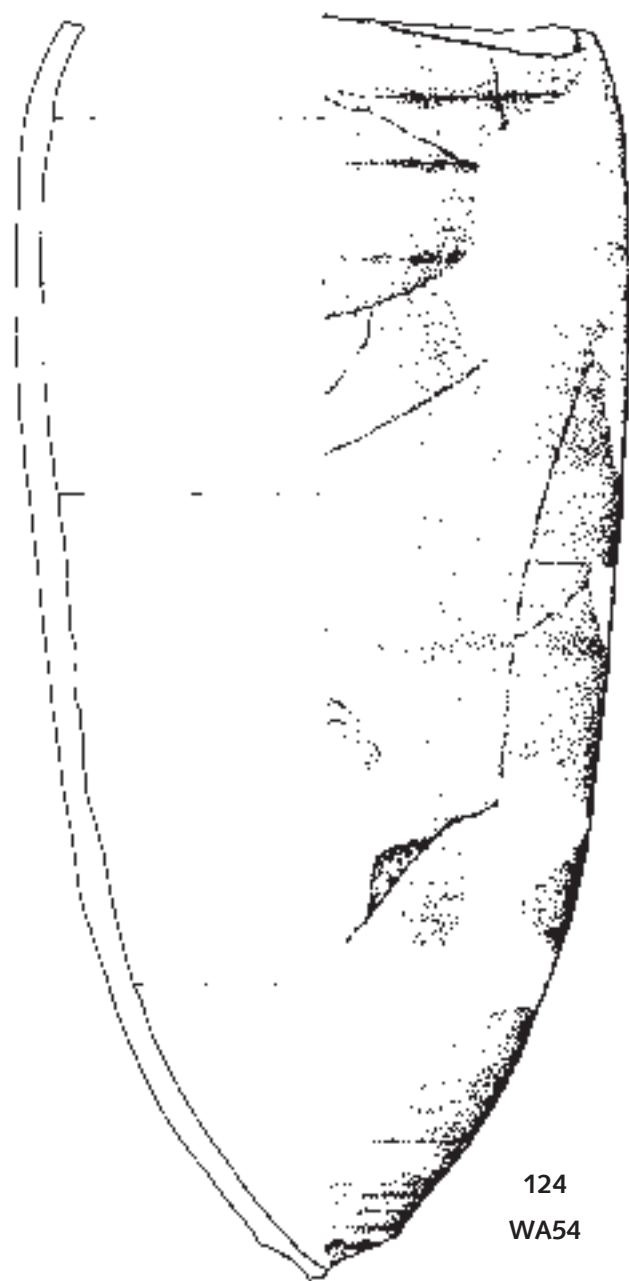




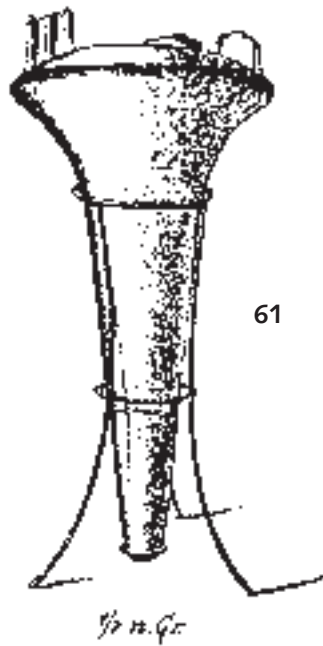
Cat. no. 121–123, 129. Cat. no. 125 and 128 (Rhodian type amphorae)  
(scale 1:4; drawing: T. Bezeczky/Á. Vári).



99



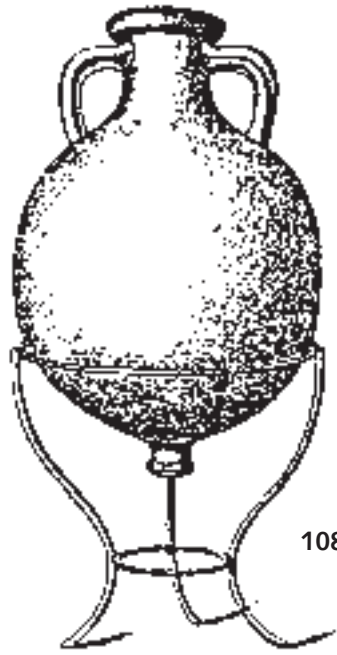
124  
WA54



61

*1/2 m. Gr.*

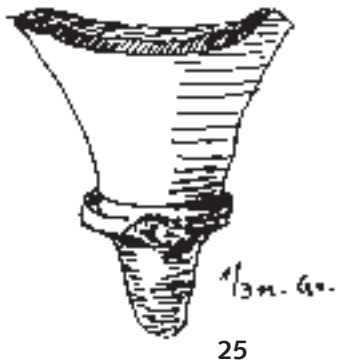
Fig. 311  
Diota (Hauzenmarkt n. 7 bei S)



108

*1/2 m. Gr.*

Fig. 337 Diota mit zapfen-  
förmigem Fuß (Freiung n 7)



*1/3 m. Gr.*

25

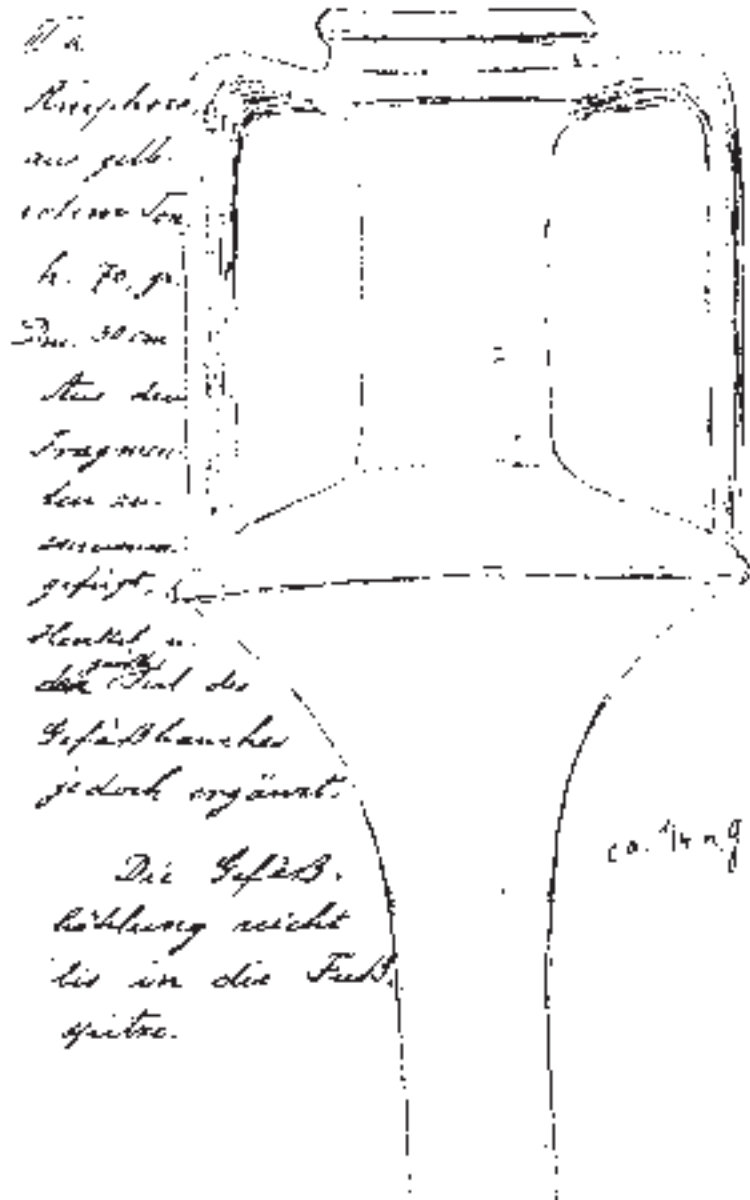
*a. gr. 2. mit v. Sinterkessel  
echt.  
h. 2.5, Öffnung*



*1/2 m. Gr.*

79

Cat. no. 61 (Schörgendorfer 558, see KENNER 1905, Fig. 311). Cat. no. 25 (Knidian, see HMW, Inventarbuch alt 2184. Cat. no. 108 (see KENNER 1905, Fig. 337). Cat. no. 79 (Dressel 8/Beltrán I, see HMW, Inventarbuch alt 198).





60



73

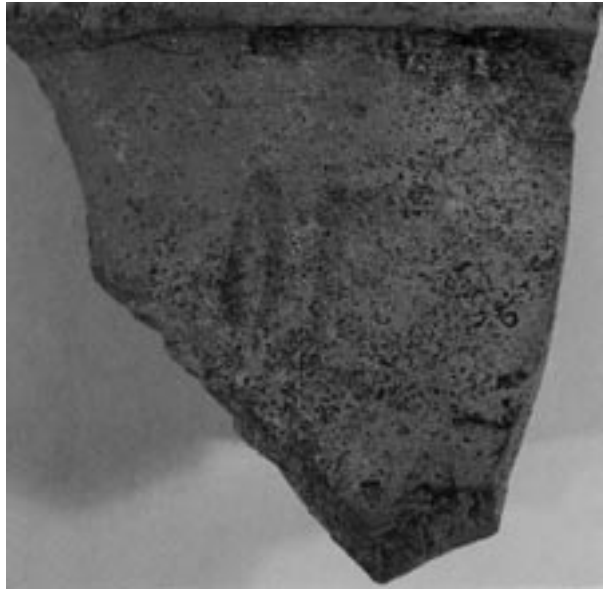


73

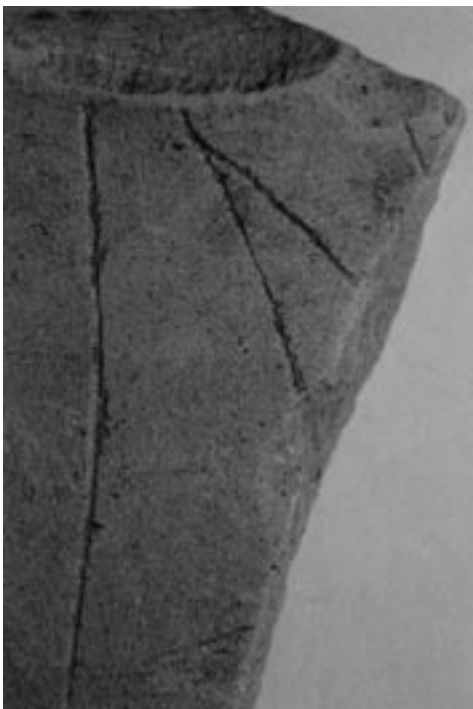
Schörgendorfer 558 Cat. no. 73 (photo: ÖAI) and Dressel 2-4  
Cat. no. 1 amphorae (photo: HMW)



60



68



76



63

*Tituli picti* on the amphorae Cat. no. 60, 68, 76 and 63 (photo: T. Bezczyk).

