

Tafelteil



Abb. 1 Ansichten von Çintepe bei Neochōrion / Yeniköy



Abb. 2 Ansichten vom Raum Ganos / Gaziköy in Richtung Nordosten



Abb. 3 Ganos / Gaziköy, Spolienbrunnen



Abb. 4 Blick vom Kartalkaya nordwestlich von Eudēmion / Uçmakedere Richtung Osten



Abb. 5 Das Ganosgebirge bei H. Euthymios / Naip



Abb. 6 Die sogenannte Naip Kalesi 5 km südlich des Dorfes



Abb. 7 Neochōrion / Yeniköy, Flußtal zur Propontis



Abb. 8 Neochōrion / Yeniköy, Architekturfragment



Abb. 9
Myriophyton / Mürefte, Fundstücke aus der Umgebung



Abb. 10 Myriophyton / Mürefte, Fundstücke aus der Umgebung



Abb. 11 Herakleitsa / Eriklice, Architekturfragment



Abb. 12 Peristasis / Şarköy, Architekturfragment



Abb. 13
Sterna / Tepeköy, Kirche



Abb. 14 Sterna / Tepeköy, Kapitell

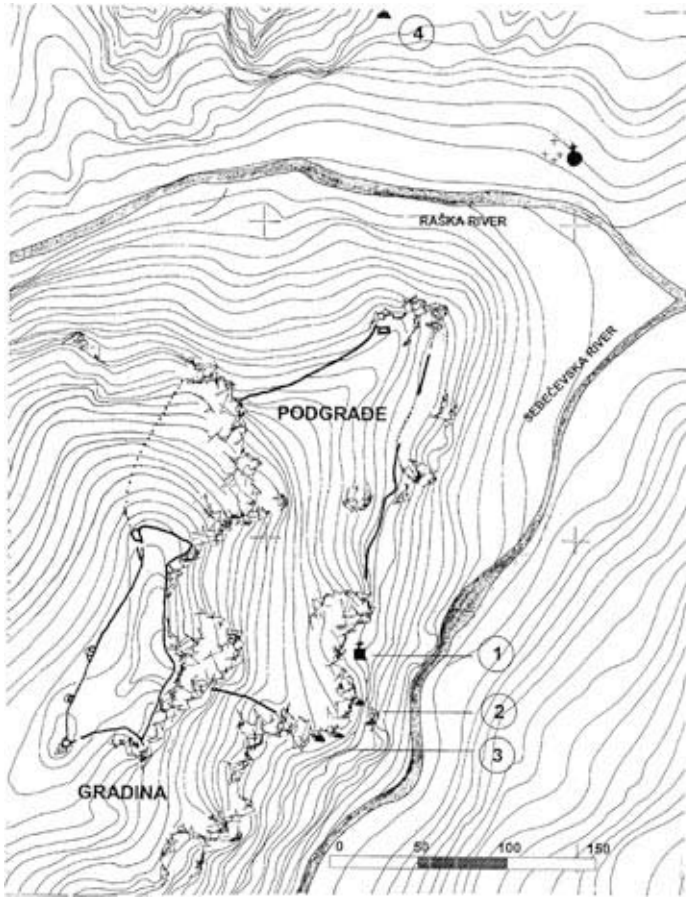


Fig. 1
Ras Fortress with the location of the cave complex,
south-western Serbia



Fig. 2
Ras, Monastery of Archangel Michael



Fig. 3 Ras, Monastery of Archangel Michael

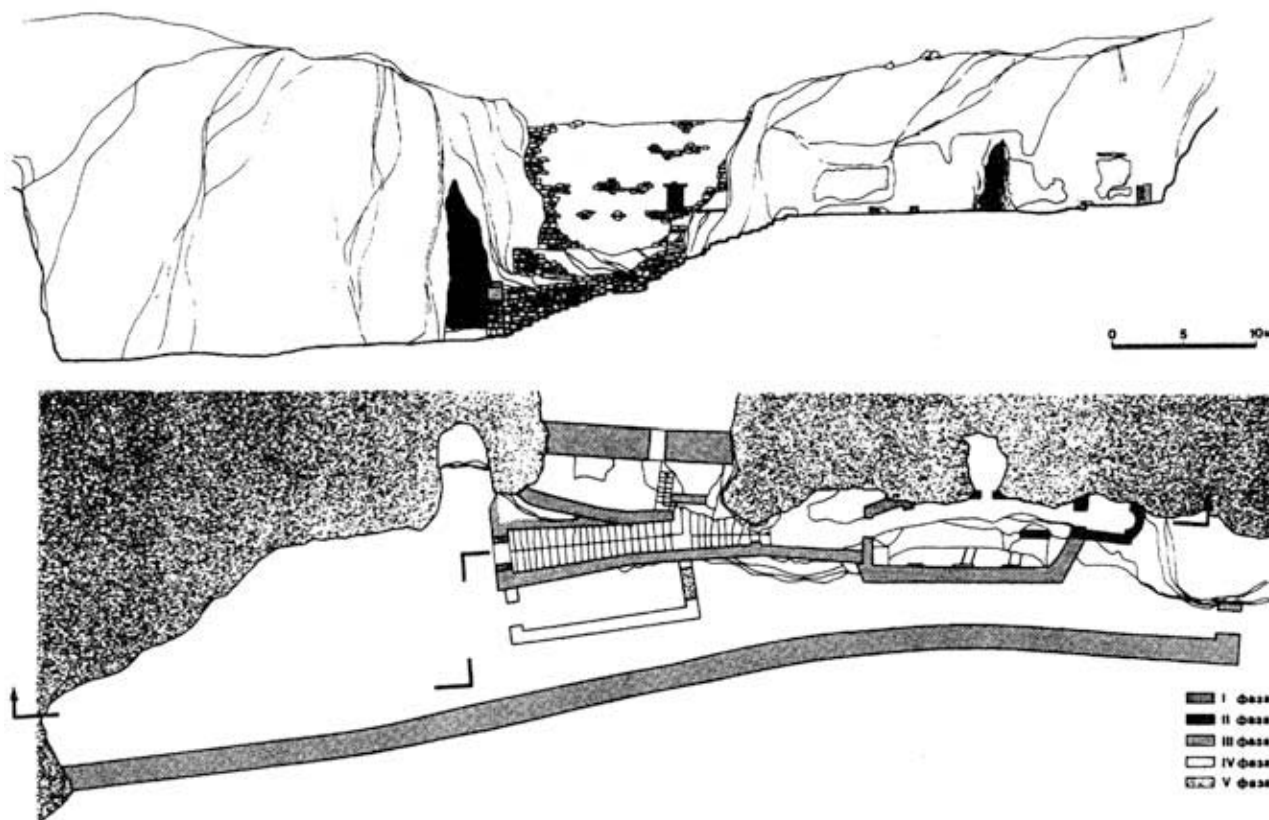


Fig. 4 Monastery of St Peter of Koriša (Metochia), plan and section of the complex



Fig. 5 Monastery of St Peter of Koriša

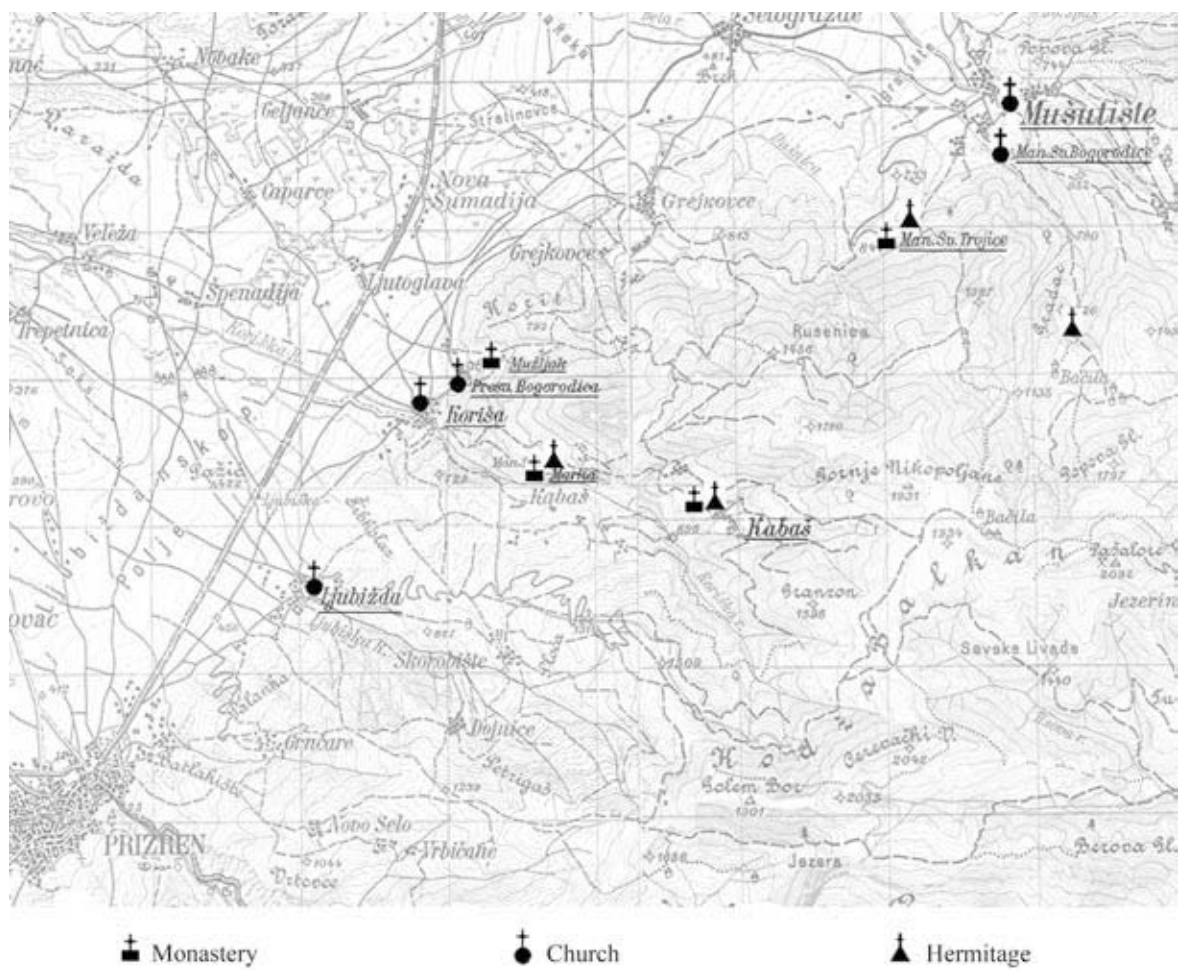


Fig. 6 Monasteries, churches and hermitages in the environs of Prizren (Metochia)



Fig. 7/1 Koriša, cave church of the Virgin

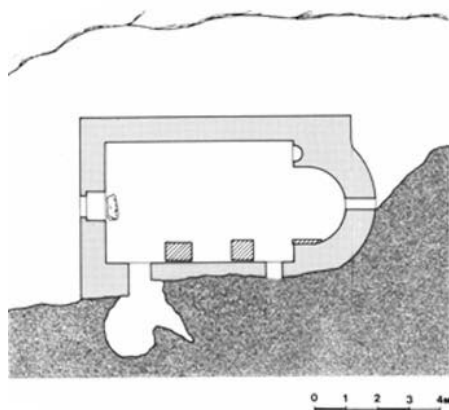


Fig. 7/2 Koriša, cave church of the Virgin



Fig. 8 Koriša, Monastery of St Mark



Fig. 9 Rusenica (Metochia), cave church

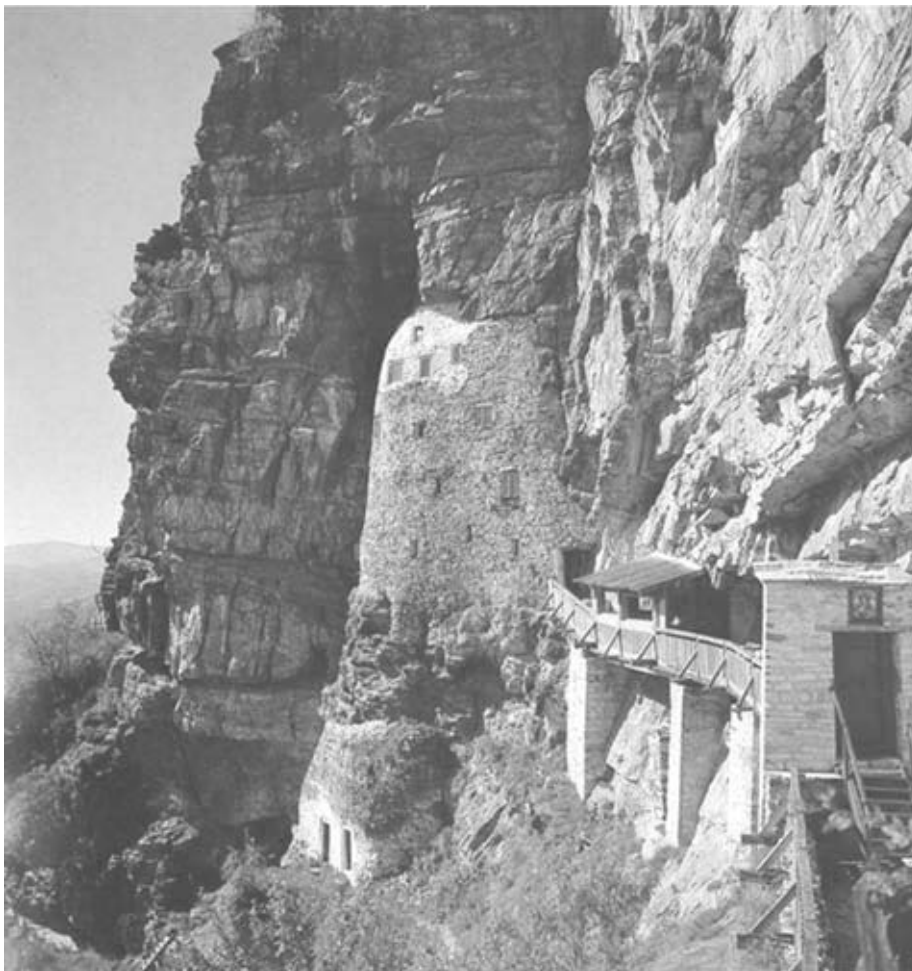


Fig. 10 Studenica, Hermitage of St Sava, general view

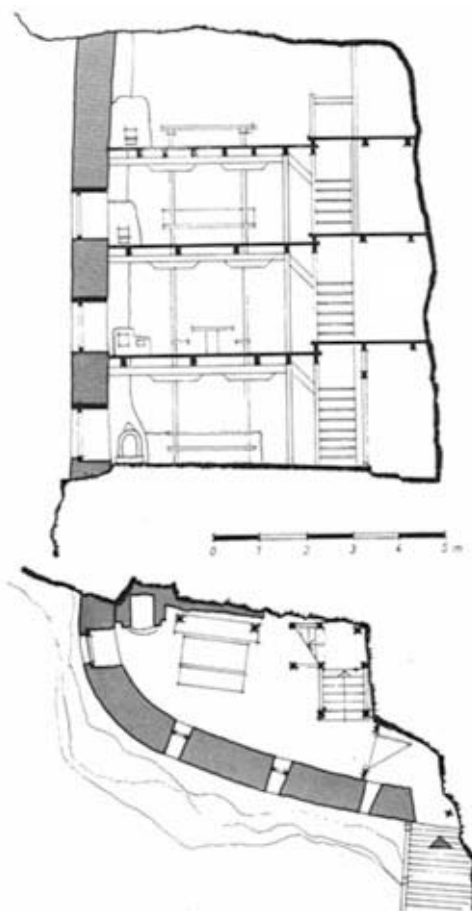


Fig. 11
Studenica, Hermitage of St Sava,
groundplan and cross-section



Fig. 12 Mileševa, remains of the cave complex



Fig. 13
Bjeličkovića (western Serbia), Hermitage of Monastery Banja near
Priboj



Fig. 14
Monastery of Dečani, so-called Hermitage of
St Stefan of Dečani



Fig. 15 Orlić, Hermitage of Žitin Monastery (western Serbia)



Fig. 16 Monastery of Krepičevac (eastern Serbia), wall-painting with a monk's hut

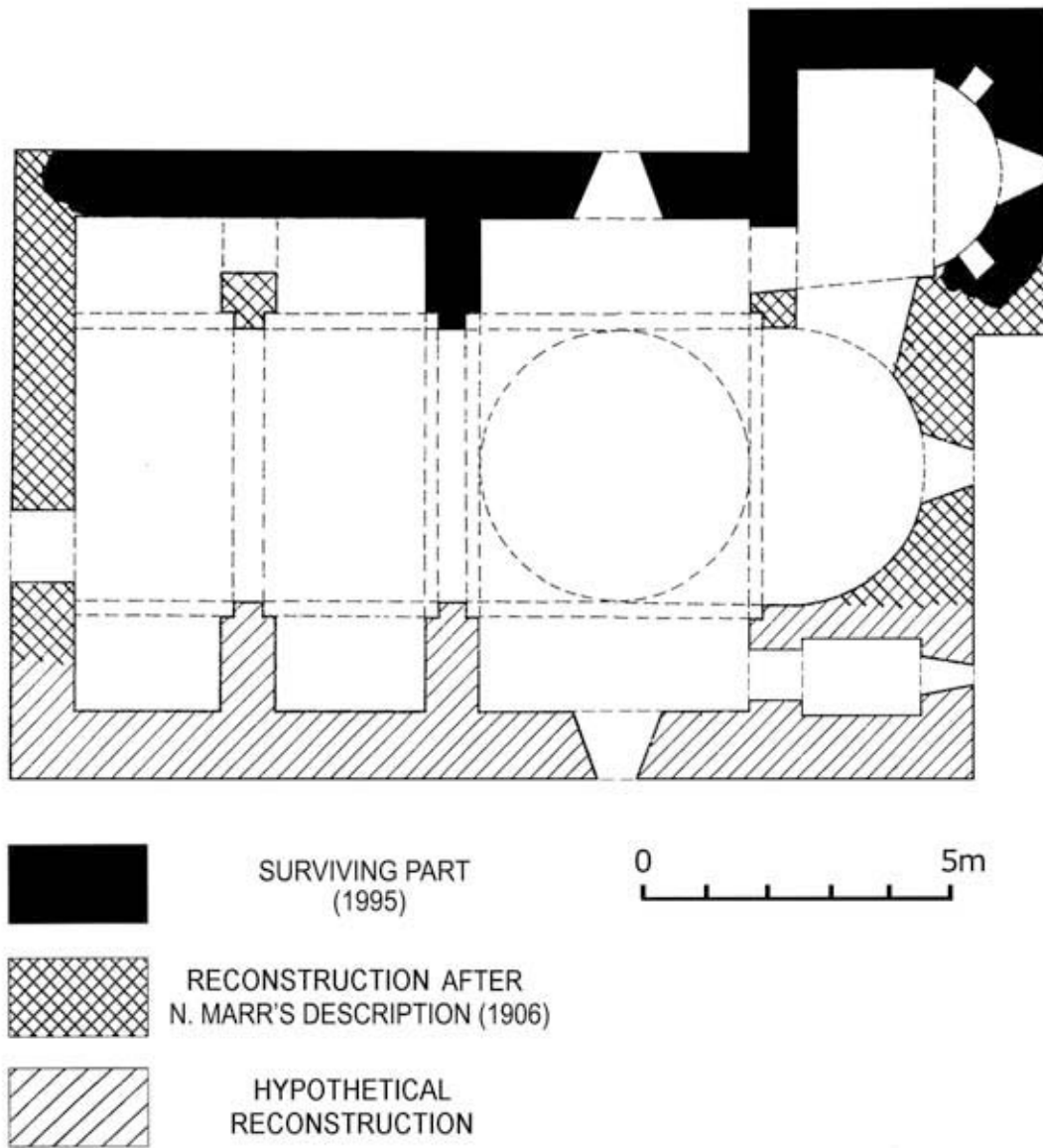


Fig. 1 Tsqarostavi. Church. Plan

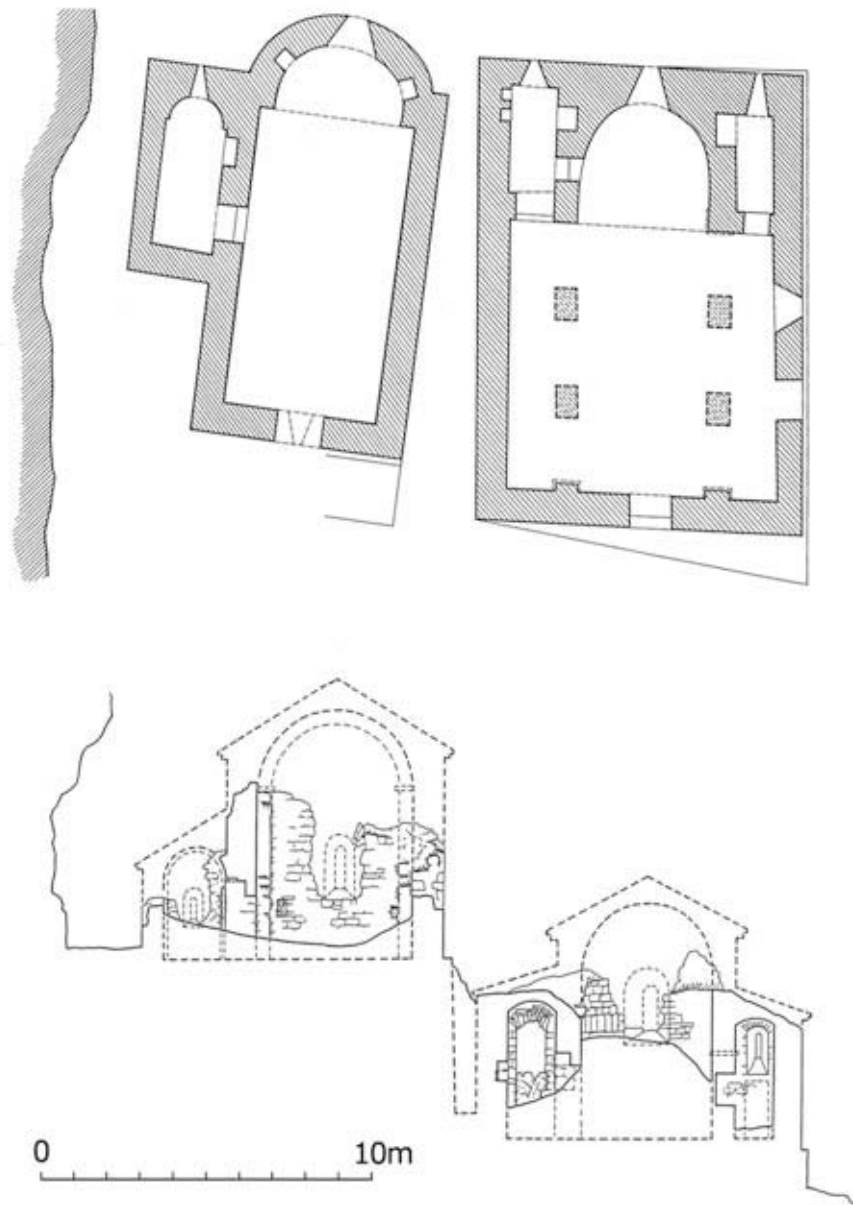


Fig. 2 Parekhi. Two churches. Plan and cross-section looking east

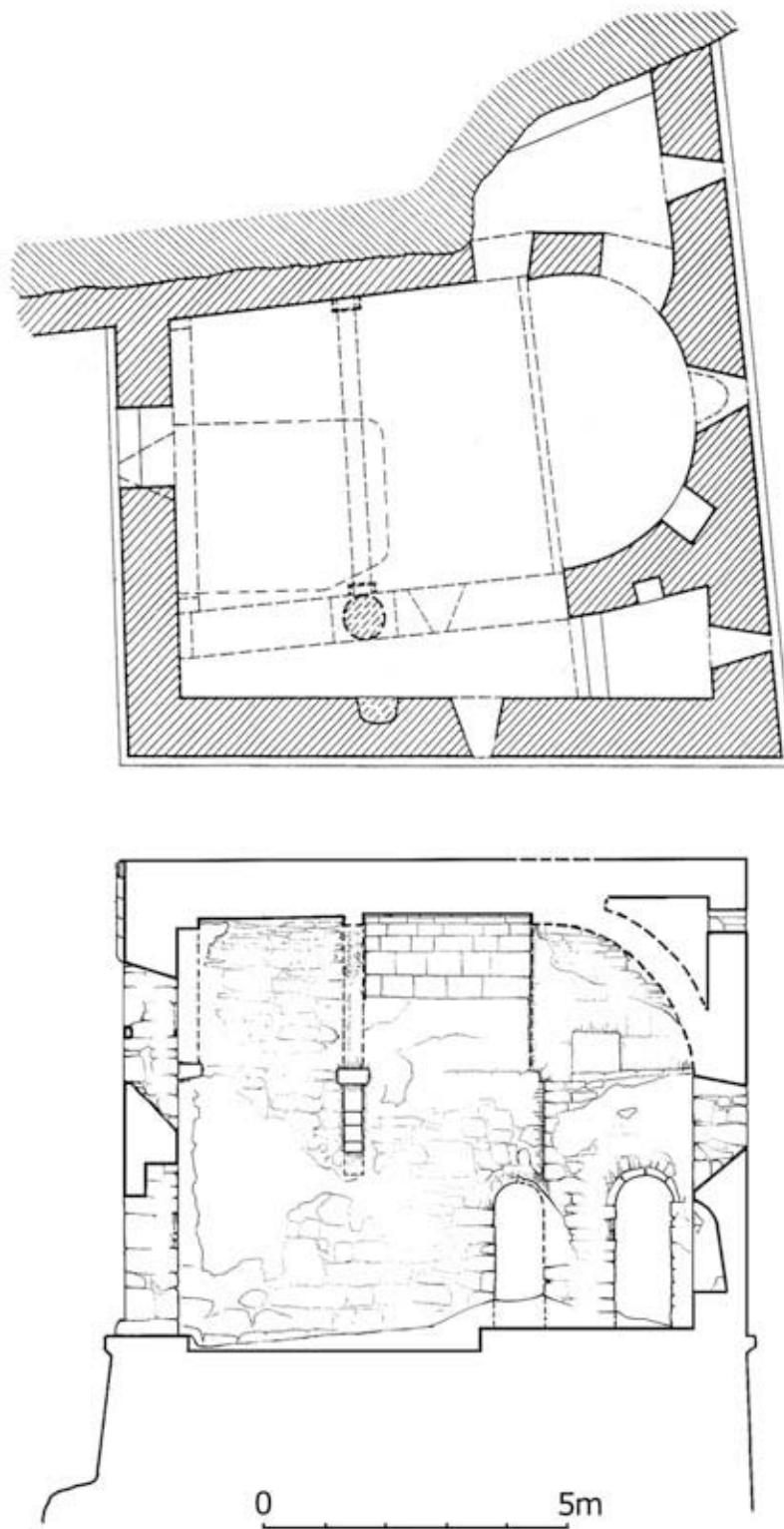


Fig. 3 Nuka-Saqdari. Plan and longitudinal section looking north

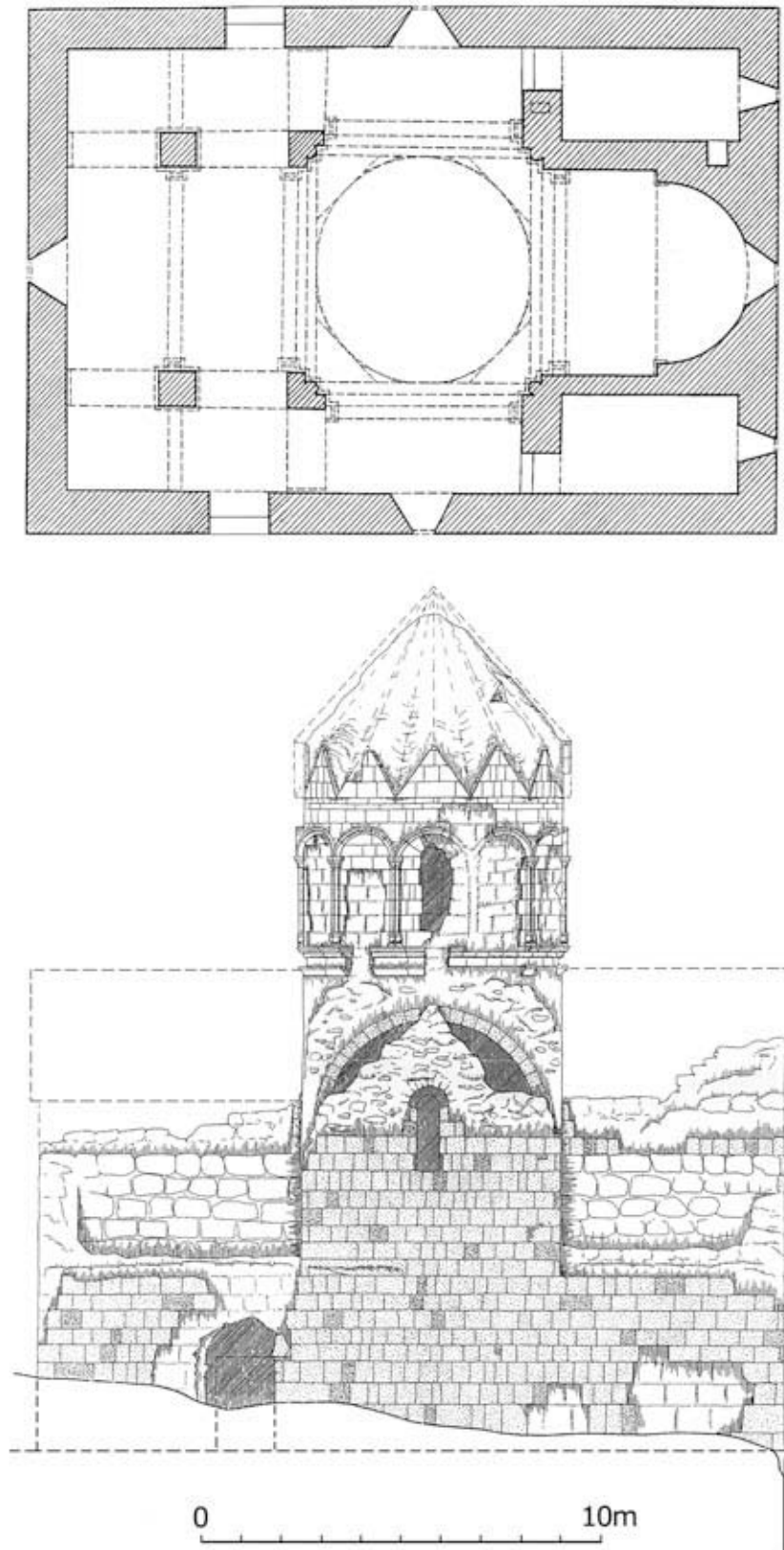


Fig. 4 Khandzta. Church. Plan and south façade

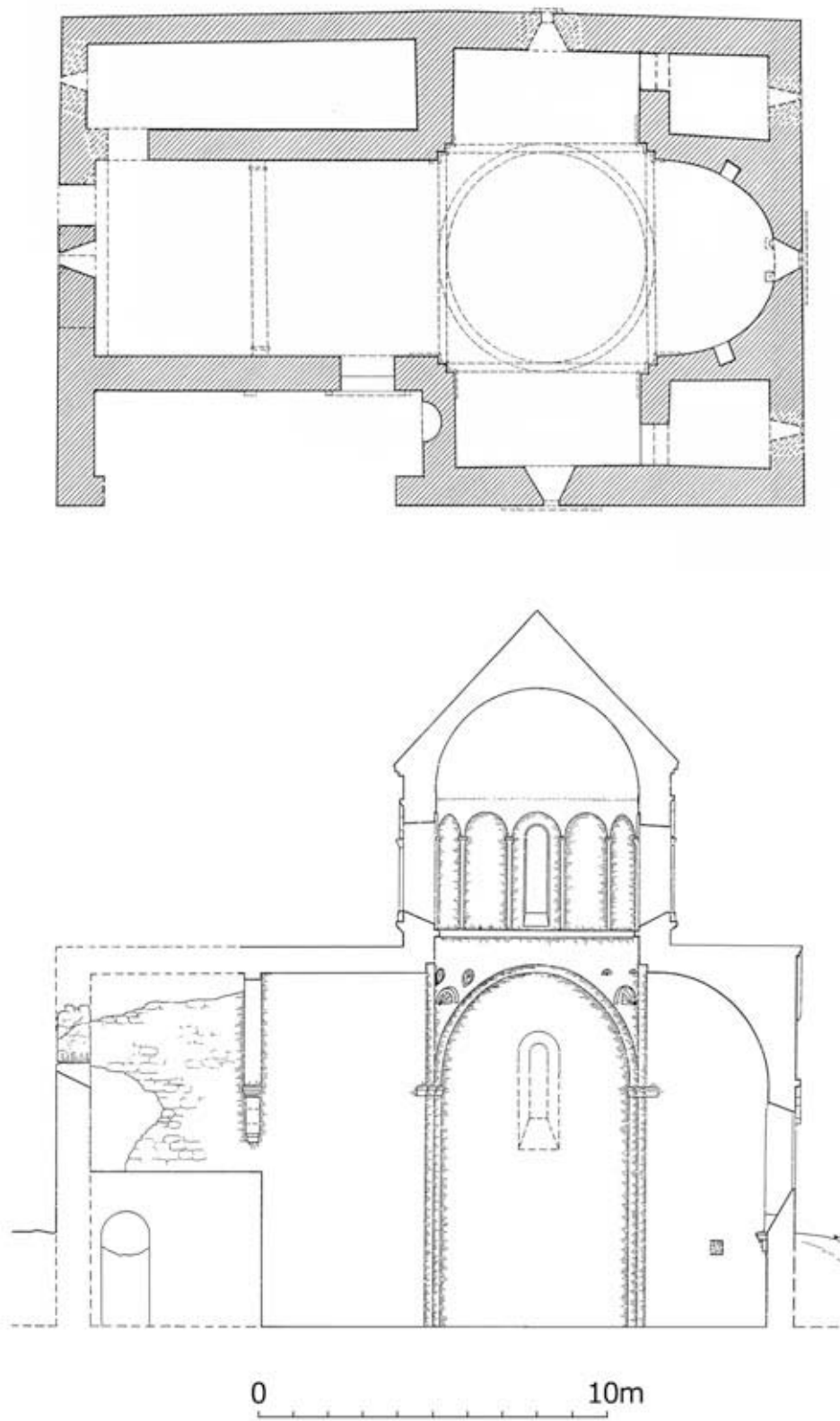


Fig. 5 Dolisqana. Church. Plan and longitudinal section looking north

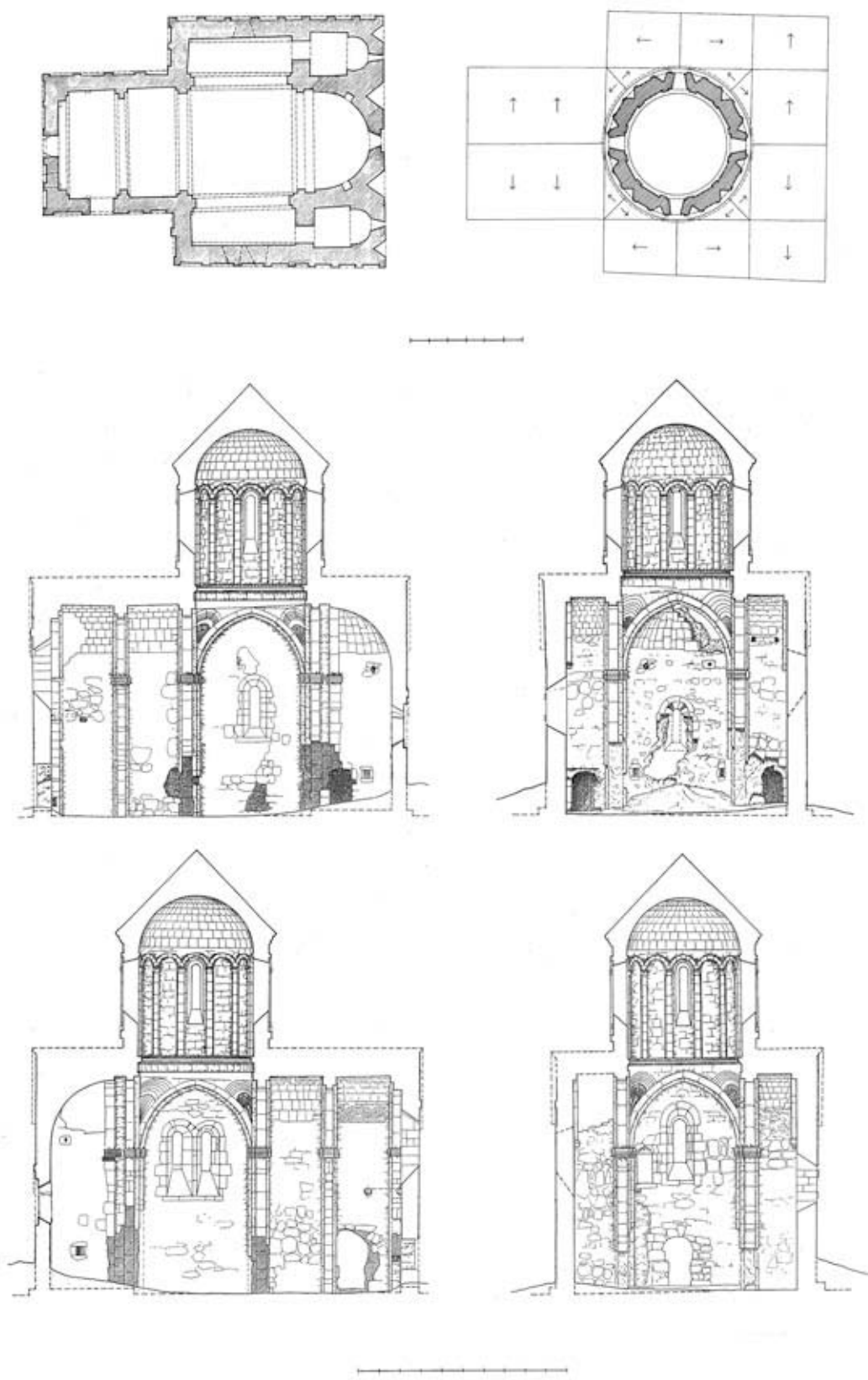


Fig. 6 Yeni Rabat (Shatberdi). Ground plan, roofing plan, and sections

