

BEILAGEN

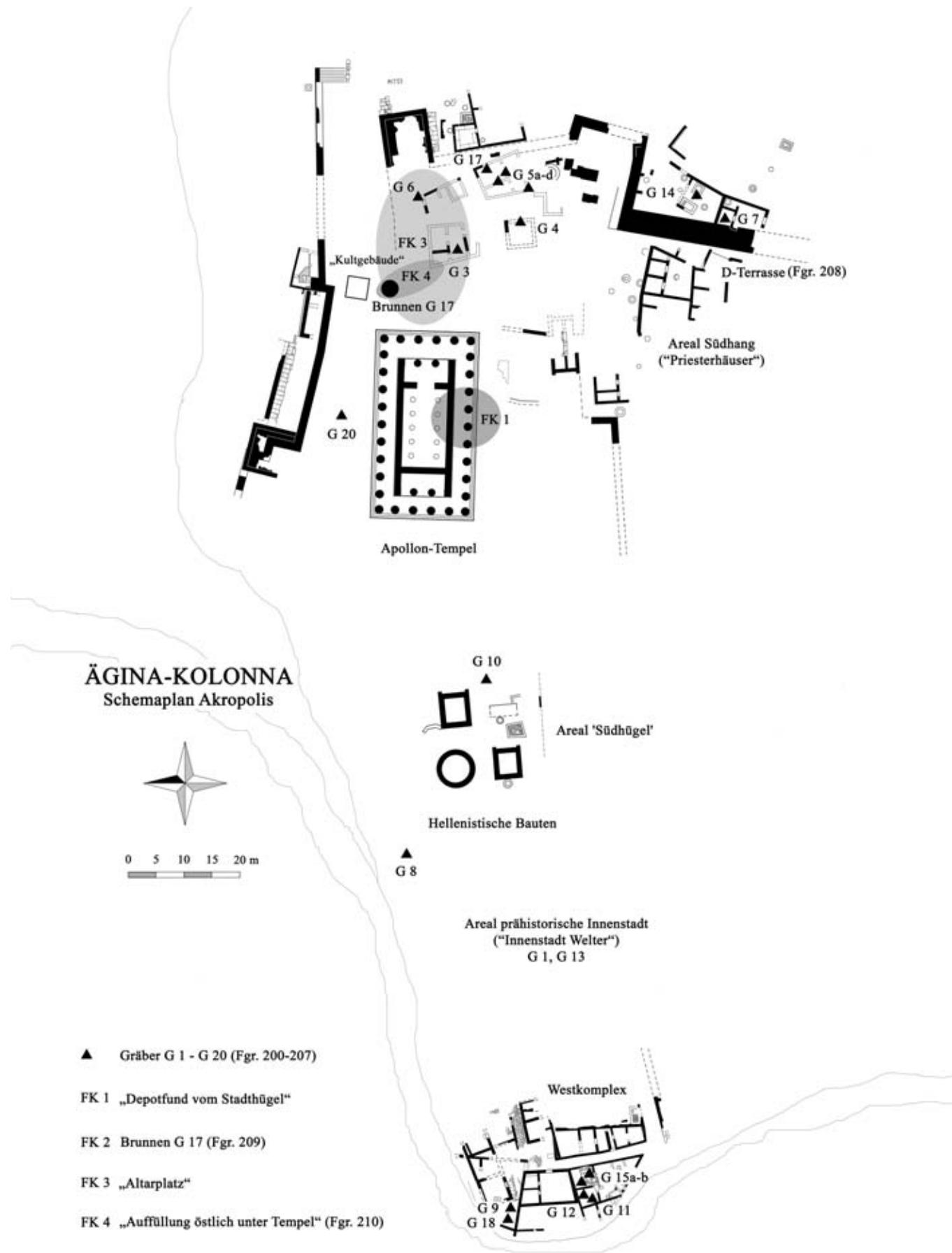
Abbildungs- und Photonachweis

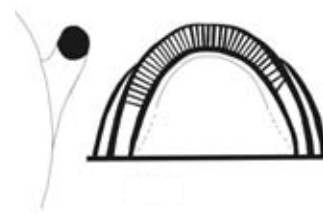
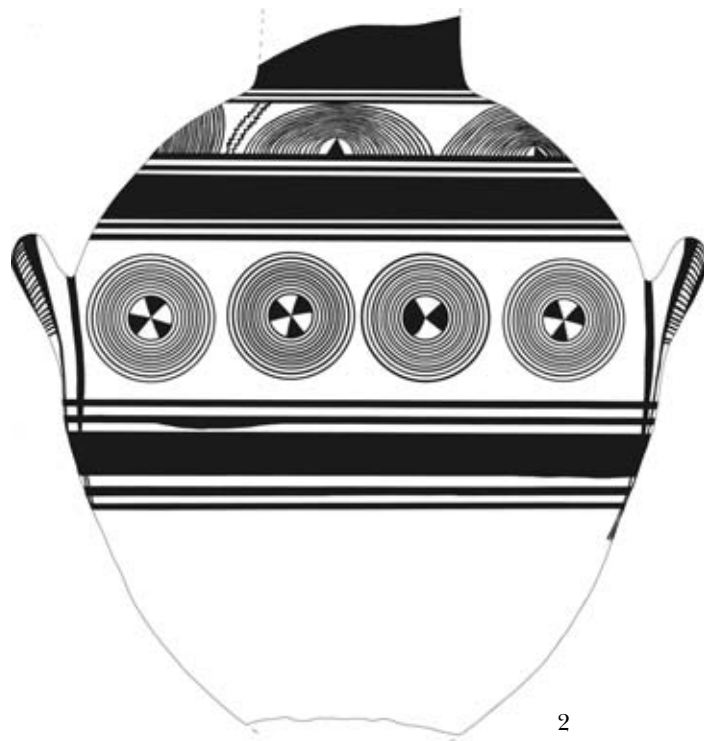
Beil.1, Plan von C. Reinholdt; alle übrigen Zeichnungen des Beilagentheiles wurden von M. Schwembacher sowohl manuell gefertigt als auch digital fertiggestellt.

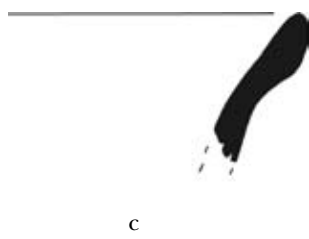
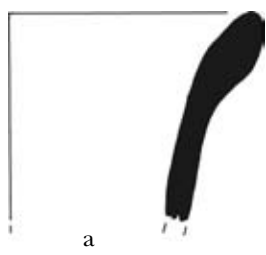
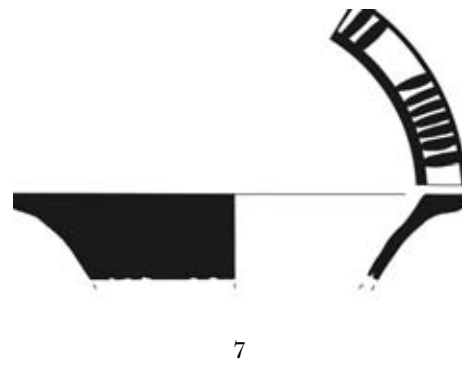
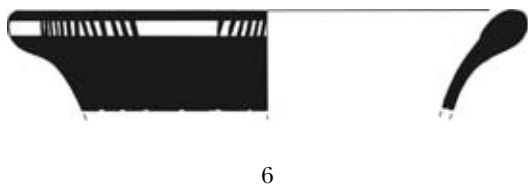
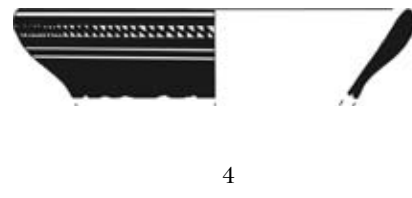
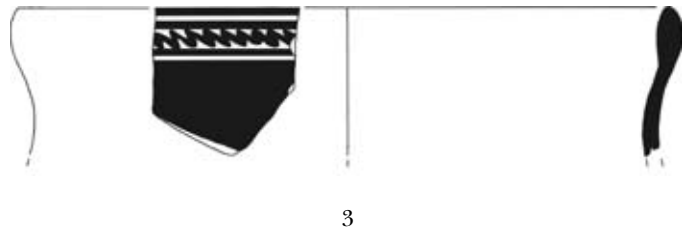
Tafelteil: 140 (Taf. 15), 434 (Taf. 39) = DAI Neg. Ägina 404; 141, 143 (Taf. 15), 206 (Taf. 20) = DAI Neg. Ägina 405; 202 (Taf. 19), 228 (Taf. 21) = DAI Neg. Ägina 393; 350 (Taf. 32), 407 (Taf. 36), 779 (Taf. 63) = DAI Neg. Ägina 400; 406 (Taf. 36) = DAI Neg. Ägina 399; 440 (Taf. 39) = DAI Neg. Ägina

408; 442 (Taf. 40) = DAI Neg. Ägina 415; 619 (Taf. 51), 641 (Taf. 53) = DAI Neg. Ägina 396; 649, 650 (Taf. 54) = DAI Neg. Ägina 395; 757, 758, 759, 760 (Taf. 62) = DAI Neg. Ägina 211; 830 (Taf. 67), 858 (Taf. 68) = DAI Neg. Ägina 394; 842, 843, 844 (Taf. 68) = DAI Neg. Ägina 212; 906 (Taf. 73) = DAI Neg. Ägina 402; 907, 908, 910, 911 (Taf. 72), 915, 917 (Taf. 74), 922 (Taf. 75) = DAI Neg. Ägina 403.

Alle übrigen Photos stammen von M. Del-Negro, Salzburg.

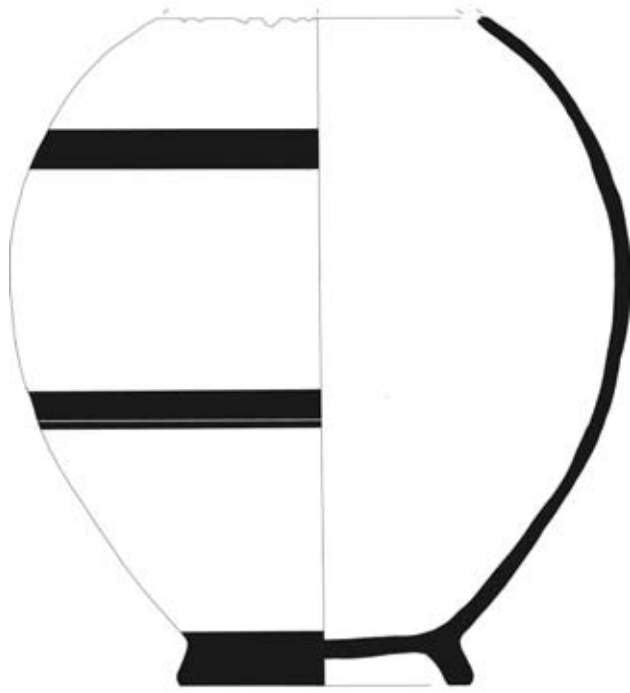




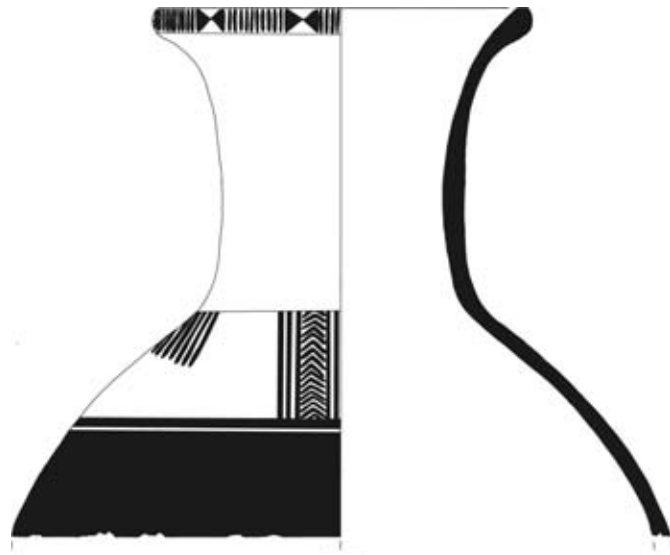


5 (Sammelnummer)

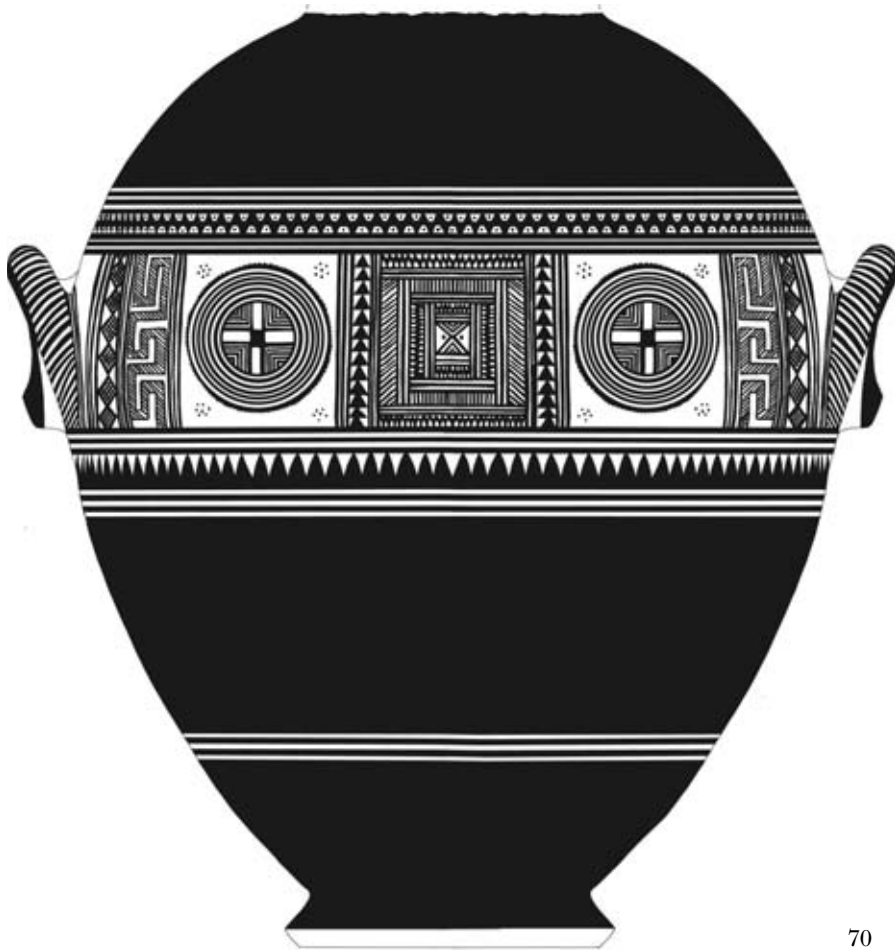




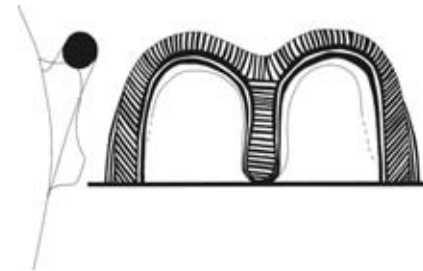
57

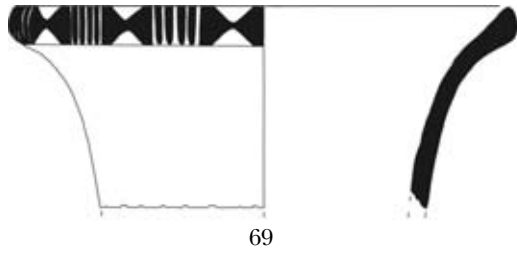


68



70

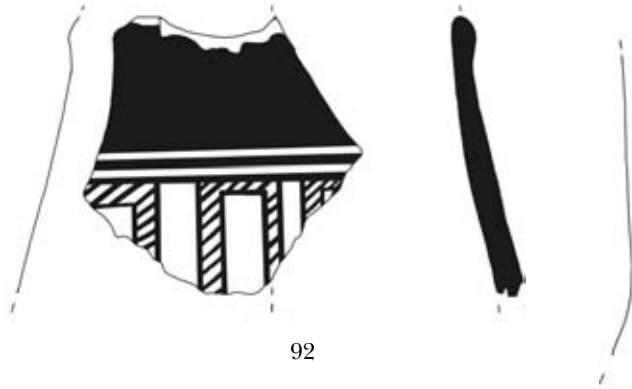




69



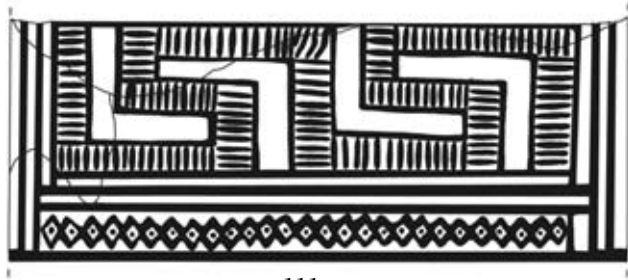
71



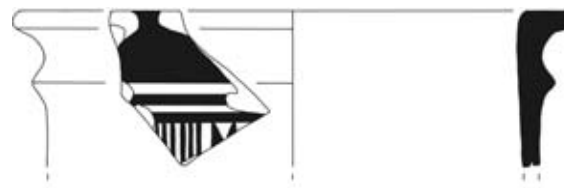
92



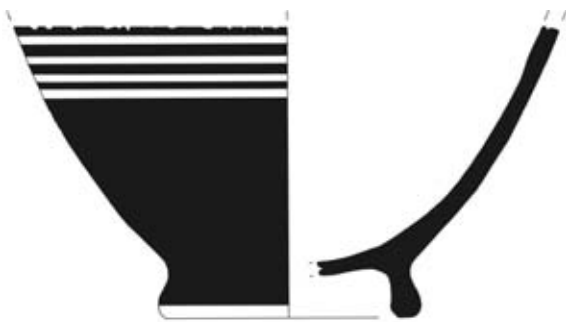
83



111



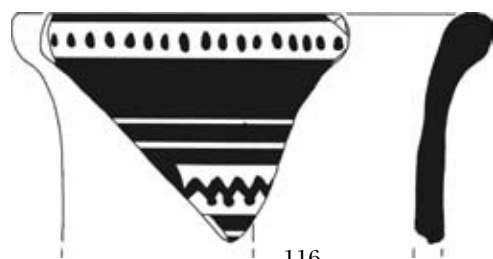
105



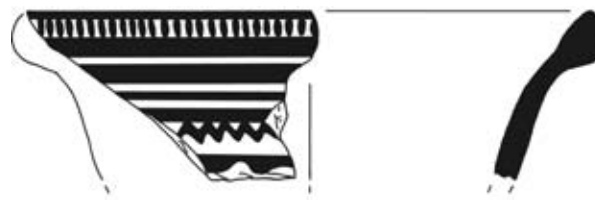
97



115



116



117



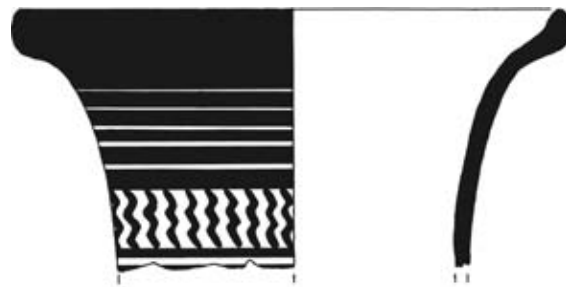
124



128



129



156



157



163



169



139



171



177



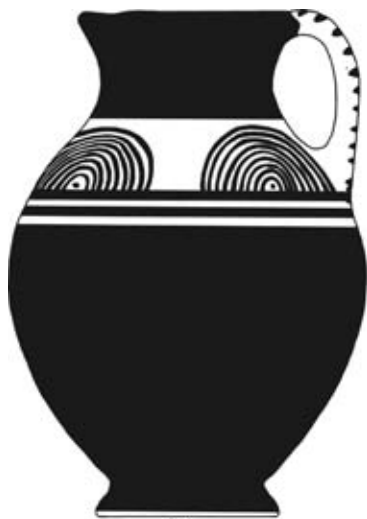
176



178



179

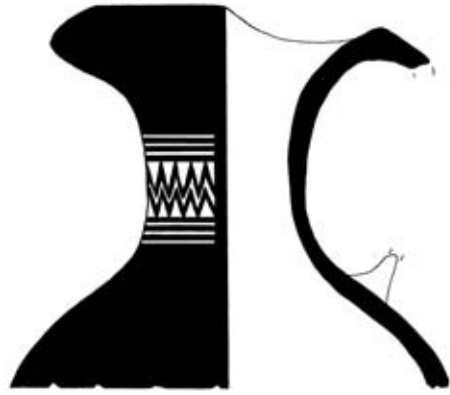


180

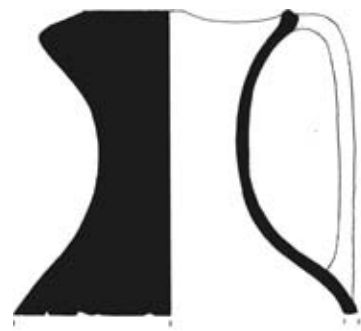


181





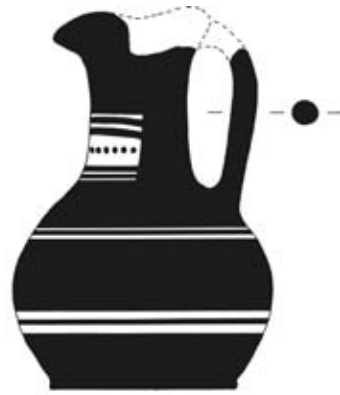
194



195



201



202



203



224



226



230



228



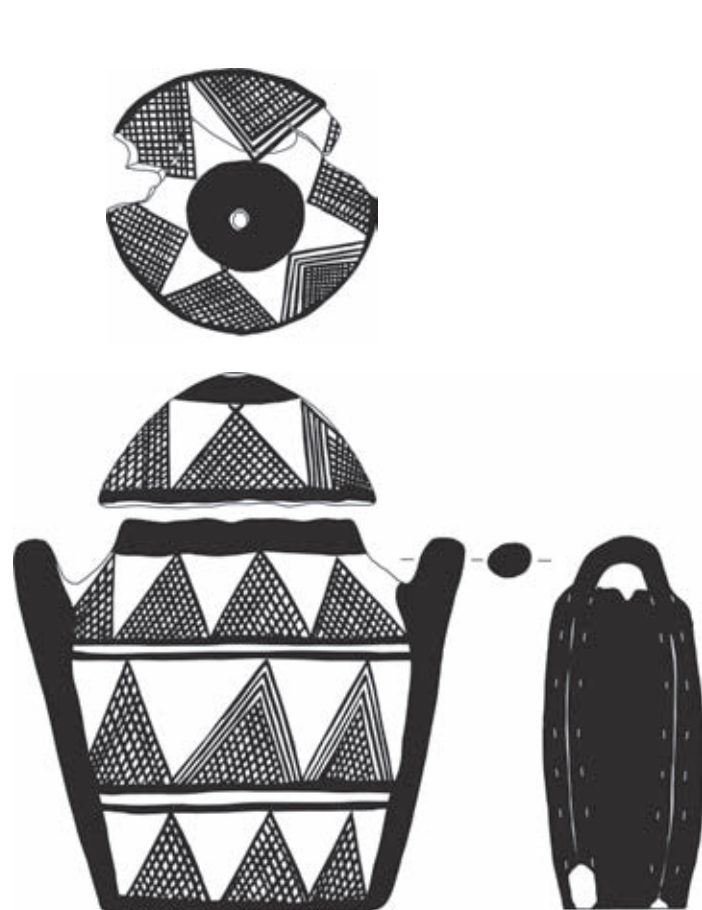
236



237



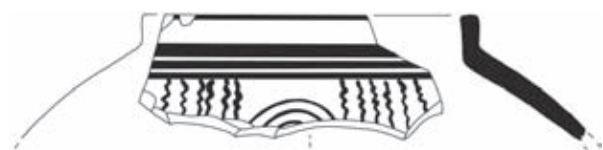
238



254



257



255



259



261



260

200

Beilage 10



262



263



264



265



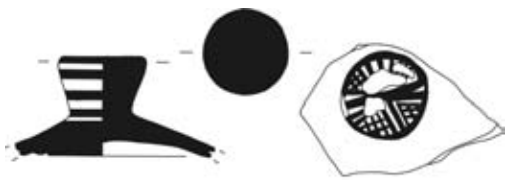
266



268



274



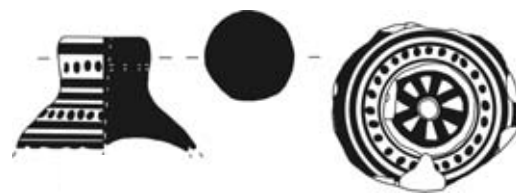
275



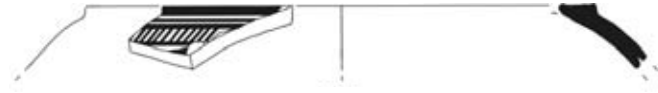
276



280



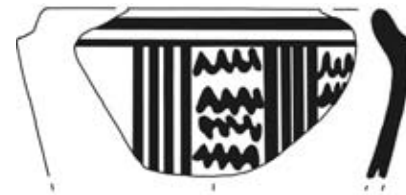
281



285



286



288



270



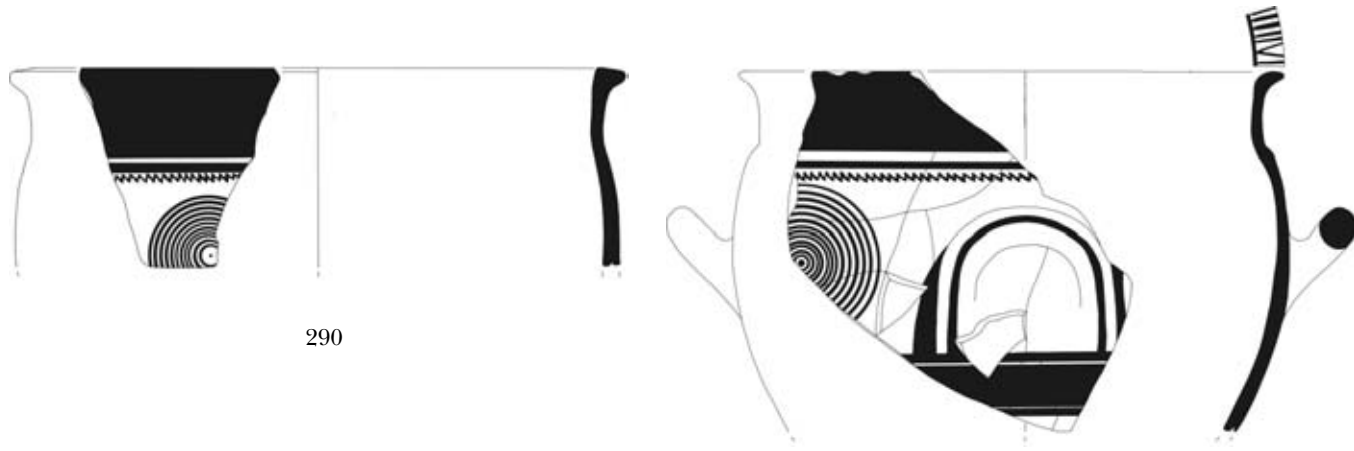
287



272

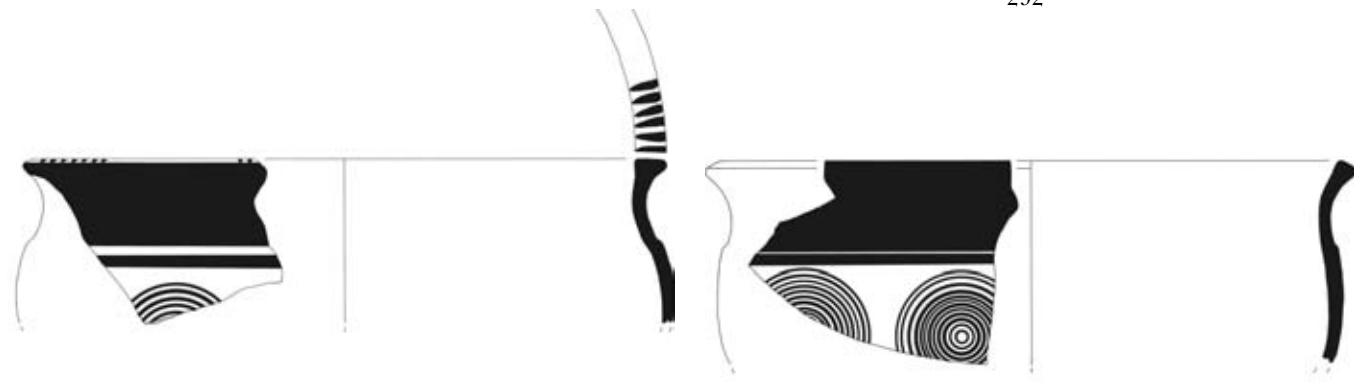


289



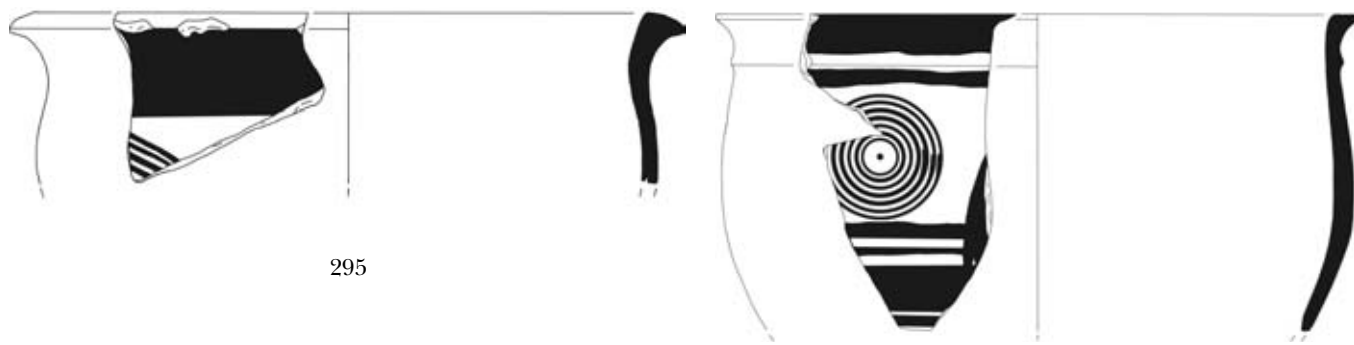
290

292



294

293



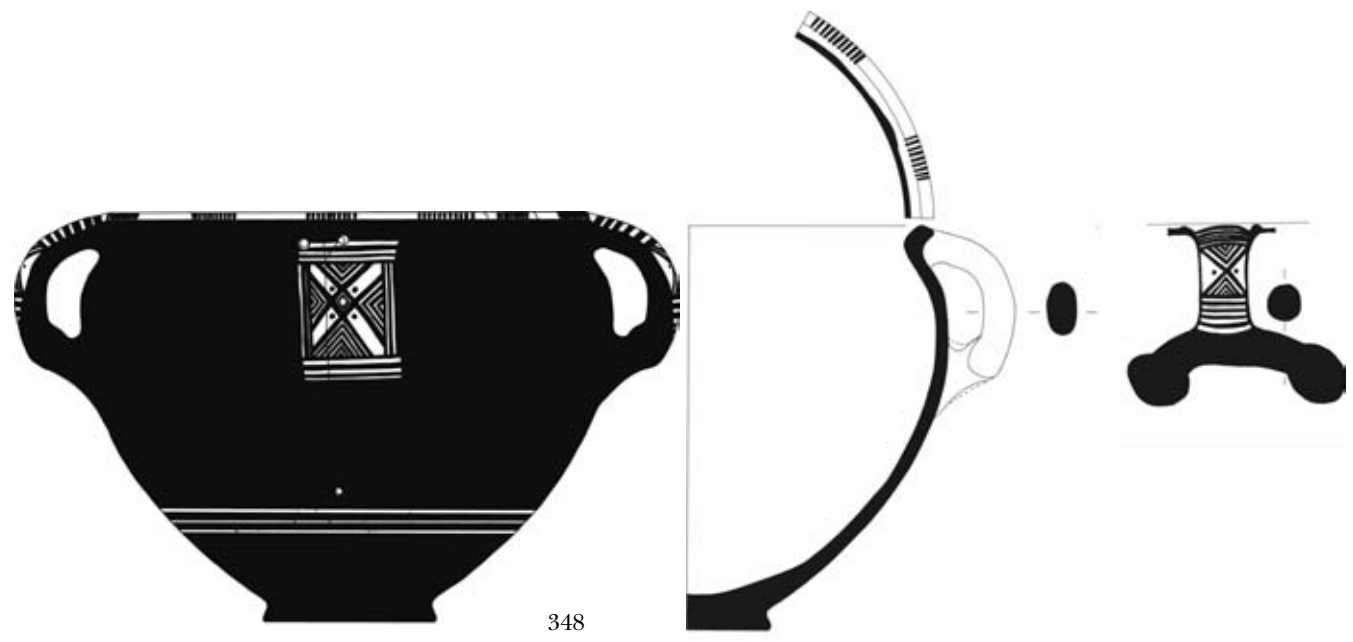
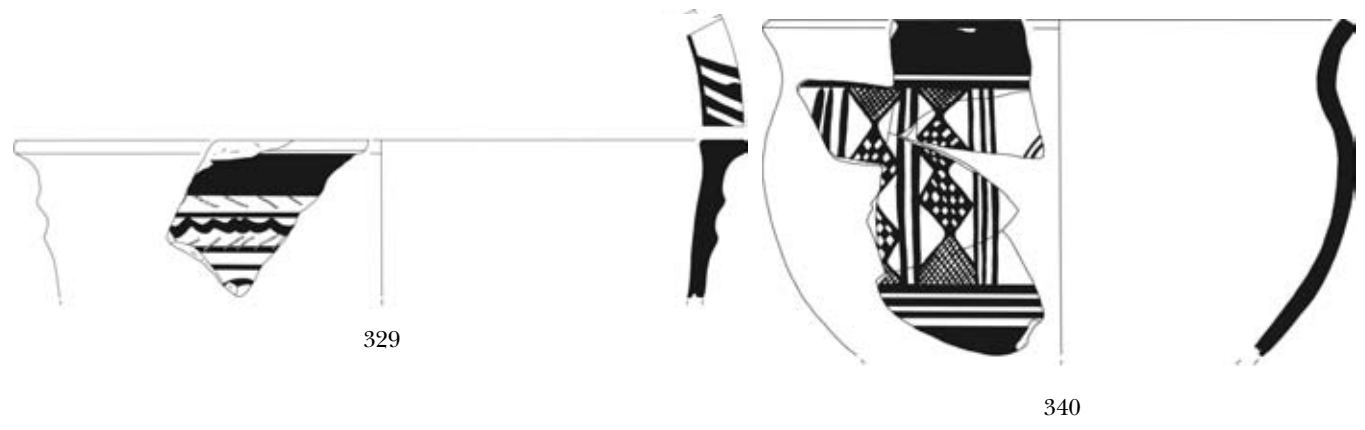
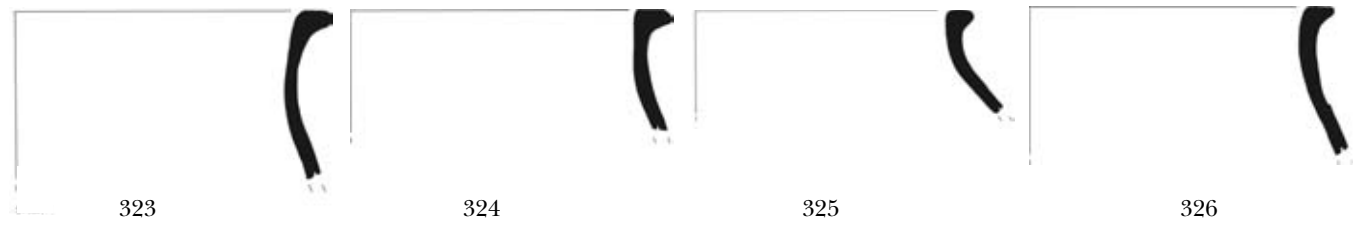
295

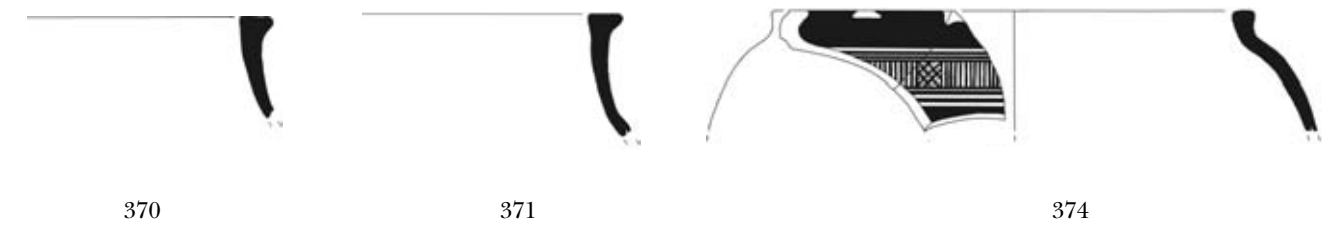
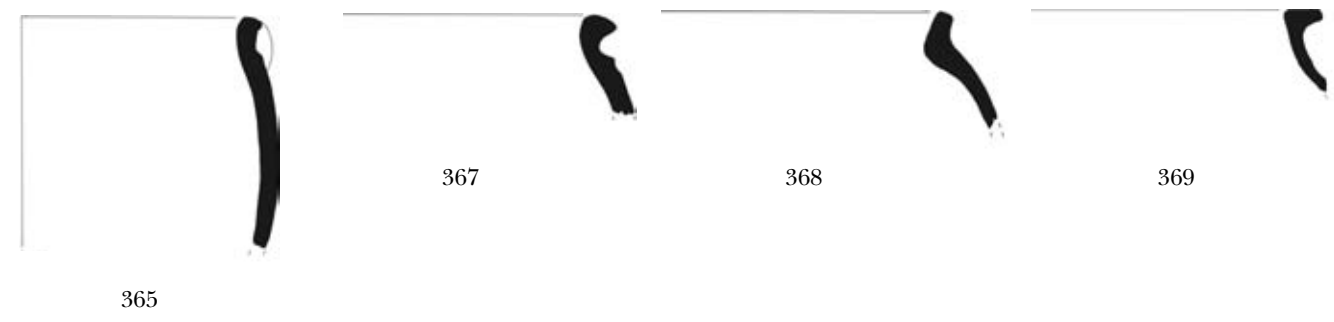
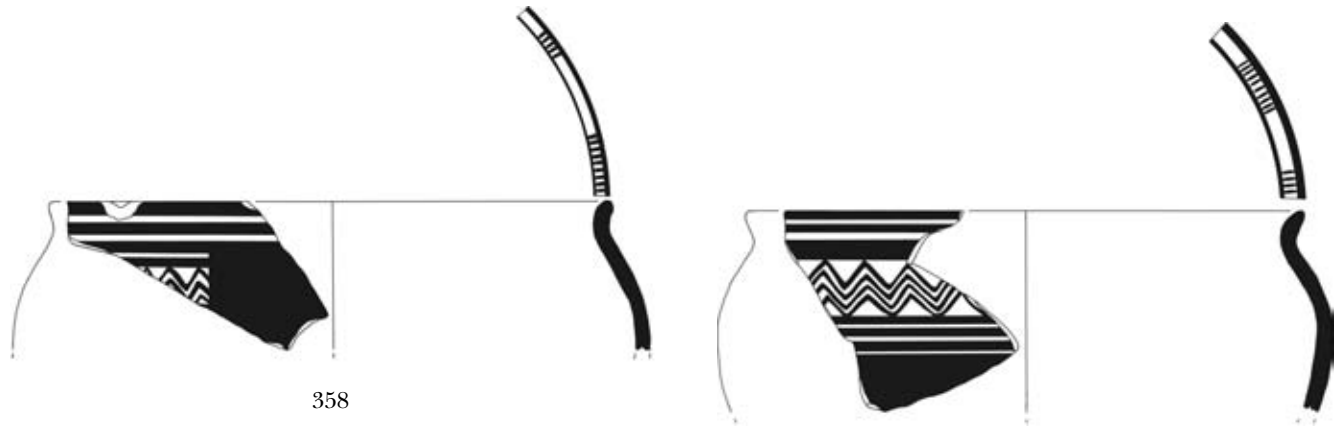
296



306

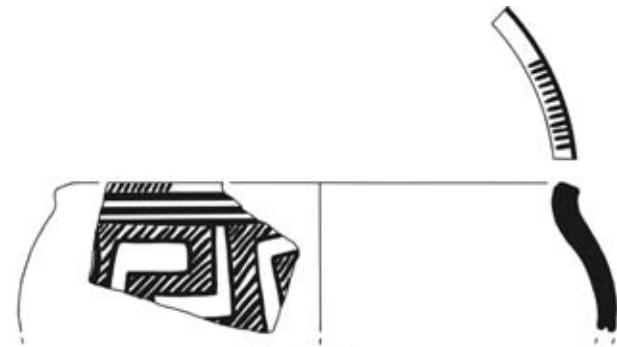
328







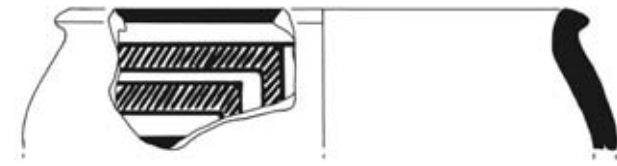
373



375



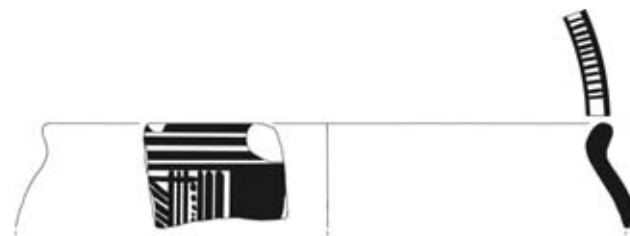
376



378



379



380



384



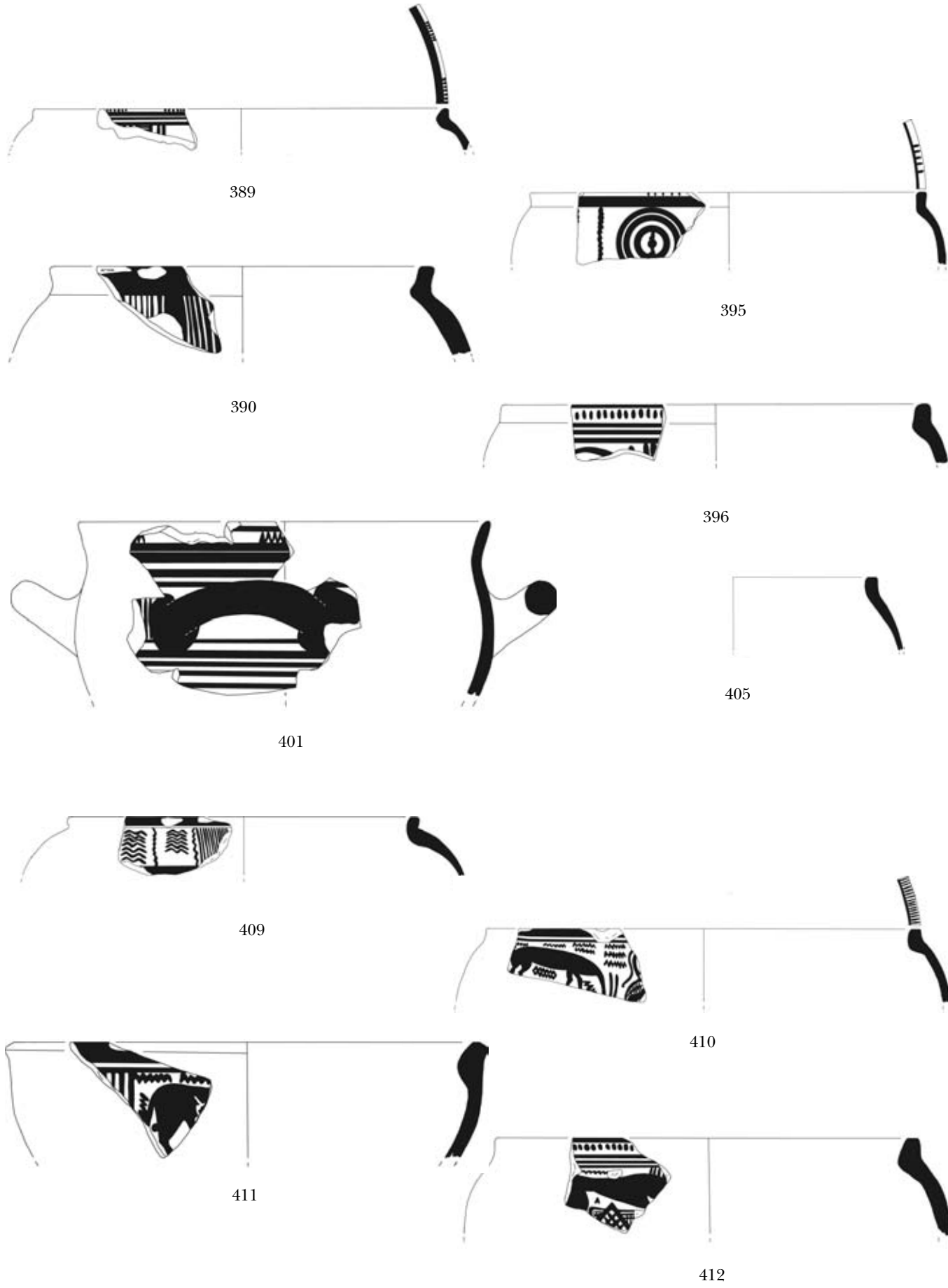
385



386

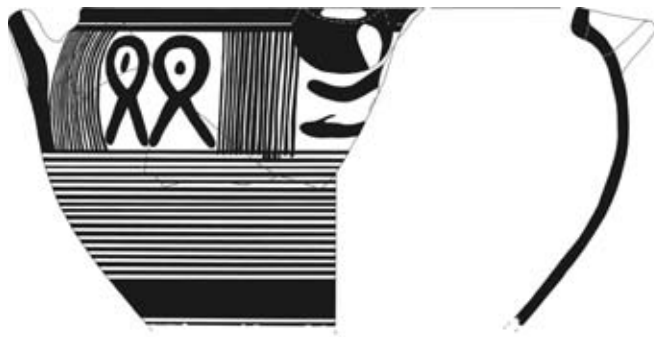


387





406



408



413



414



420



421



422



423



424



425



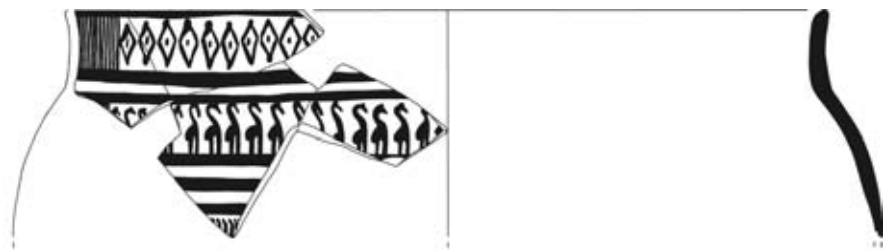
428



429



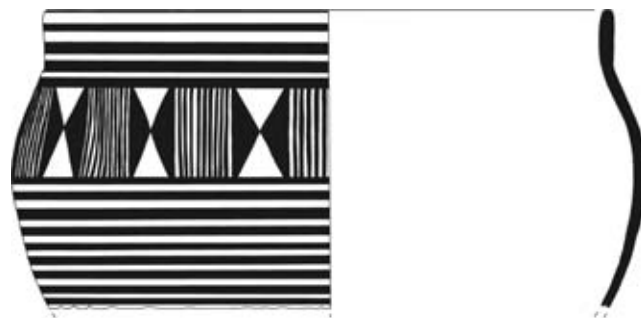
430



431



432



440



451

442



444



445



447



454



455



457

463



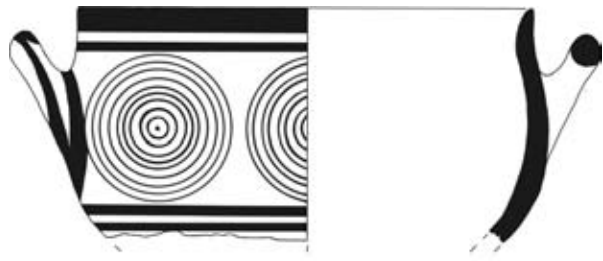
462



469



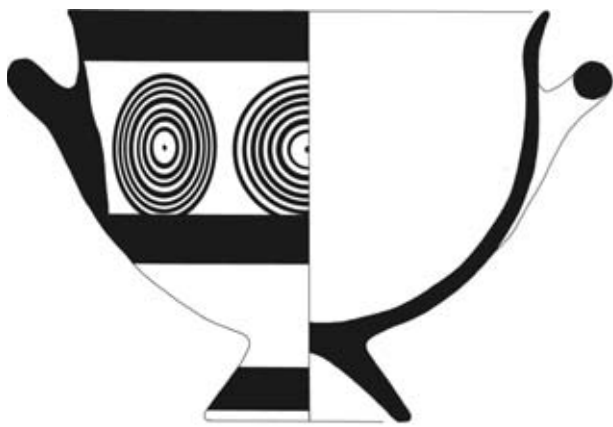
470



472



477d



478



477e



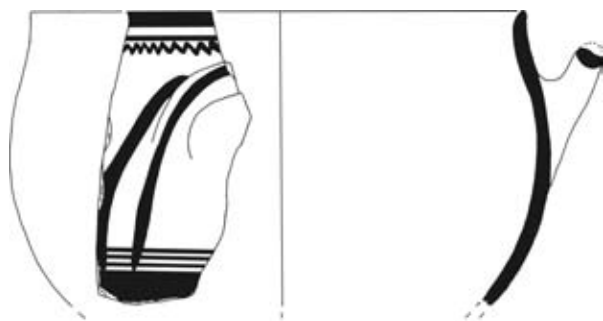
481



500



489



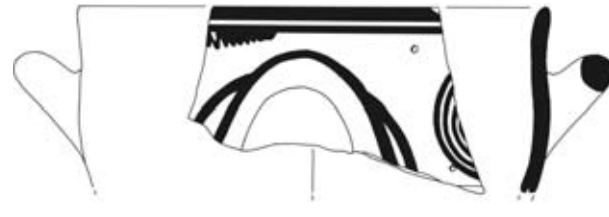
502



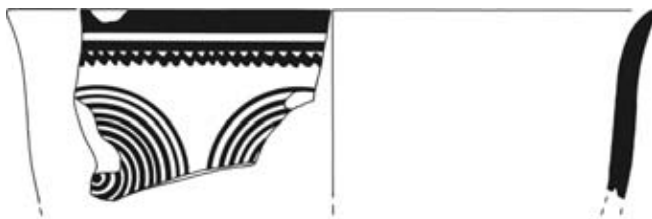
503



505



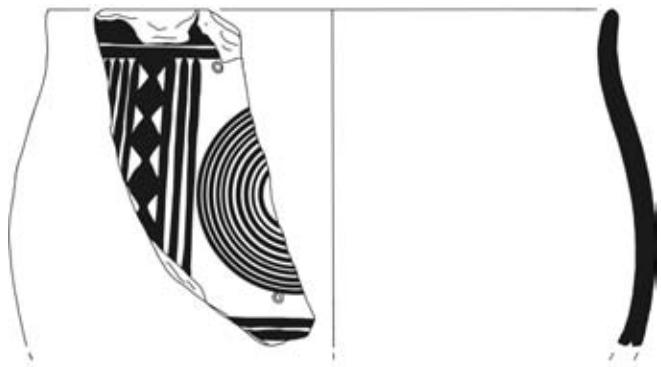
507



508a



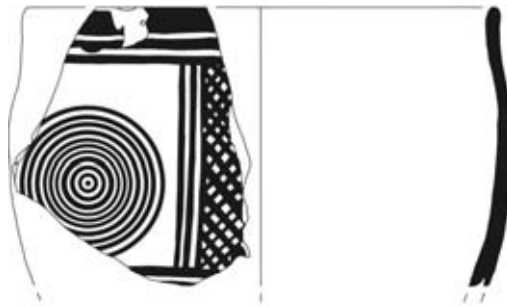
508d



510



511



513



527a



520



527b



527c



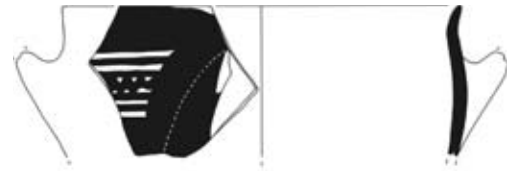
529



539



545



547



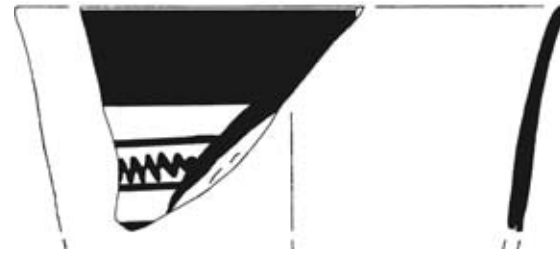
548



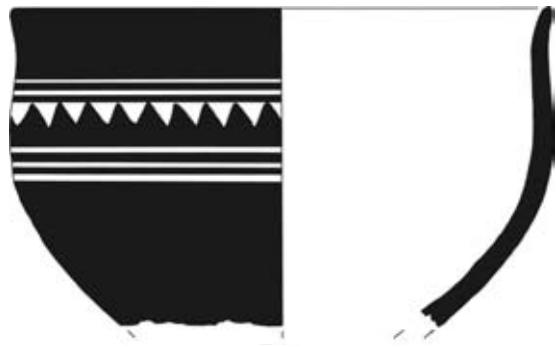
549



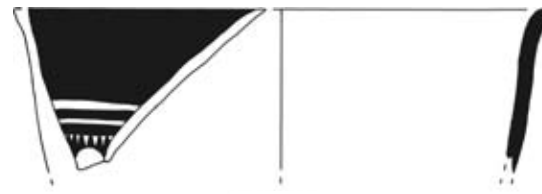
552



563



566



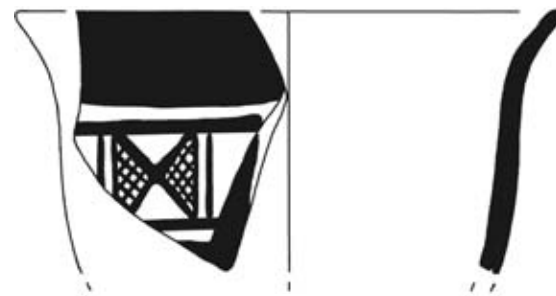
568



564



572



573



580



575



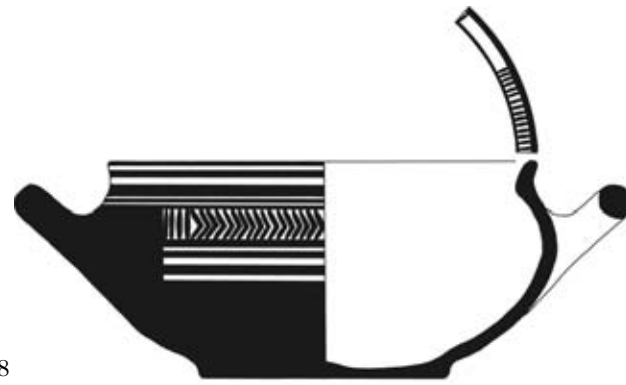
579



581



584



588



589



590



591



593



595a



595b



596a



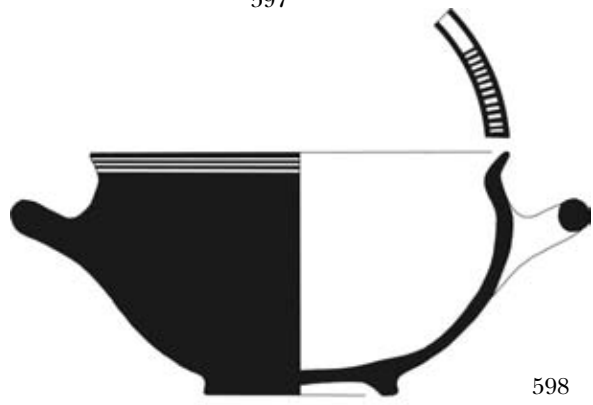
596b



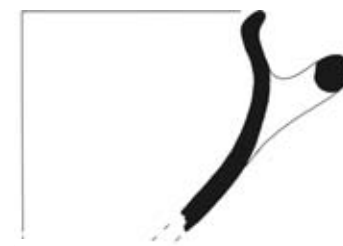
597



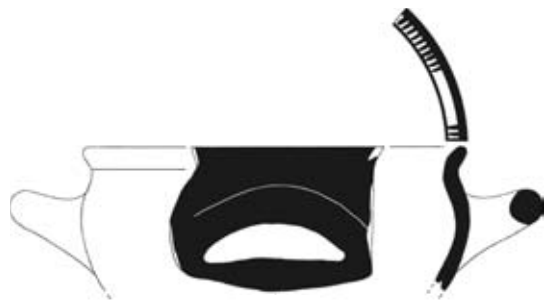
596c



598



599



603



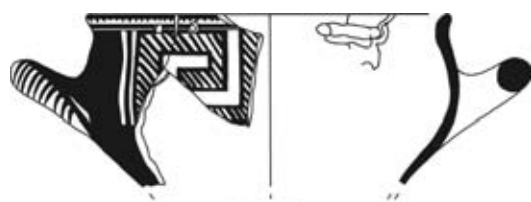
604



605



606



609



610



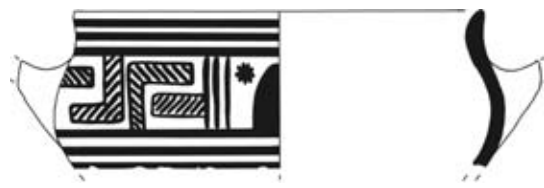
612



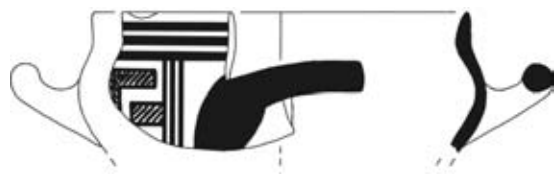
613



614



615



616



617



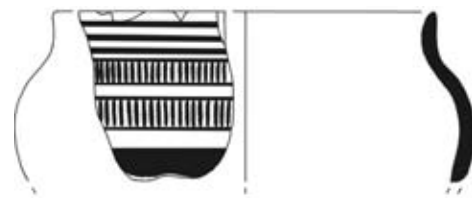
620



621



619



622



623



624



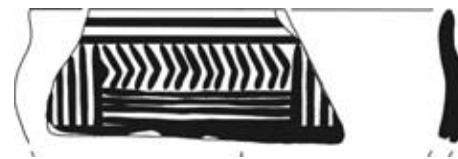
626



627



628



629



630



631



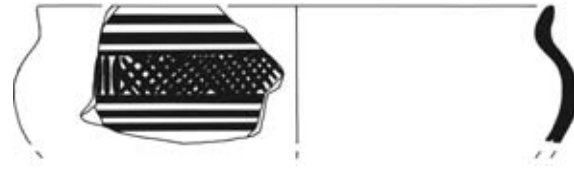
632



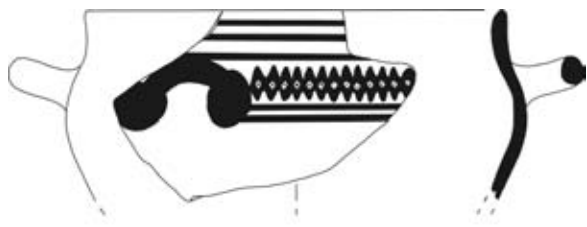
633



634



636



637



638



639



640



641



642



643



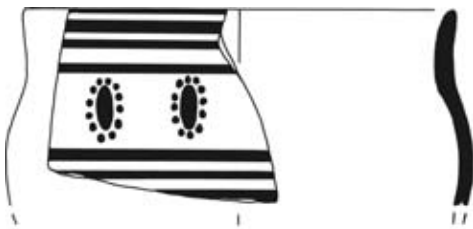
644



645



646



651



648



649



652



650



653



654



655



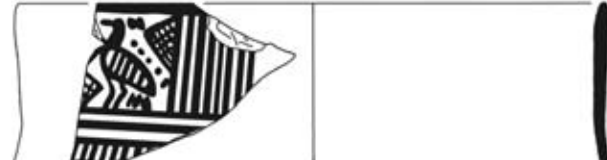
657



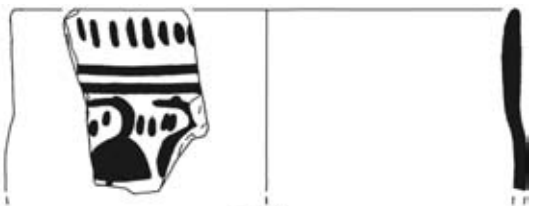
658



660



661



662



663



665



664



666



669



668



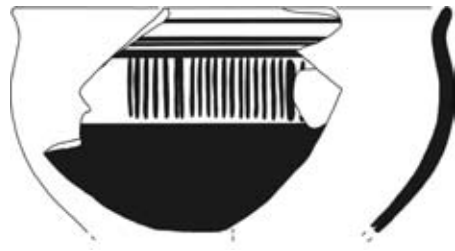
672



673



674



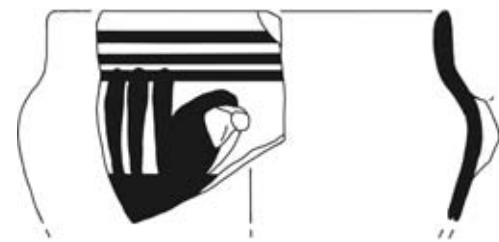
676



677



678



679



680



681



683



684



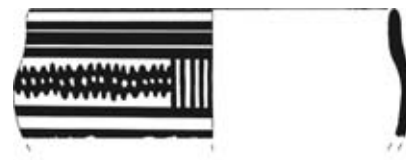
685



686



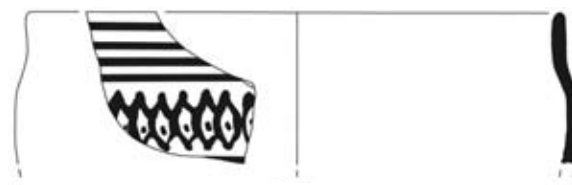
687



688



689



690



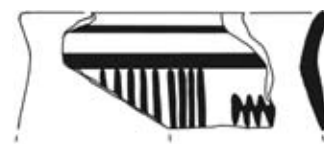
691



692



693



694



695



696



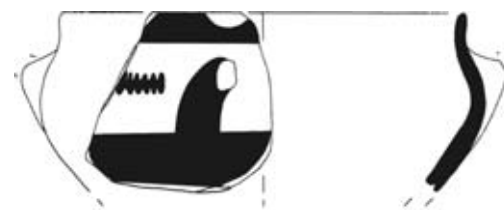
697



698



699



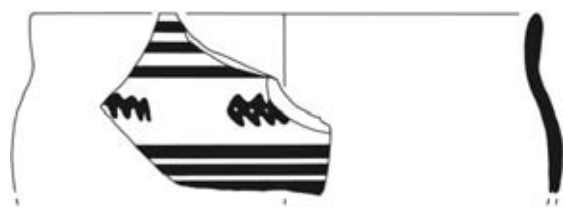
700



701



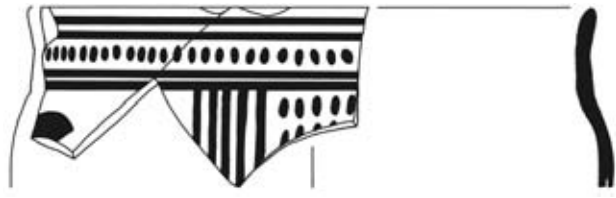
702



703



704



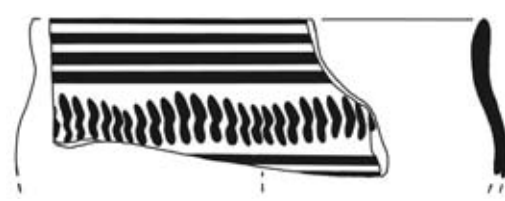
705



706



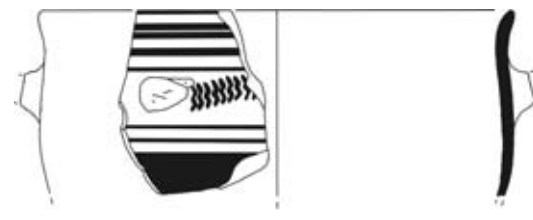
708



709



710



711



713



717



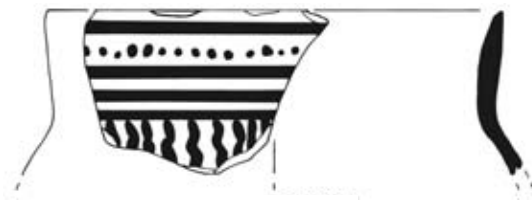
719



720



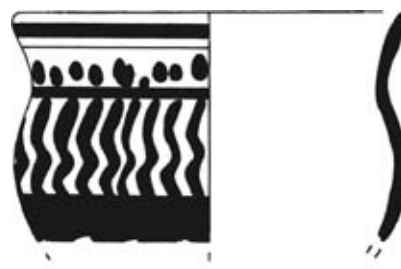
723



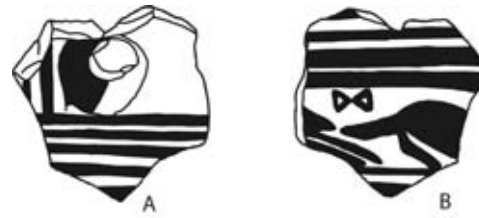
726



728



727



729



730



731



732



733

226



738

Beilage 36



739



740



742



743



744



745



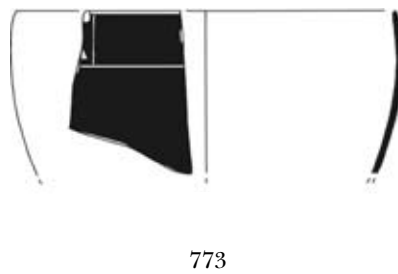
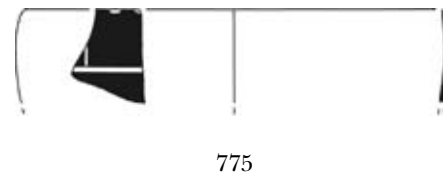
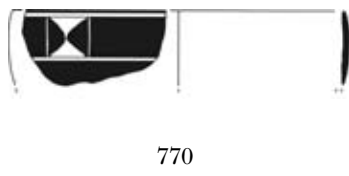
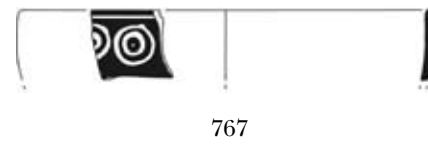
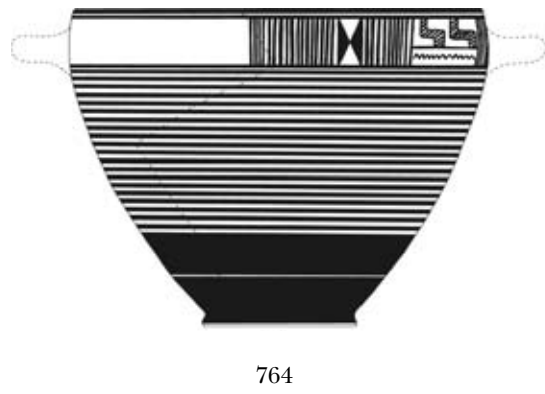
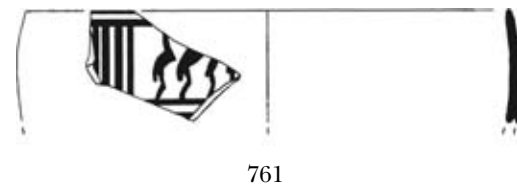
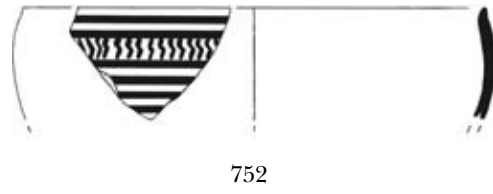
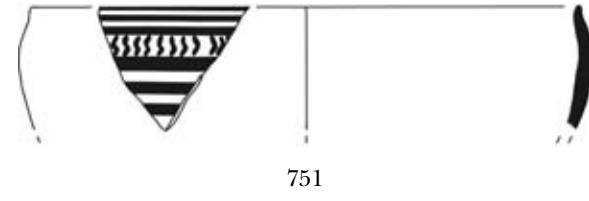
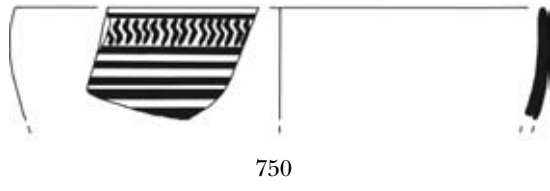
746



748

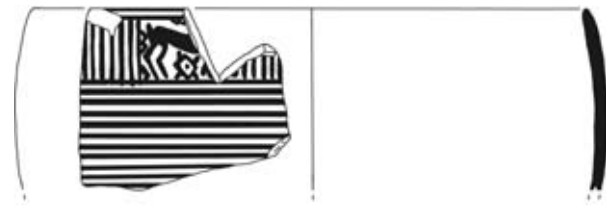


749





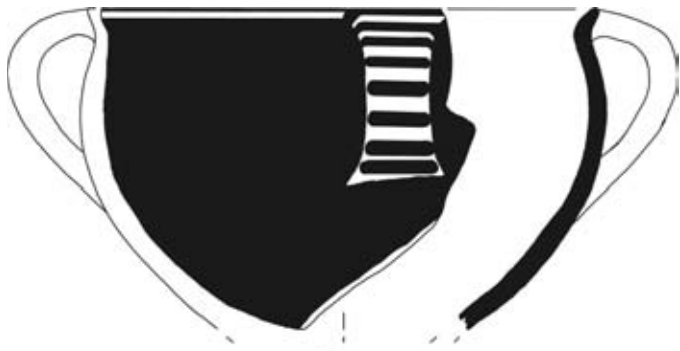
777



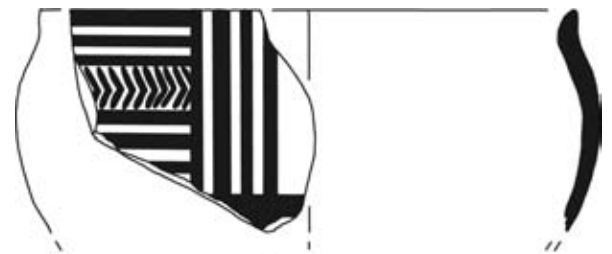
778



780



782



783



784



785



786



787



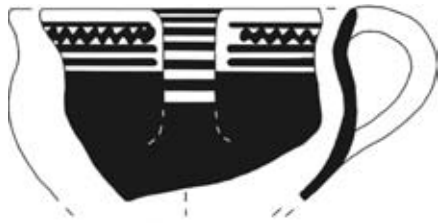
788



790



791



793



794a



792



794b



794c



794d



795



796

230

Beilage 40



798



799



801



800



803



804



805



806



807



808



809



810



811



812



813



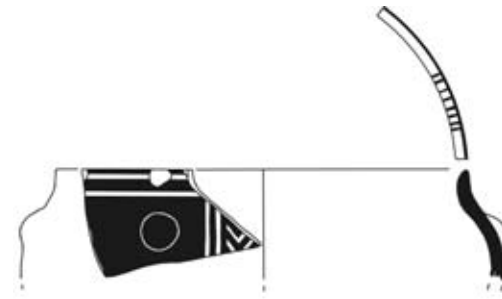
820



822



823



824



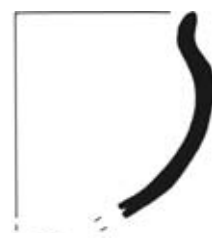
826



825



828



827



829



831



832



833



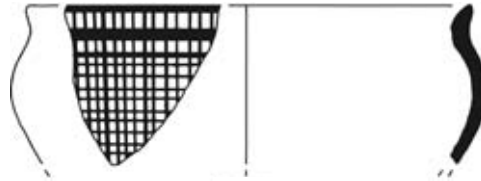
835



836



837



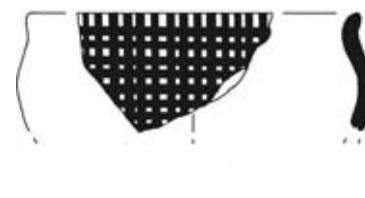
838



840



841



839



842



843



845



846



847



848



849

850

851



854



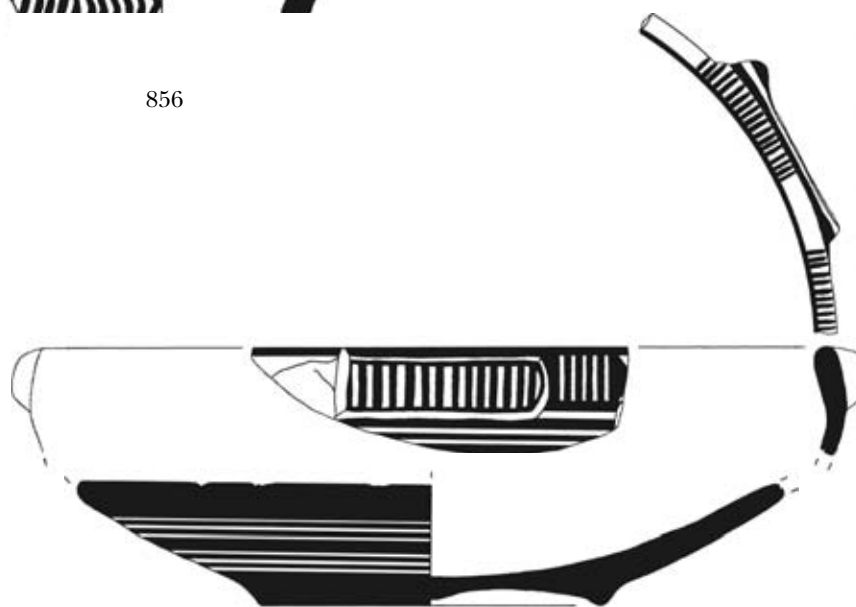
852



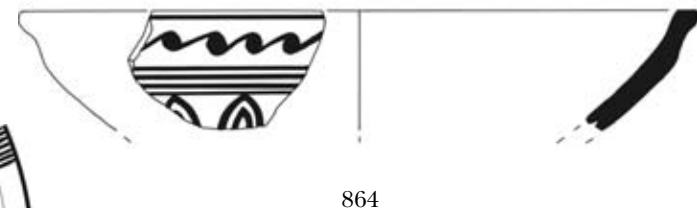
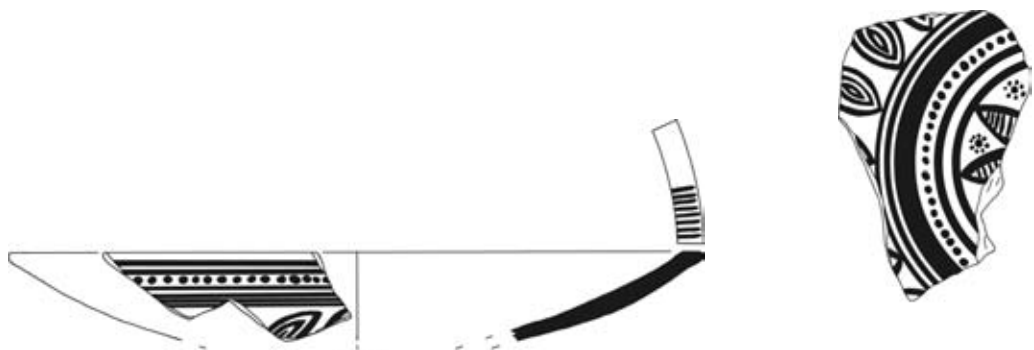
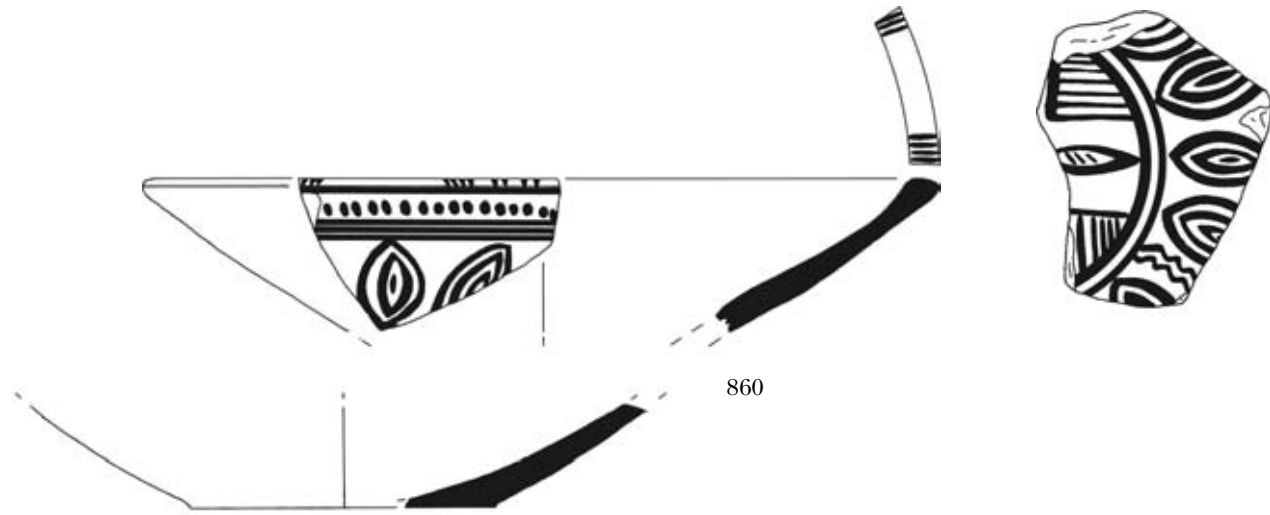
856



857



859





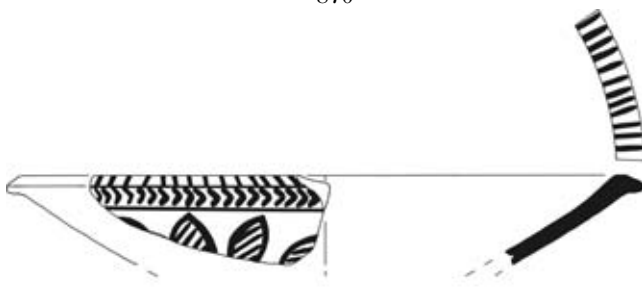
869



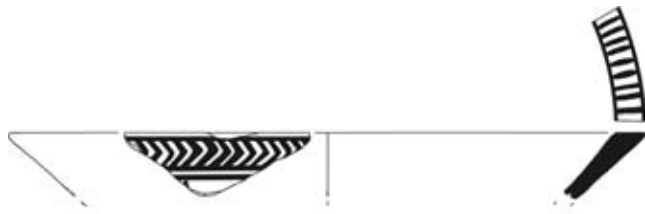
870



871



872



873



874



875



876



877



878



880



882



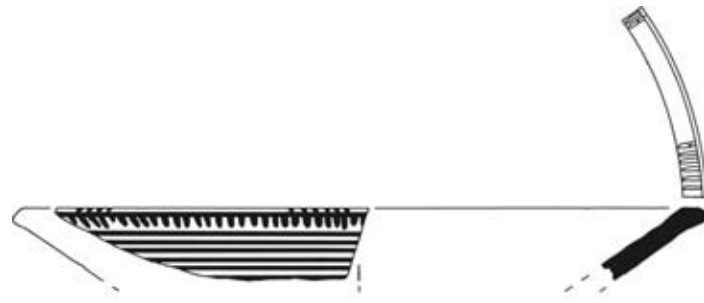
883



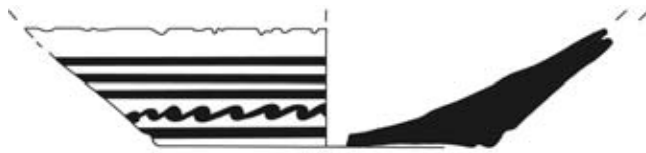
891



892



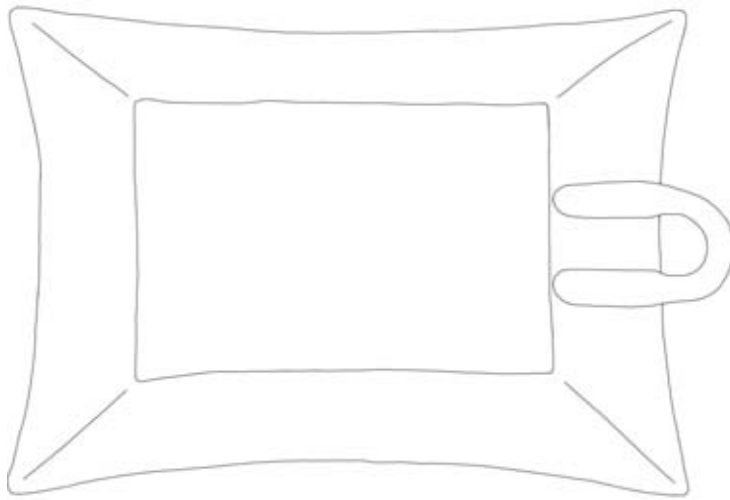
896



893



902



912

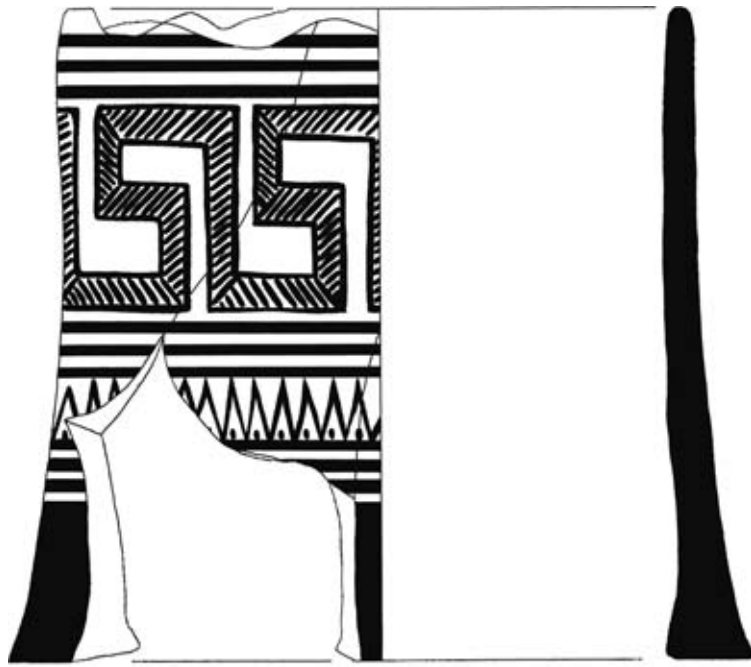


925



930

904



914

932

