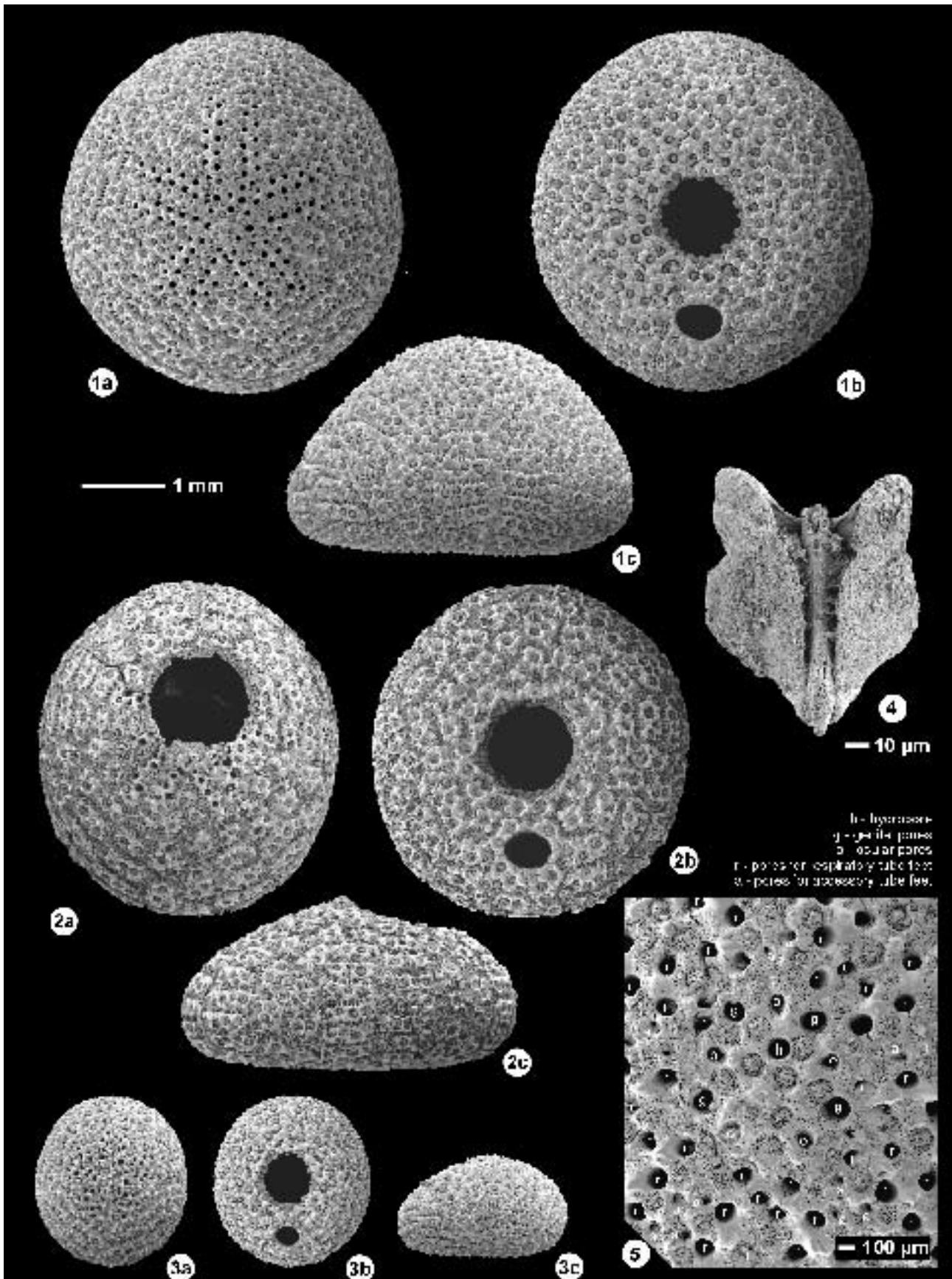


Clypeaster scillae DES MOULINS, 1837: 1: aboral surface cut to reveal internal support structures, Großhöflein, near Eisenstadt, Bgld (NHMW 1869.I.664); 2, 7a-c: Kemence, Hungary (2: NHMW 1858.XXXIX.17; 7: NHMW 1865.XXV.17); 3: Mannersdorf, NÖ (NHMW 1978/2020/13); 4, 8: Müllendorf, Bgld (4: NHMW 2004z0112/0002; 8: NHMW A2328); 5: Wiesfleck, Bgld (NHMW 2004z0113/0001); 6: Kalksburg, W (NHMW 1857.38.28)

📁 *Clypeaster scillae* DES MOULINS, 1837: 1a-b: Kemence, Hungary (NHMW 1858.XXXIX.17); 2a-b: Mannersdorf, NÖ (NHMW 1978/2020/18); 3: Wiesfleck, Bgld (NHMW 2004z0113/0001)

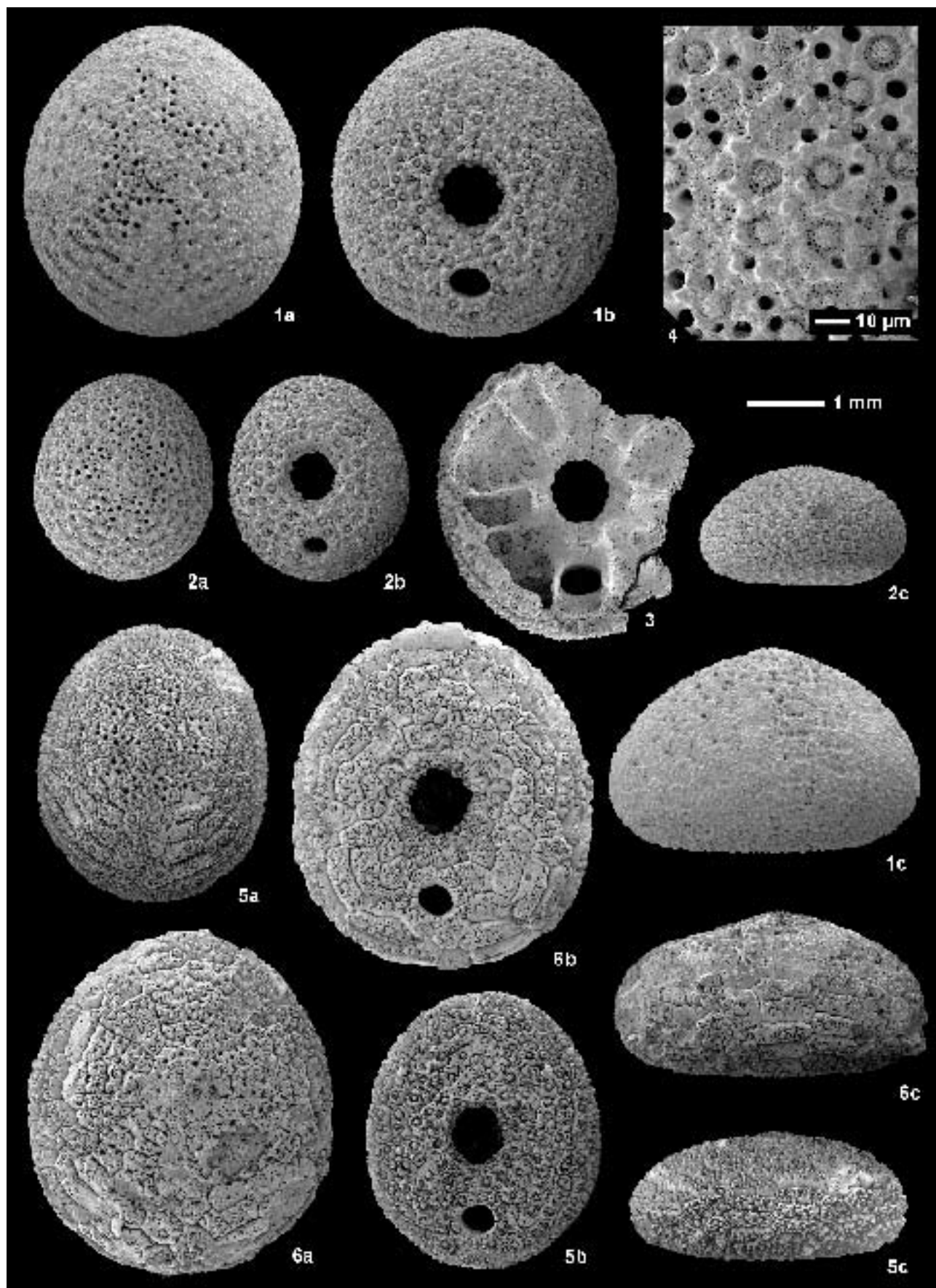


Clypeaster scillae DES MOULINS, 1837: 1a-b, 2a-b: Müllendorf, Bgld (1: NHMW 2004z0112/0002; 2: NHMW A2328)

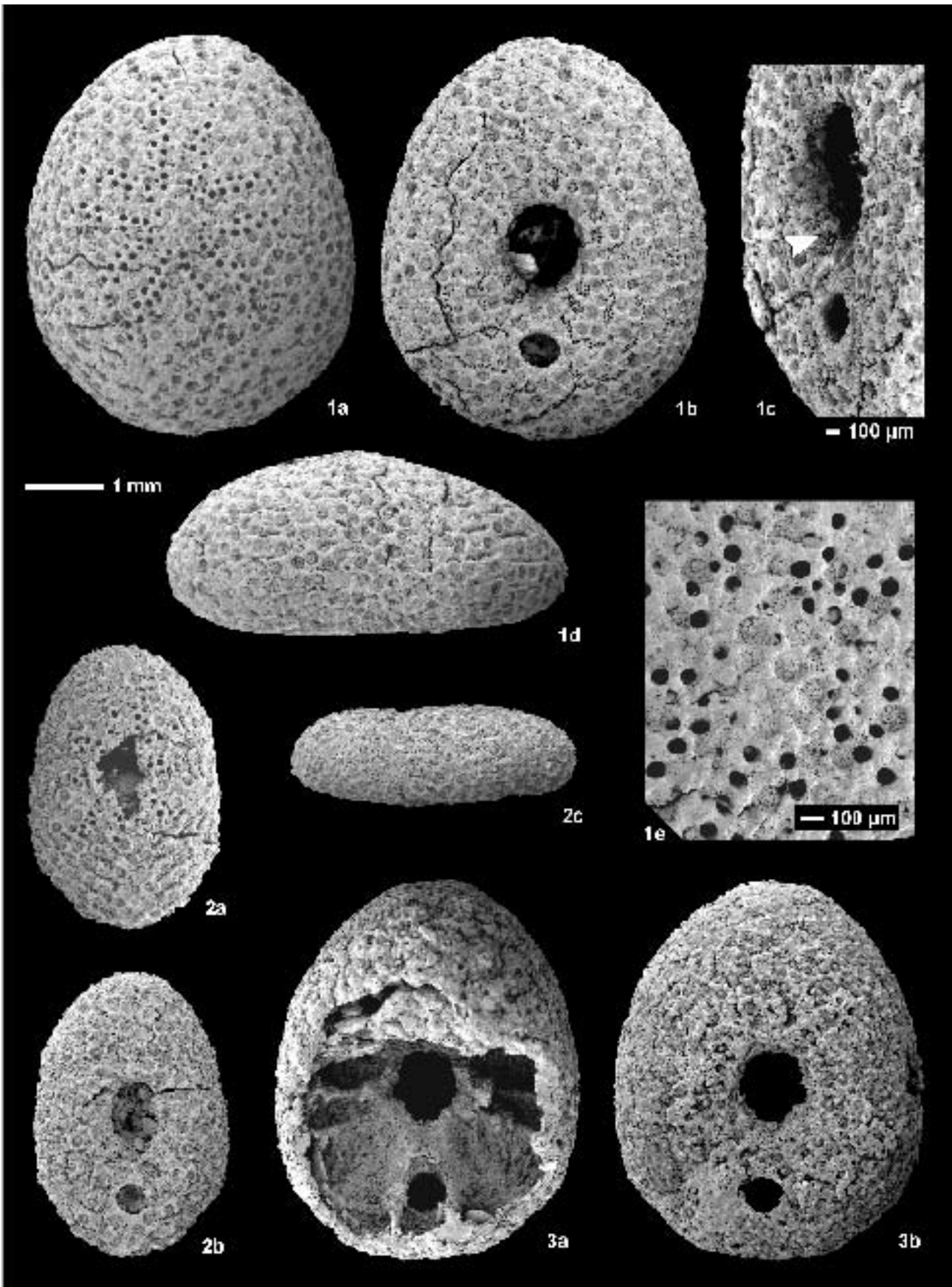


Echinocyamus transylvanicus LAUBE, 1869: 1-3: whole coronas, Lăpugiu des Sus, Romania [1: lectotype (NHMW 1860.XL.529a), 2: paralectotype, note predatory boring (NHMW 1860.XL.529b), 3: paralectotype (NHMW 1859.XLV.615)]; 4: pyramid with tooth, Lăpugiu des Sus, Romania (NHMW 1860.XL.529c); 5: apical disc of lectotype, Lăpugiu des Sus, Romania (NHMW 1860.XL.529a)

"1 mm" scale bar valid for all figures except figs. 4-5; all photographs are SEM images



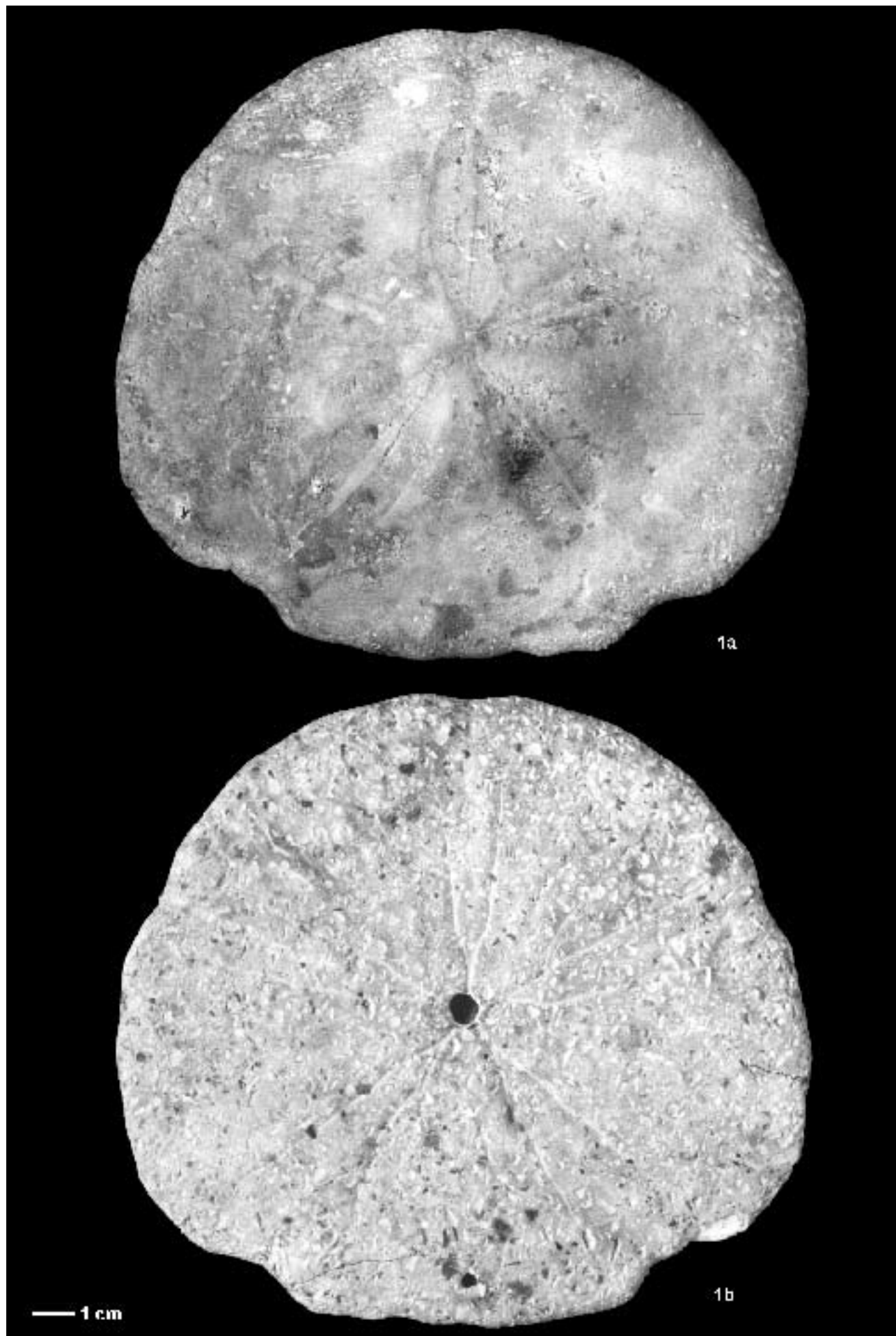
Echinocyamus transylvanicus LAUBE, 1869: 1-3: Baden Tegel, Baden, NÖ (1: NHMW 1852.II.1612b, 2: NHMW 1852.II.1612c, 3: NHMW 1852.II.1612a); 4: apical disc of juvenile specimen figured in 2a-c, note that gonopores are still closed
Echinocyamus pseudopusillus COTTEAU, 1895: 5-6: Hartl Fm., Eisenstadt, Bgld (5: NHMW 1859.L.800b, 6: NHMW 1859.L.800a)
 "1 mm" scale bar valid for all figures except 4; a: aboral views, b: oral views, c: right lateral views; all photographs are SEM images



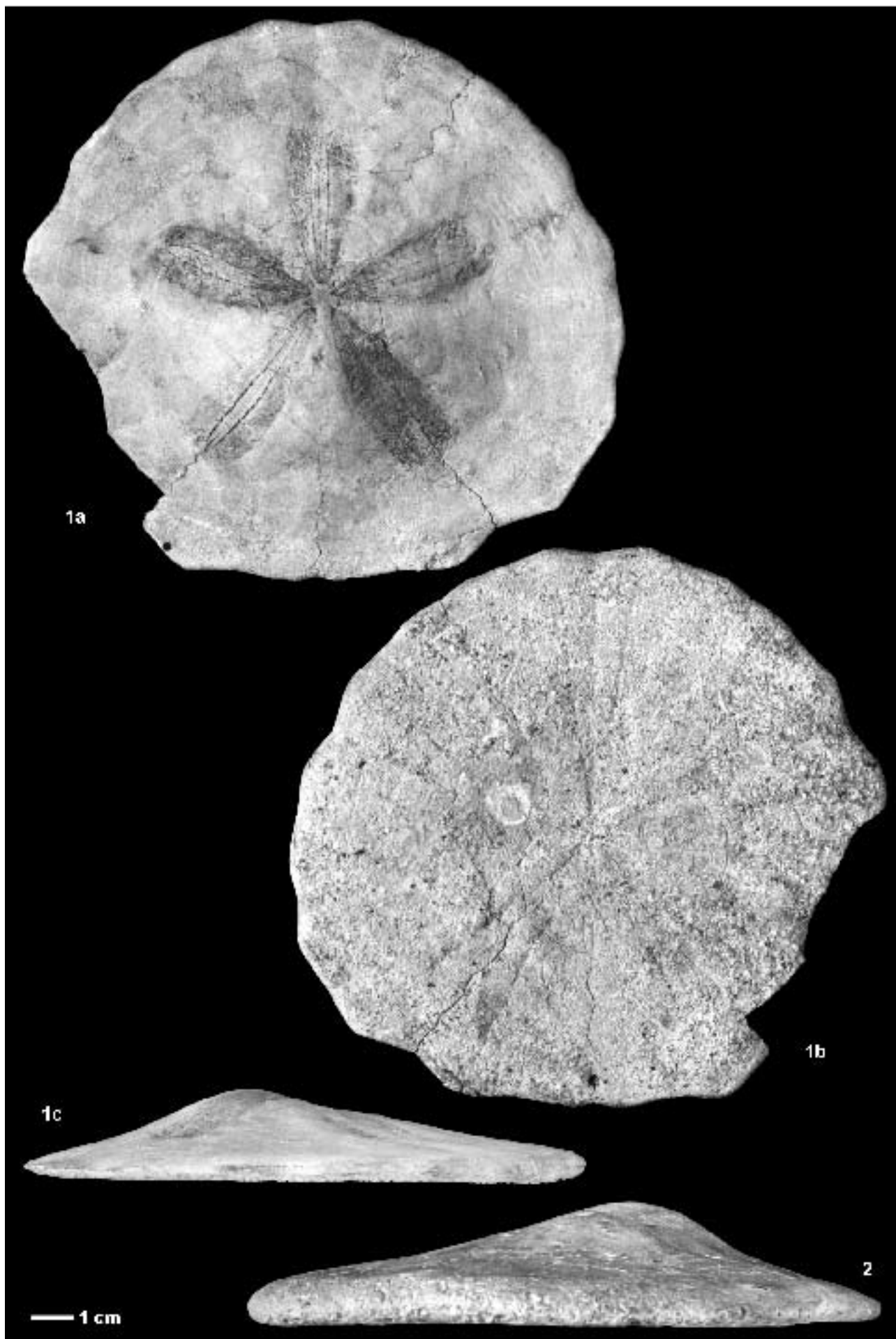
Echinocyamus pseudopusillus COTTEAU, 1895: 1a-e: Gainfarn, NÖ [NHMW 2004z0076/0045; a: aboral view, b: oral view, c: oblique oral view, note depressed posterior margin of peristome (arrow), d: left lateral view, e: apical disc]; 3a-b: Gainfarn, NÖ [NHMW 2004z0076/0046, a: aboral (note paired internal partitions), and b: oral view]

Echinocyamus calariensis ? LAMBERT, 1907: 2a-c: Gainfarn, NÖ (NHMW 2004z0076/0047; a: aboral, b: oral, and c: left lateral views)

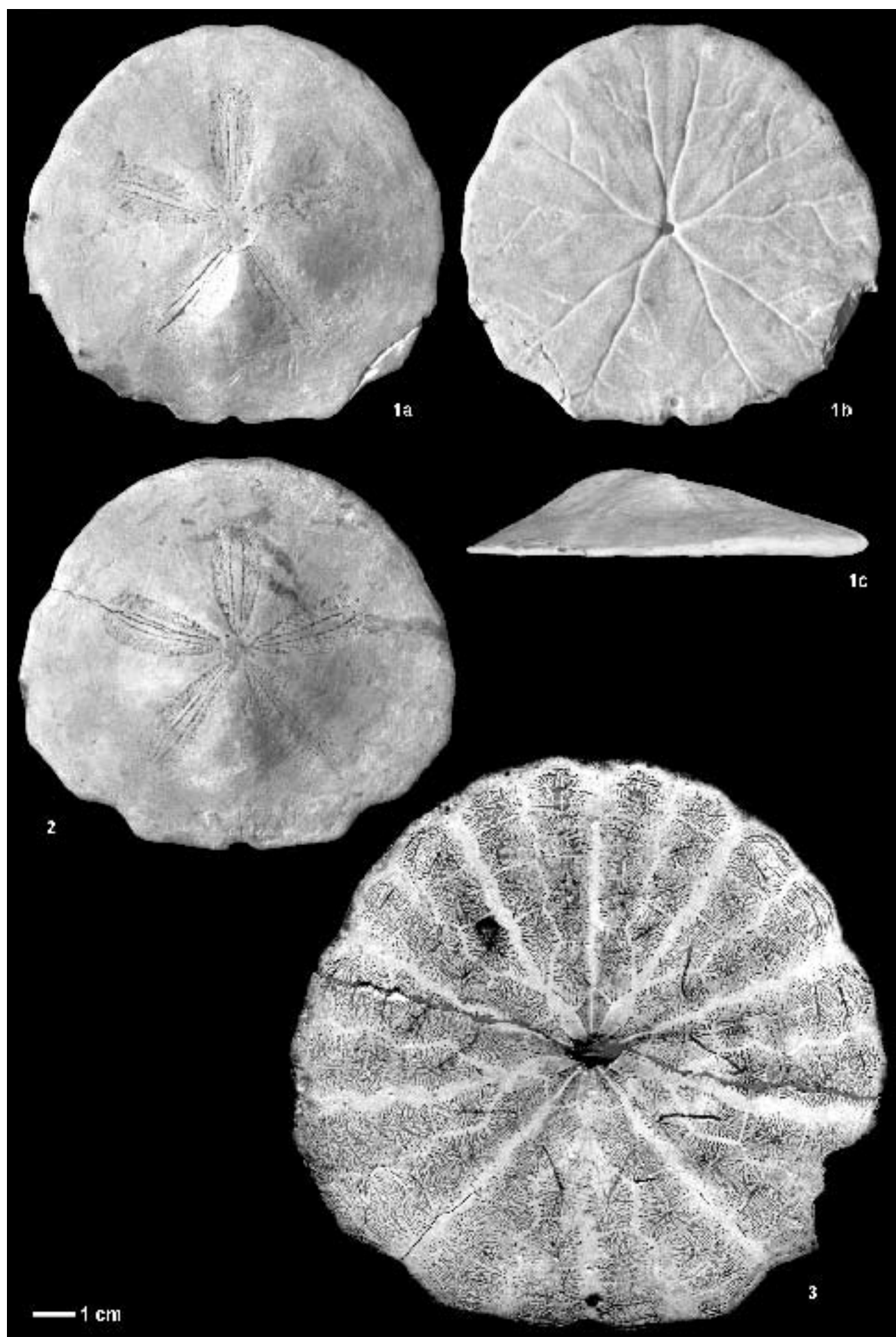
"1 mm"-scale bar valid for all figures except 1c and 1e; All photographs are SEM images

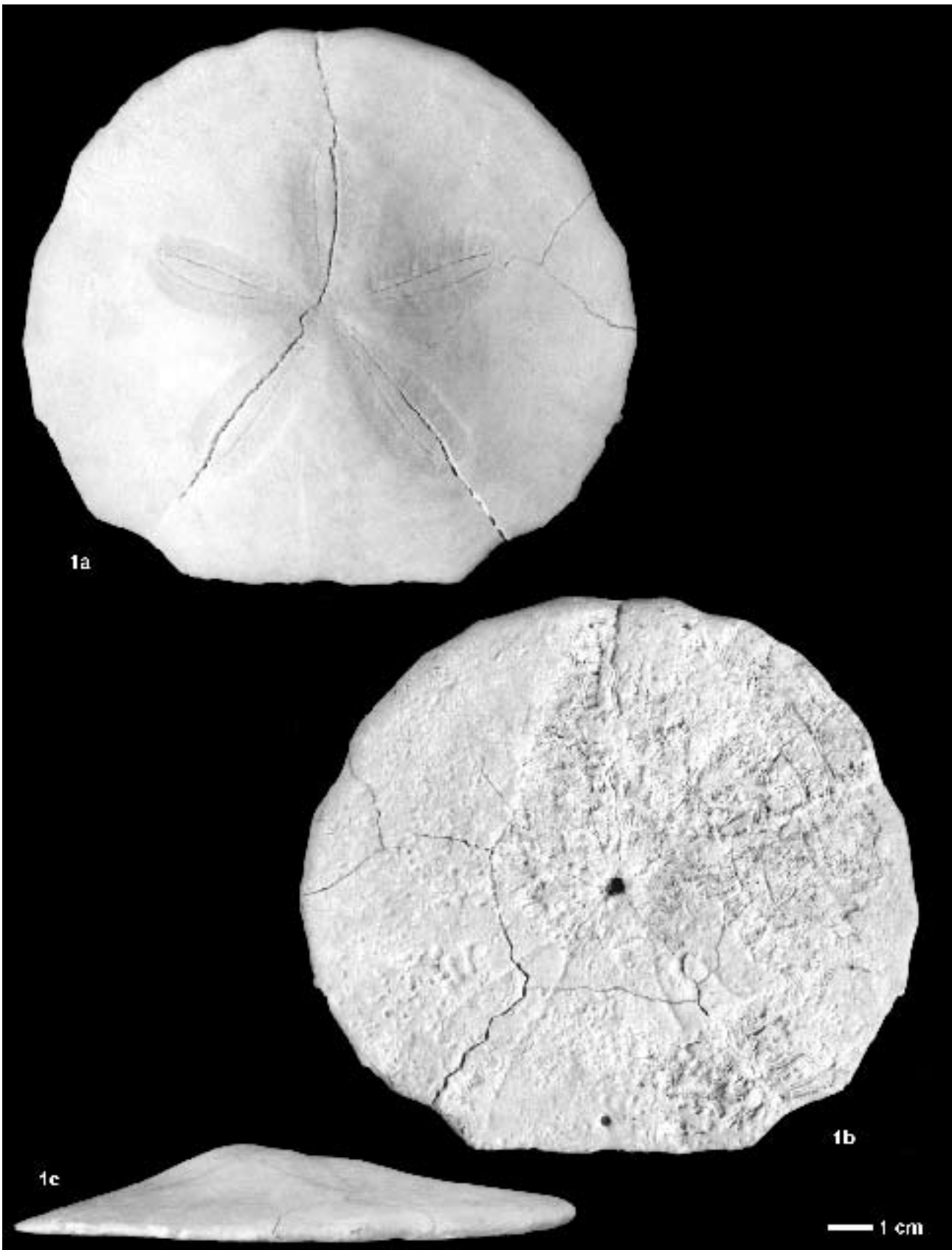


Parascutella gibbercula (DE SERRES, 1829): 1a-b: Kalksburg, Vienna (lectotype of *Scutella vindobonensis* LAUBE, 1869; NHMW 1904.VIII.59; slightly reduced)



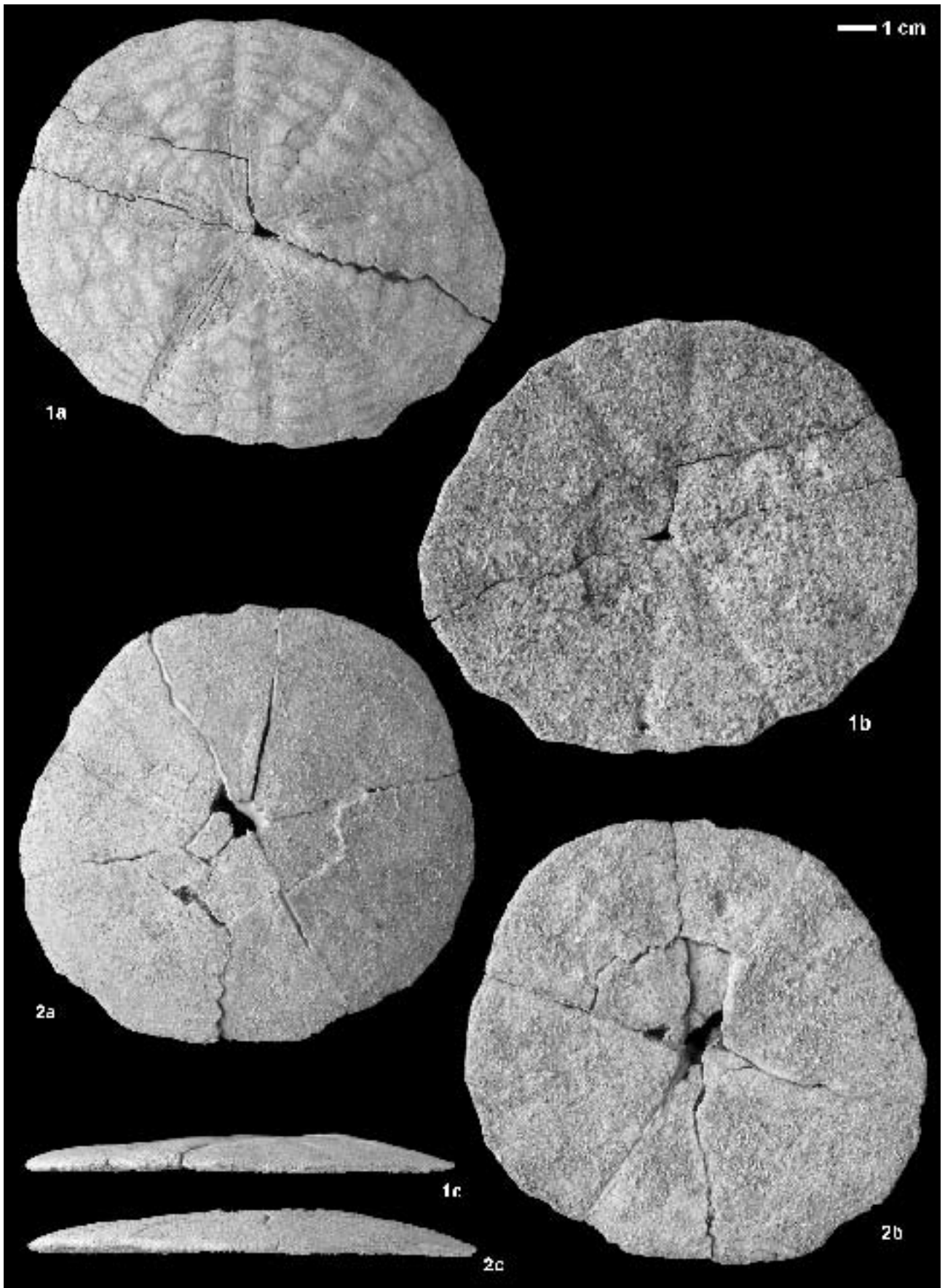
Parascutella gibbercula (DE SERRES, 1829): 1a-c: Devínska Nová Ves, SK (holotype of *Scutella vindobonensis secunda* SCHAFFER, 1962; NHMW 1964/589); 2: Kalksburg, Vienna (lectotype of *Scutella vindobonensis* LAUBE, 1869; NHMW 1904.VIII.59)





Parascutella gibbercula (DE SERRES, 1829): 1a-c: Müllendorf, Bgld (NHMW 1997z0178/1757; slightly reduced)

- ◁ *Parascutella gibbercula* (DE SERRES, 1829): 1a-c: Neckenmarkt, Bgld (holotype of *Scutella multiconcava* SCHAFFER, 1962; NHMW 390/1961; slightly reduced); 2: Neckenmarkt, Bgld (AO of *Scutella multiconcava* SCHAFFER, 1962; NHMW 1965/590; slightly reduced); 3: oral surface ground to reveal the plating pattern and the microcanal system, Kalksburg, Vienna (NHMW 2004z0111/0001; slightly reduced)



Parascutella paulensis (AGASSIZ, 1841): 1a-c, 2a-c: Niederkreuzstetten, NÖ (1: holotype of *Scutella media* SCHAFER, 1962, NHMW 1861.L.137; 2: NHMW 2004z0077/0001)

a: aboral, b: oral, c: left lateral view