

## **PLATES**

---





Plate 1 Country map of Sudan in Africa, with location of Sai Island (© AcrossBorders, Martin Fera 2016)

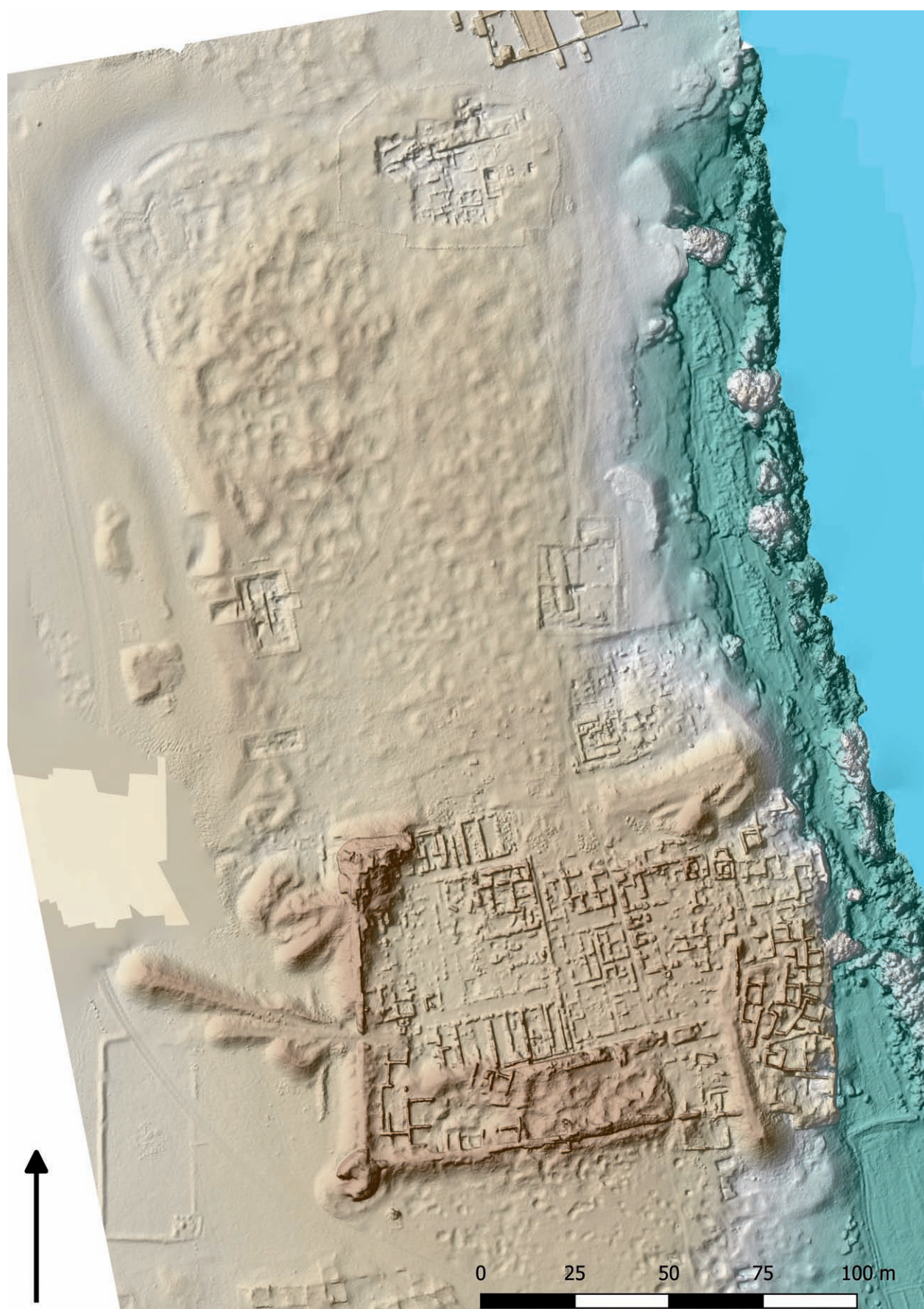


Plate 2 Digital Surface Model (shaded relief) of the New Kingdom town of Sai (© AcrossBorders, Martin Fera 2016)



Plate 3 Orthophoto of sector SAV1 North (© AcrossBorders, Martin Fera 2016)

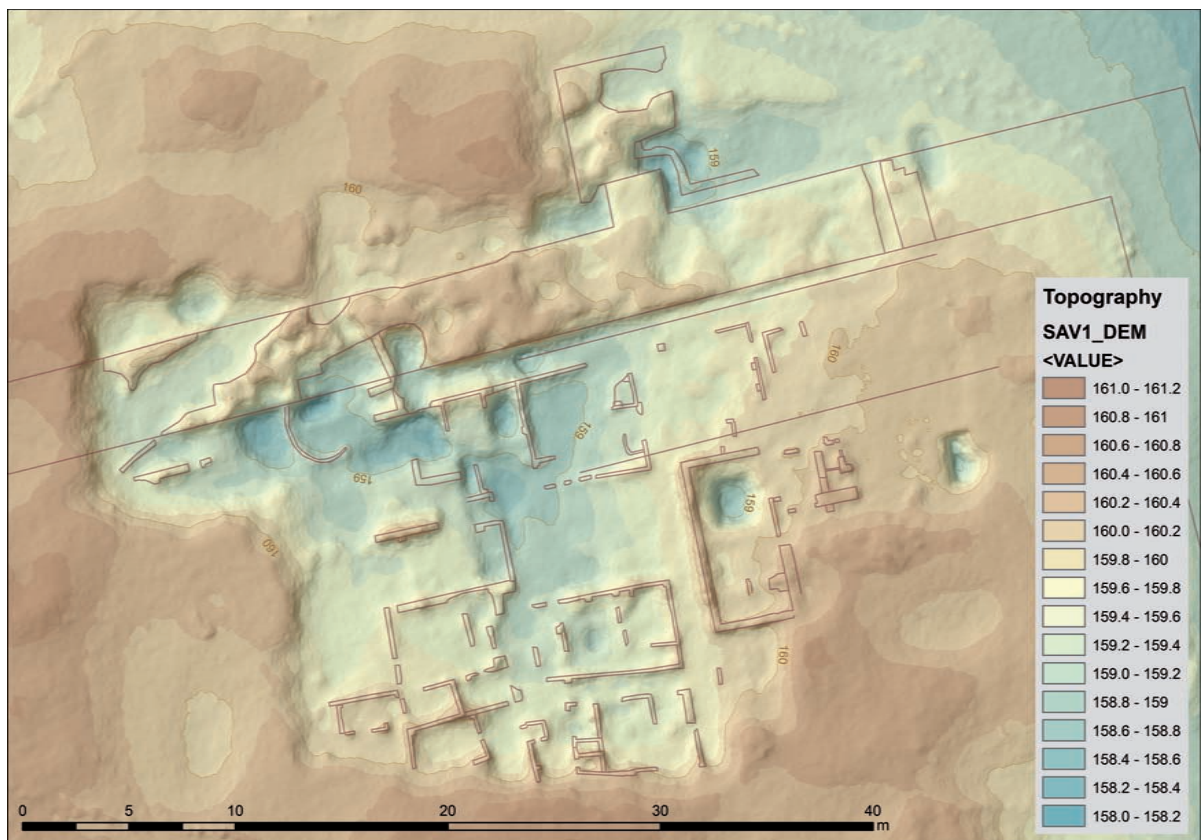


Plate 4 Digital Surface Model (shaded relief) of SAV1 North with topographical features and heights (© AcrossBorders, Martin Fera 2016)



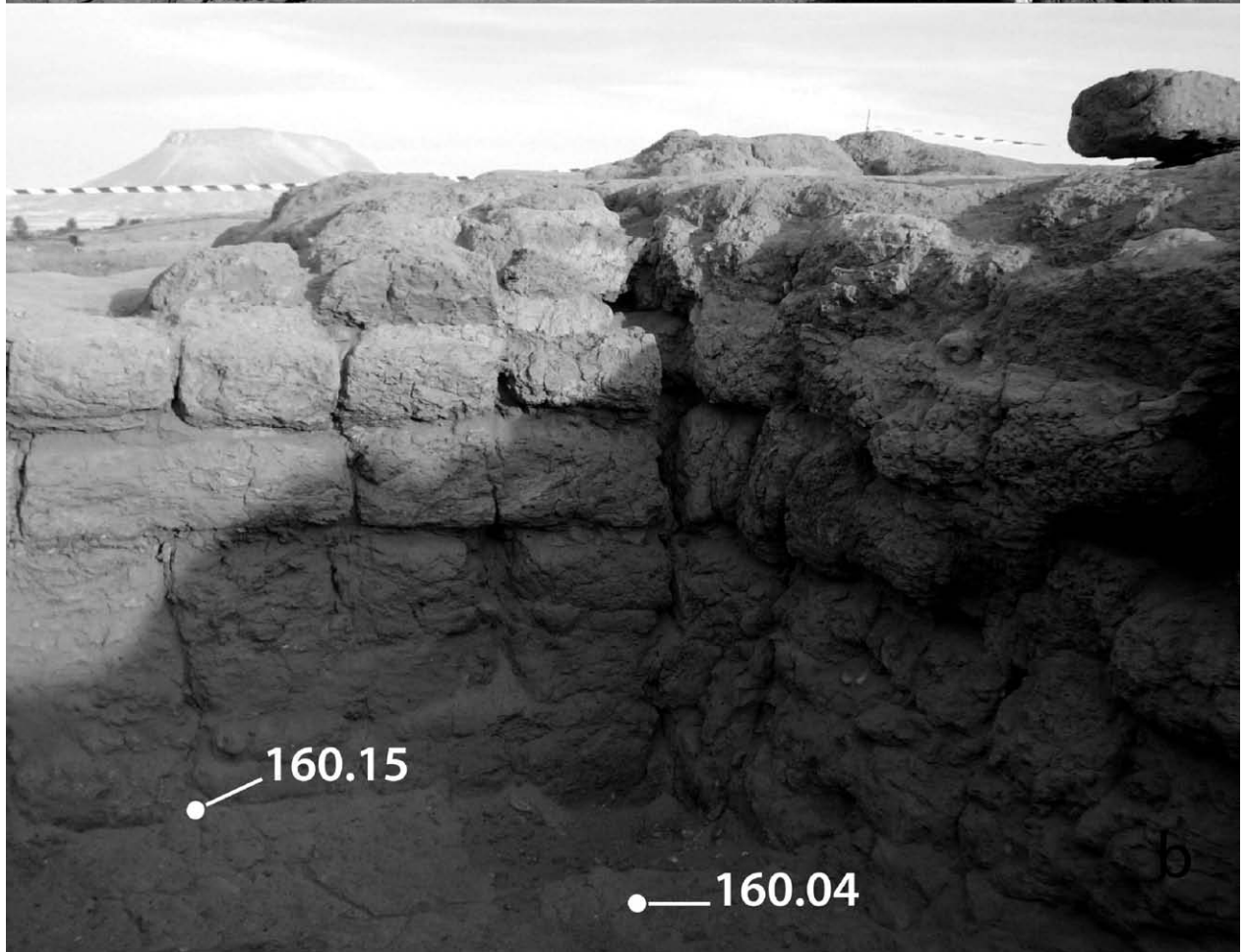
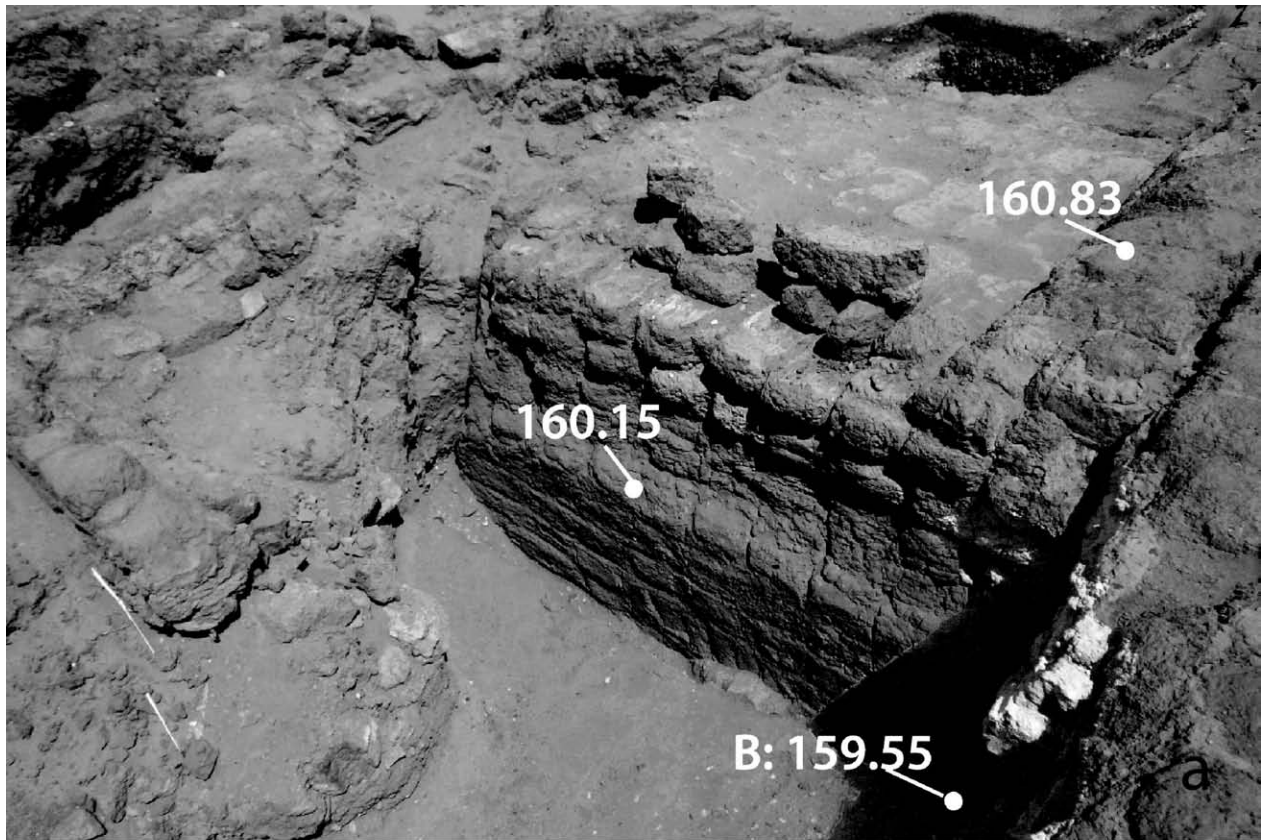


Plate 6 Views to western face of Brick Tower N3 (© SIAM, Florence Doyen)

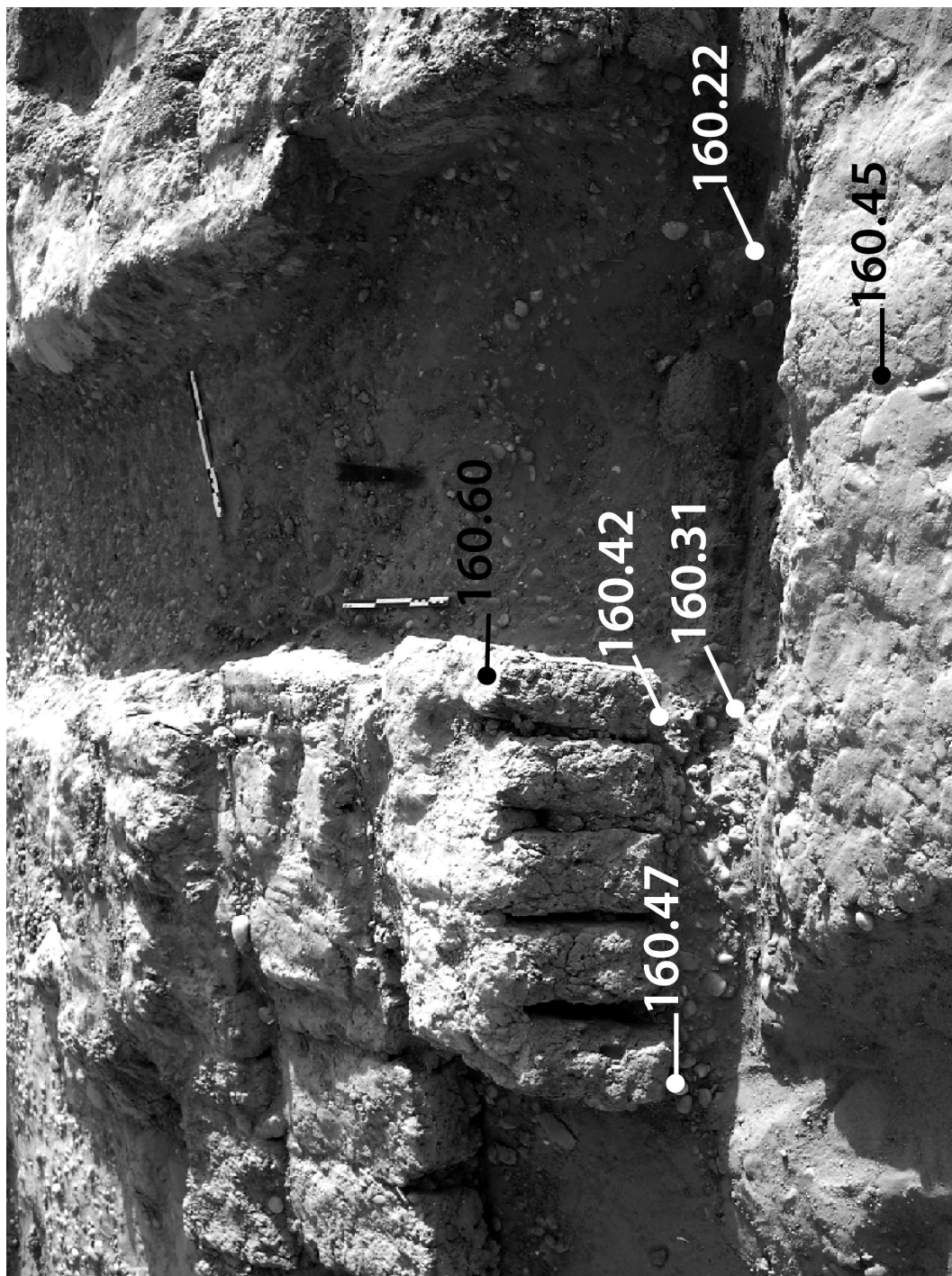
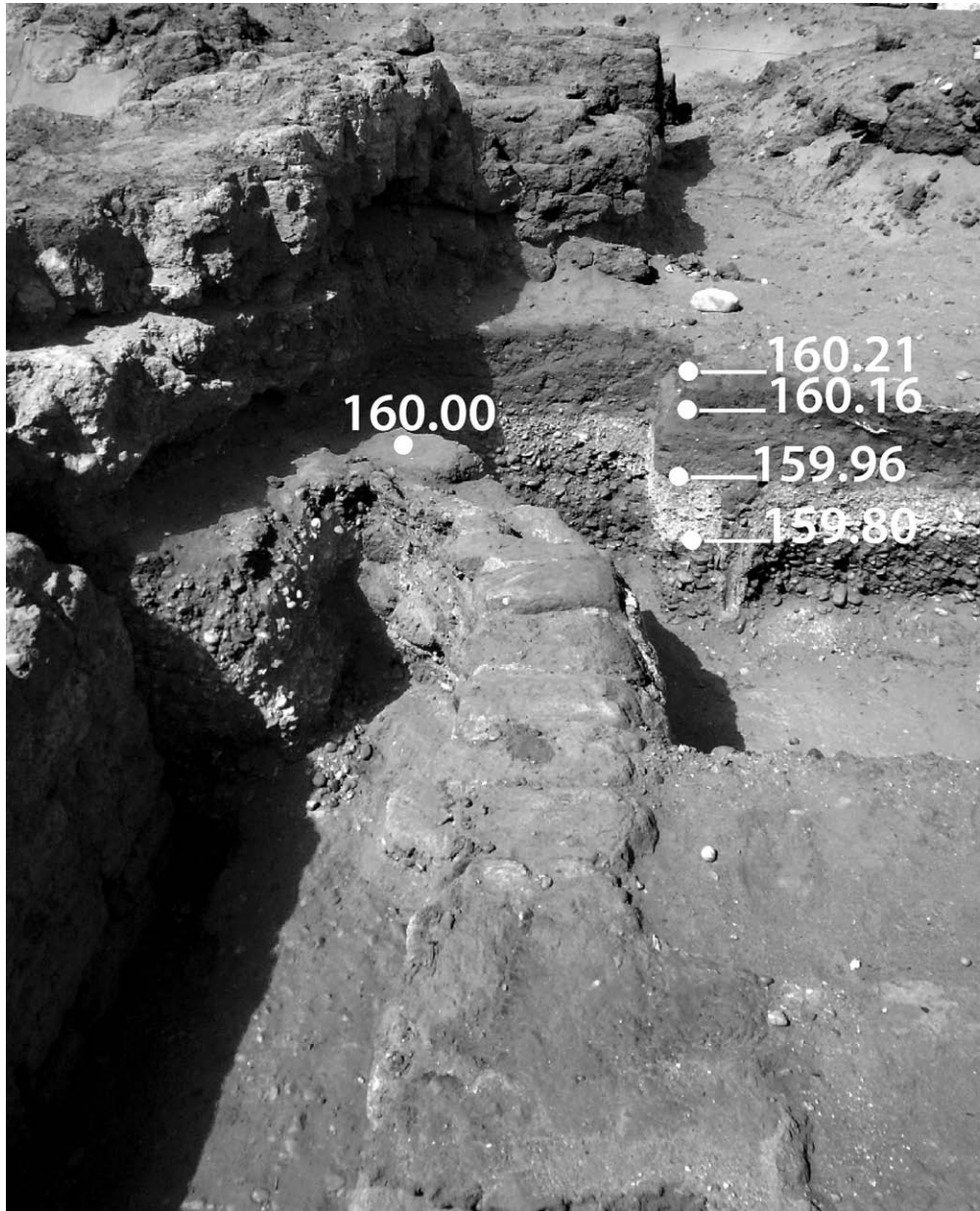


Plate 7 The northern facing of the Enclosure Wall N4's eastern end, after the core masonry was removed as sondage, view to south (© SIAM, Florence Doyen)





(N28De4b)  
(N28De3b)  
(N28De2b)  
(N28De1b)

Plate 8 View to north of Structure N28, east of Brick Tower N3 (© SIAM, Florence Doyen)

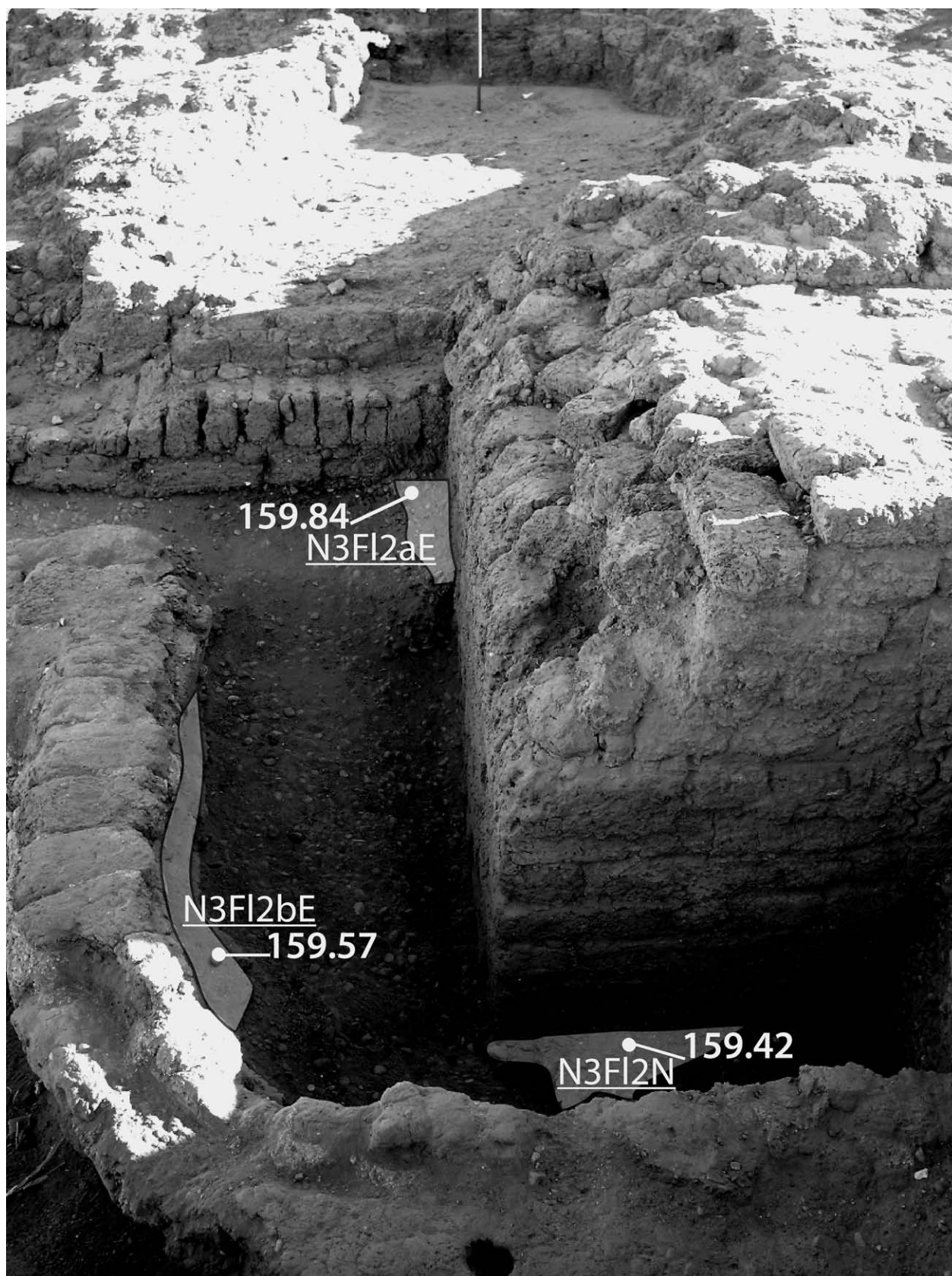


Plate 9 Remains of floors to east and north of Brick Tower N3, view to south (© SIAM, Florence Doyen)

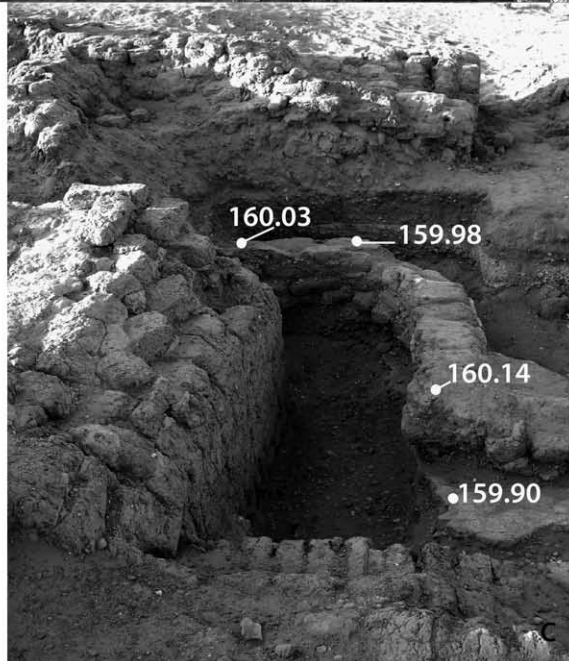
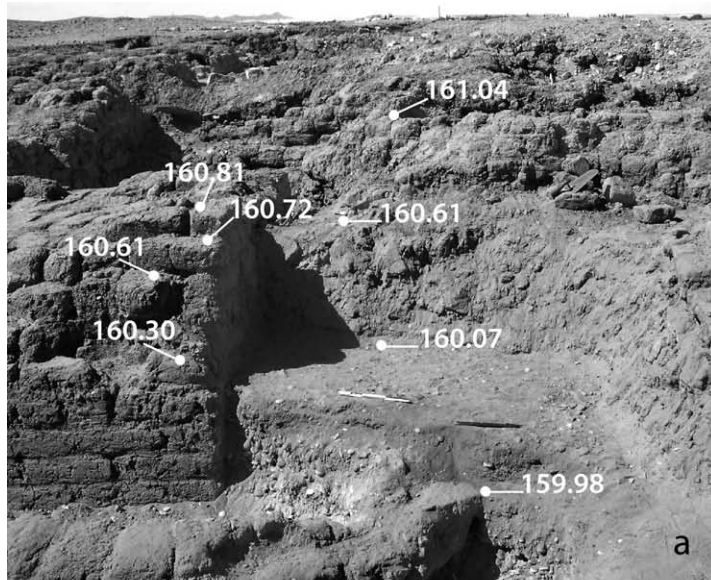


Plate 10 Curving Wall 01W, below later Brick Tower N2, views to west (a), northwest (b) and north (c)  
(© SIAM, Florence Doyen)



Plate 11 Building unit N24, view to northwest (© SIAM, Florence Doyen)

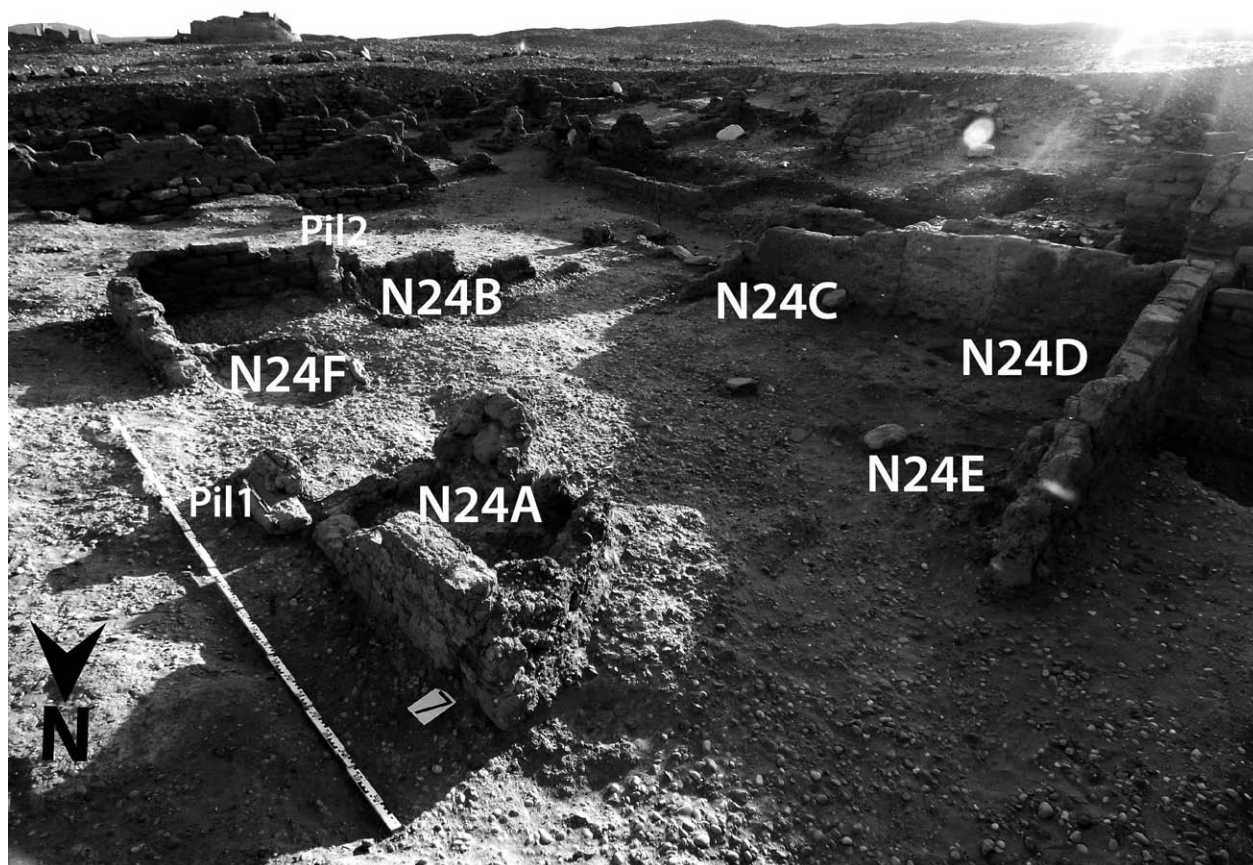


Plate 12 Building unit N24, view to southwest (© SIAM, Florence Doyen)

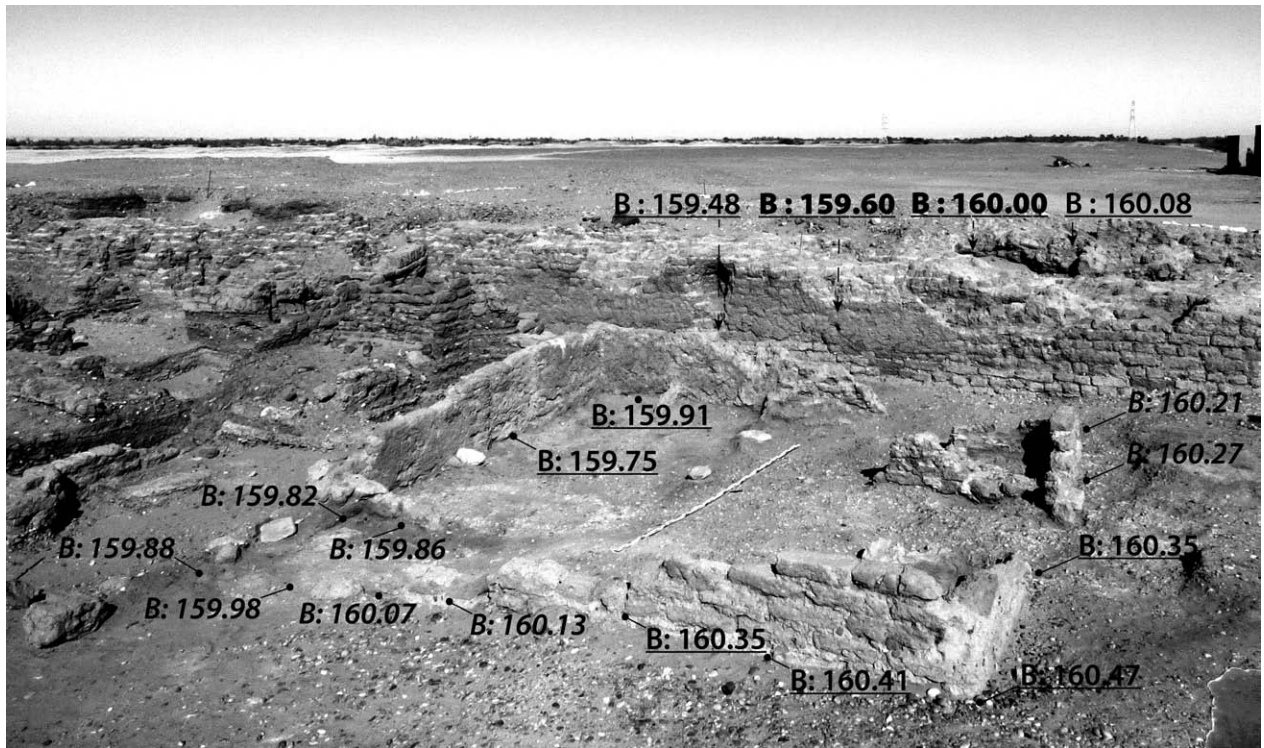


Plate 13 Building unit N24, with footing altitudes of N24's perimeter walls and the inner side of Enclosure Wall N4, view to northwest (© SIAM, Florence Doyen)



Plate 14 Building unit N25, view to west (© Roberto Ceccacci)



Plate 15 Inner northeastern corner of N25, view to east (© SIAM, Florence Doyen)

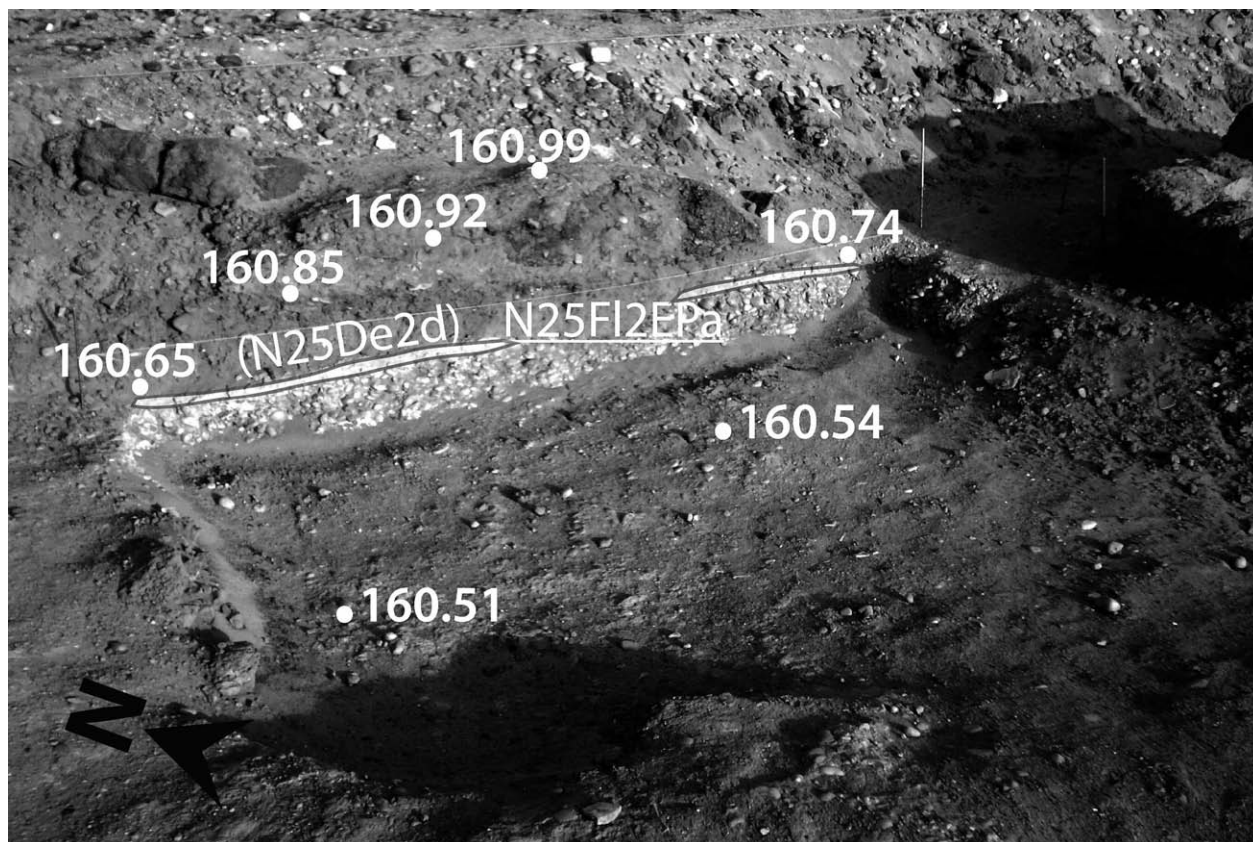


Plate 16 Eastern part of N25, view to east (© SIAM, Florence Doyen)



Plate 17 Building unit N12, view to northwest (© SIAM, Florence Doyen)



Plate 18 The collapsed piece of Wall 42S, view to west (© SIAM, Florence Doyen)



Plate 19 Wall 42N's outer face, view to southeast (© SIAM, Florence Doyen)

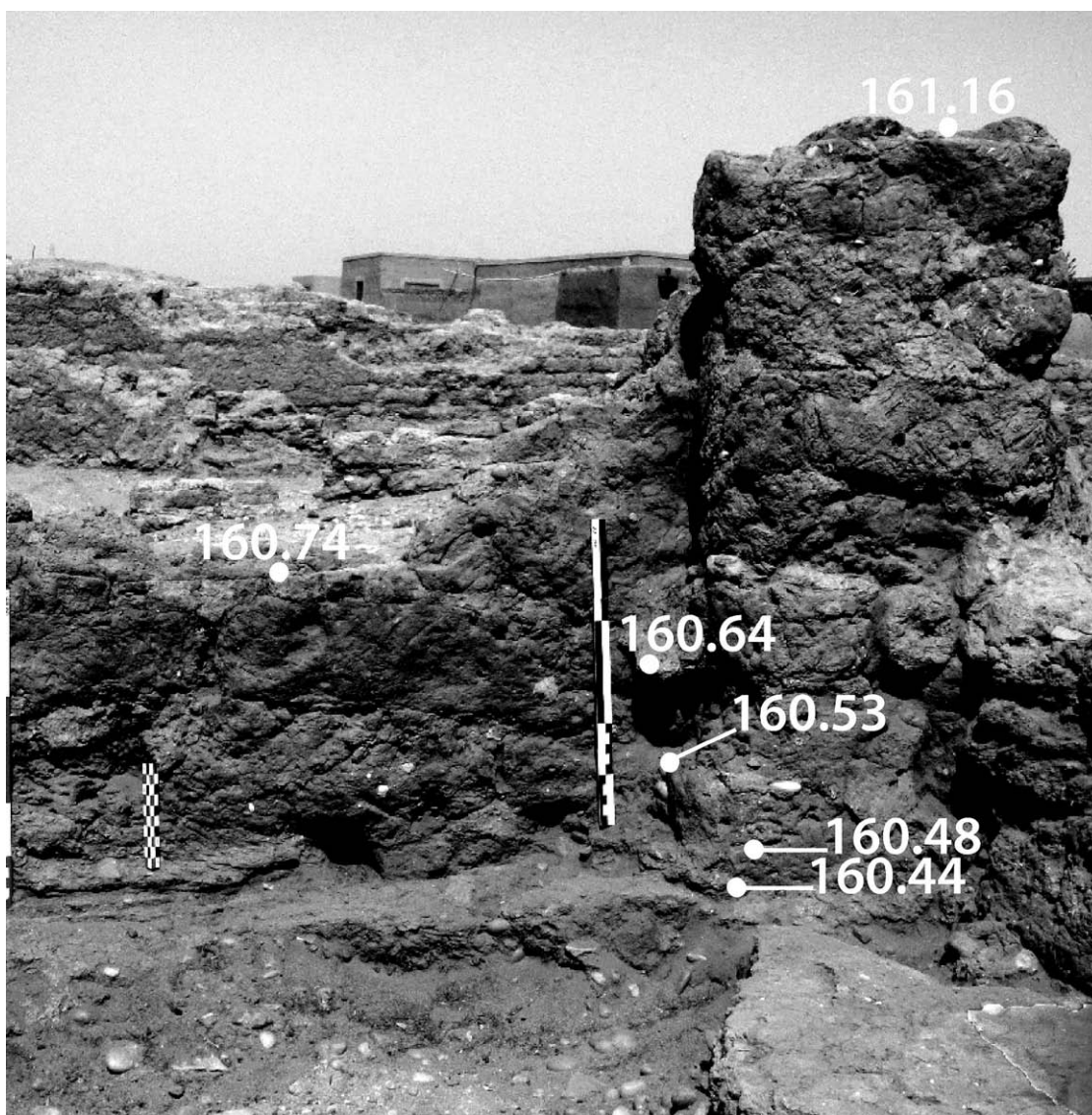


Plate 20 N12Pil8, view to north (© SIAM, Florence Doyen)



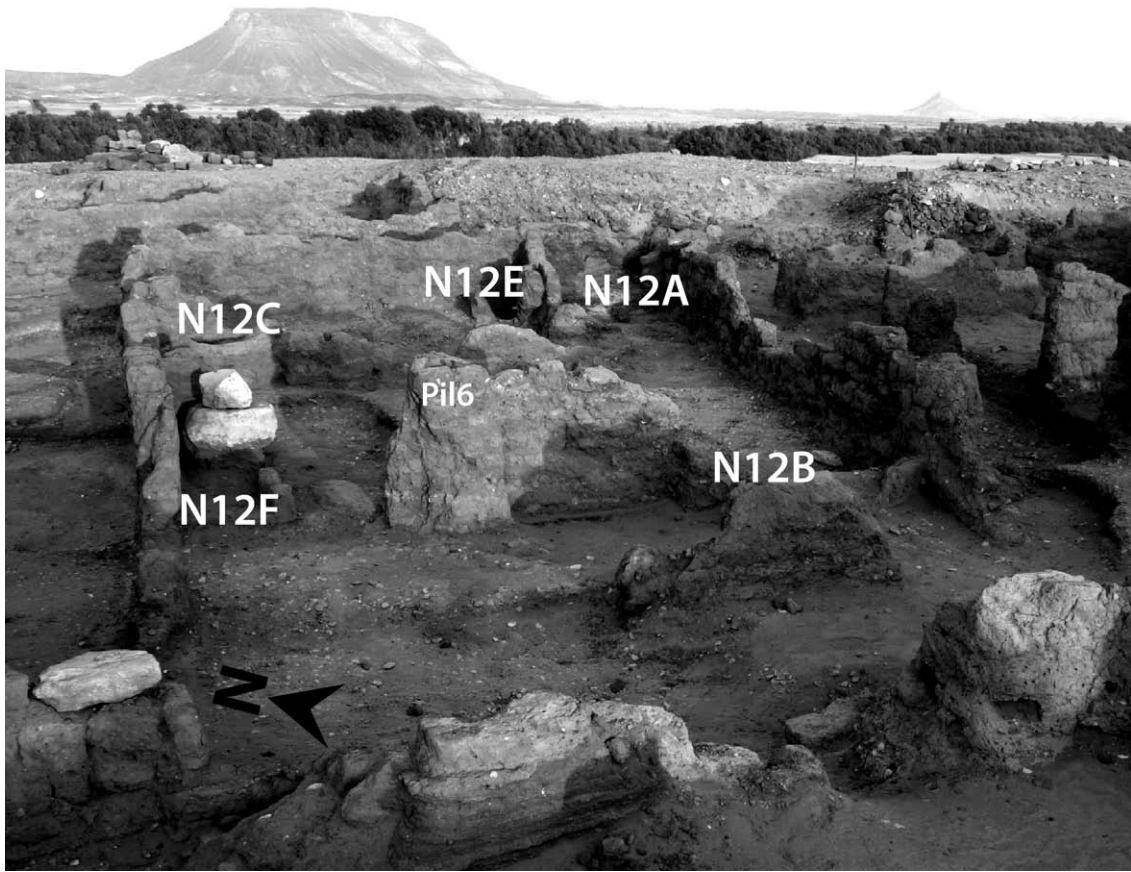


Plate 21 Building unit N12, view to east (© SIAM, Florence Doyen)

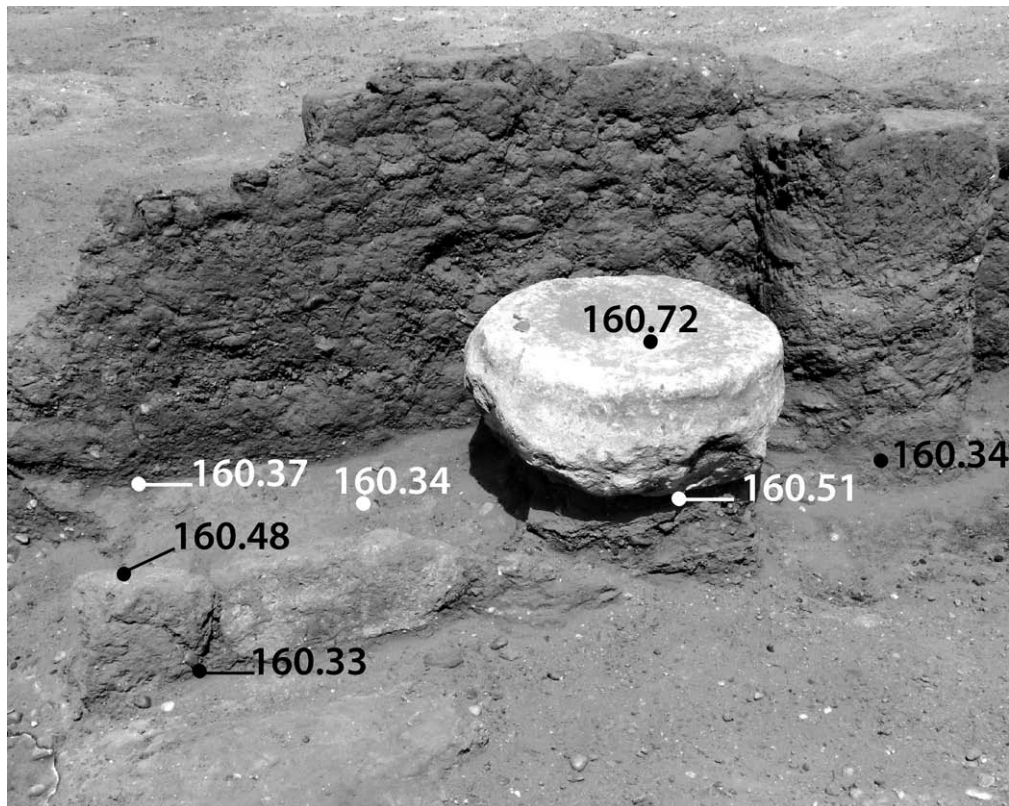


Plate 22 Installation N12F, view to north (© SIAM, Florence Doyen)

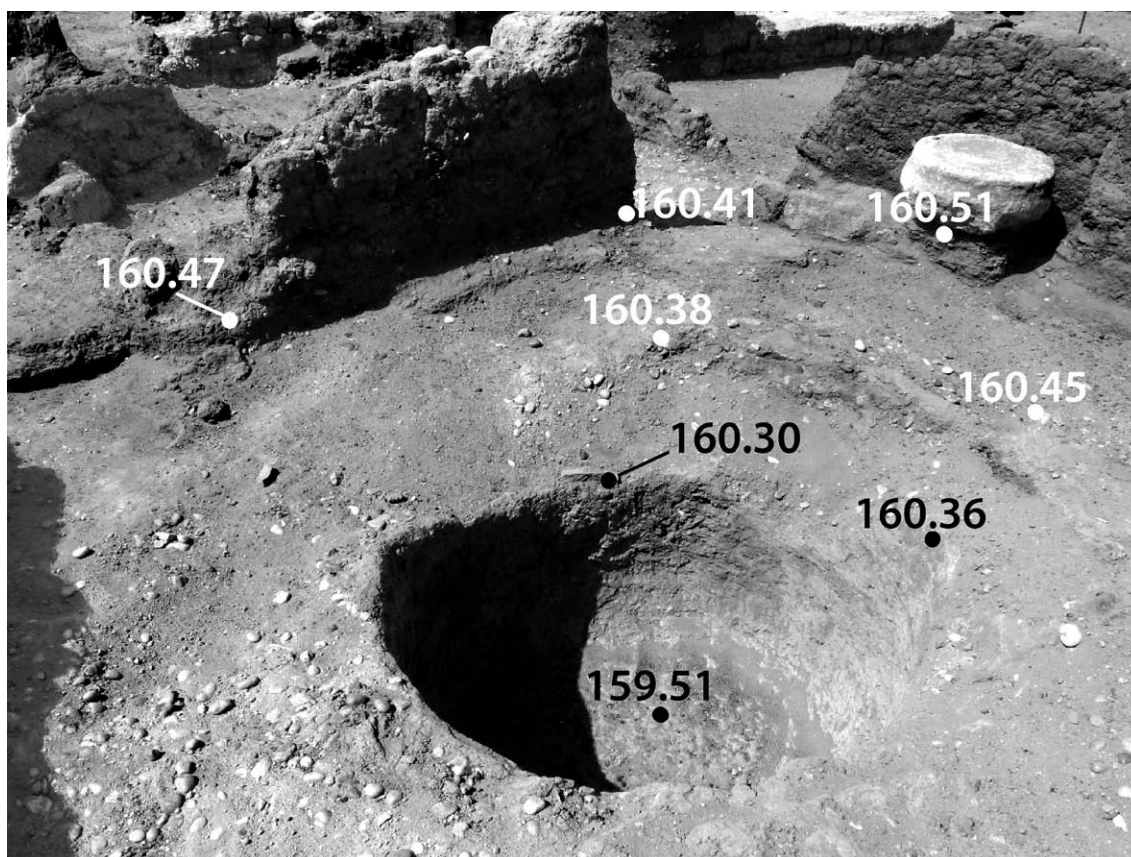


Plate 23 Installation N12D, view to northwest (© SIAM, Florence Doyen)

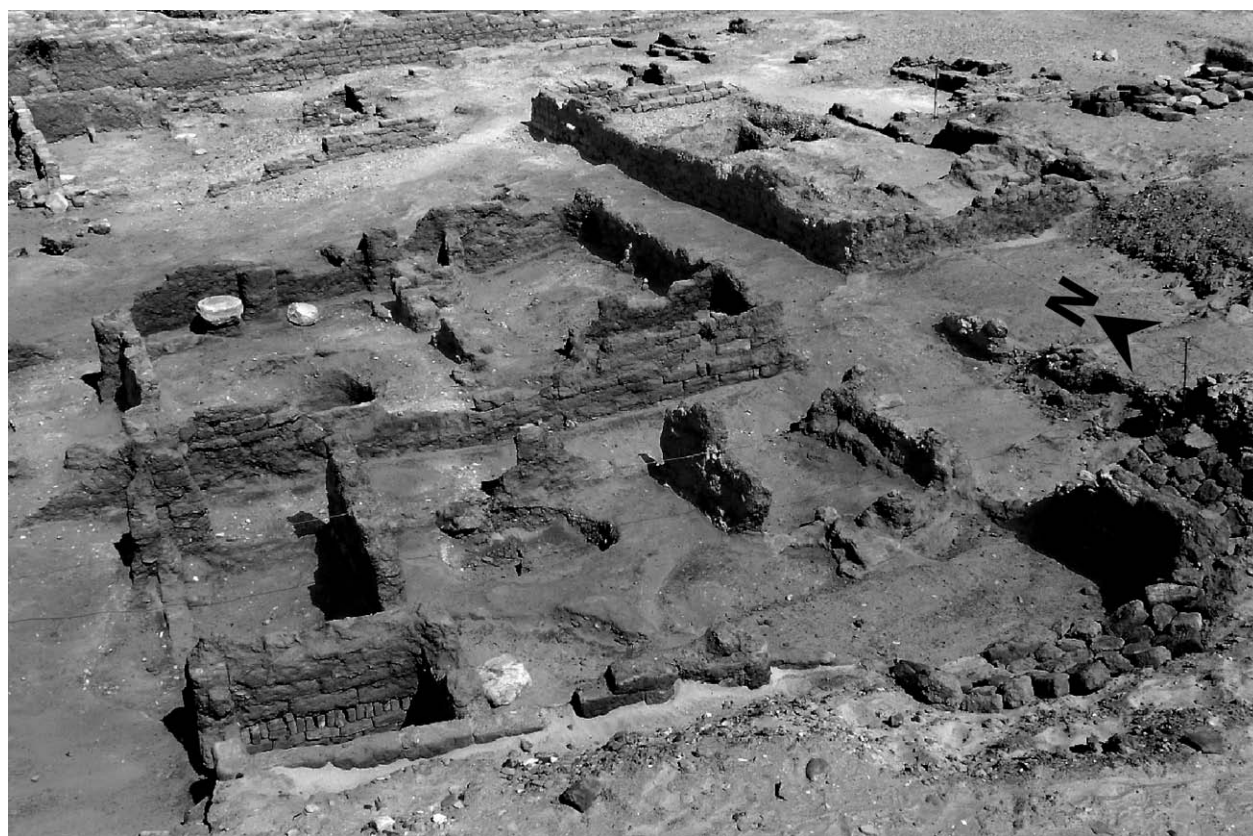


Plate 24 Building unit N26, view to northeast (© SIAM, Florence Doyen)

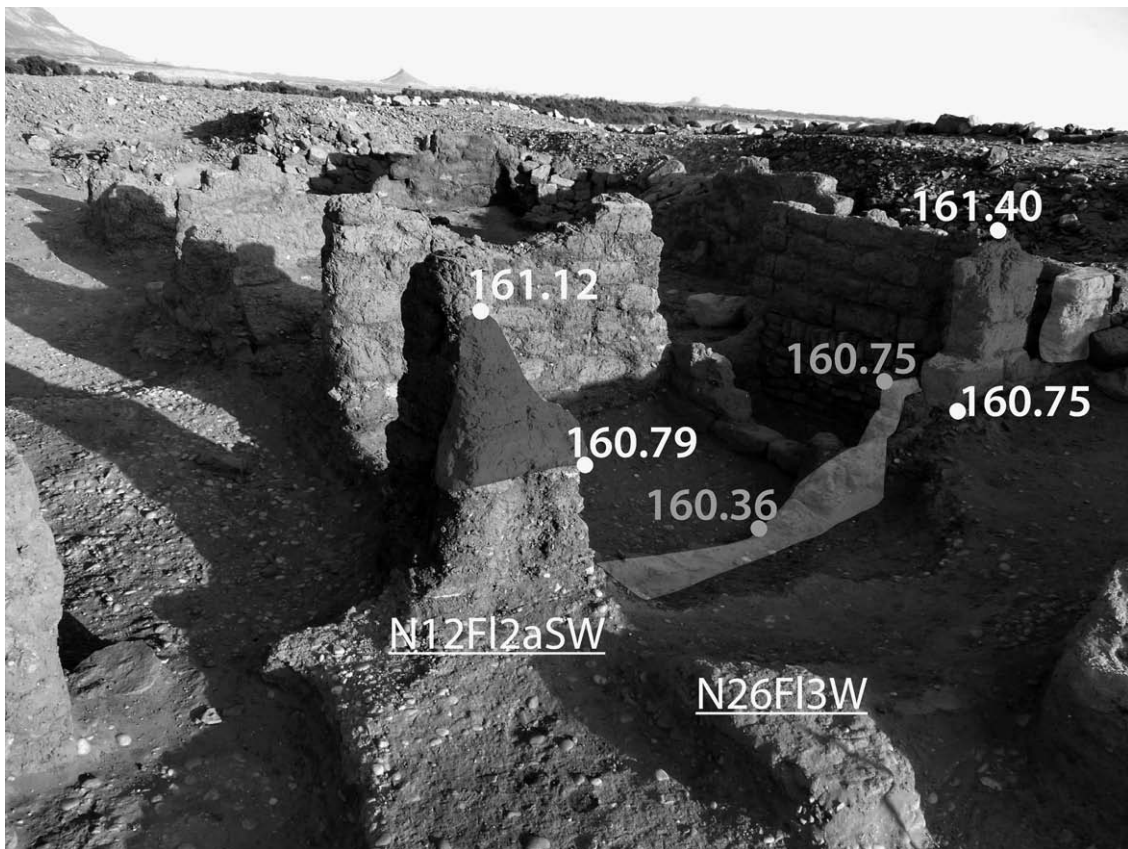


Plate 25 N26's northwestern corner, view to southeast (outer wythe 47W in mid grey, inner wythe 44W in light grey)  
(© SIAM, Florence Doyen)

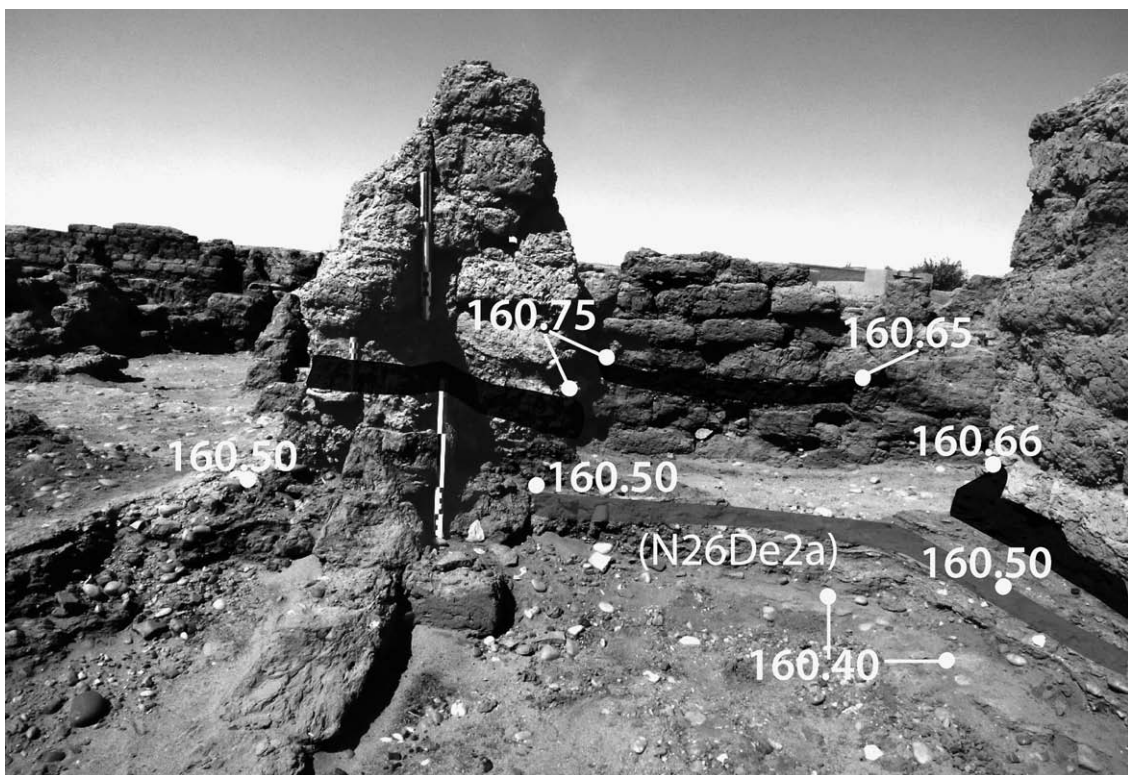


Plate 26 N26's northwestern corner, view to north (Floor N26FI2R2 in mid grey,  
Deposits (N26De4a) and (N12De4a) in dark grey) (© SIAM, Florence Doyen)

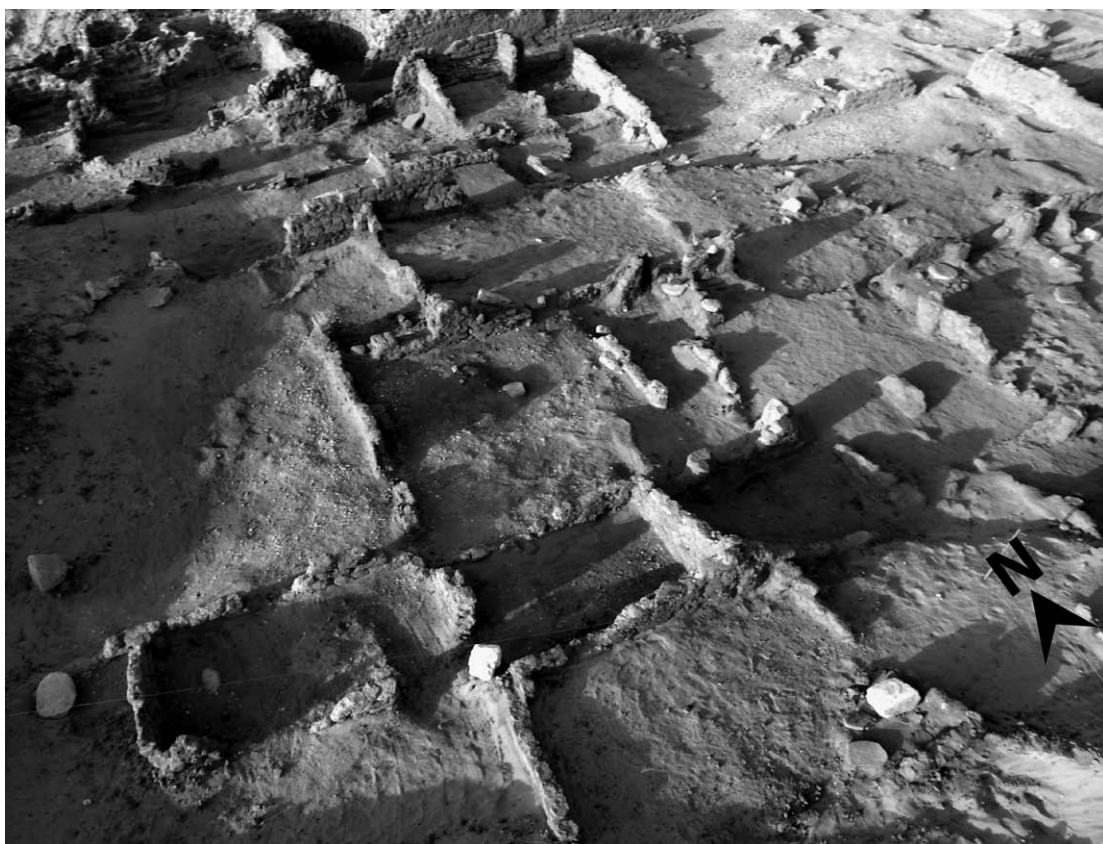


Plate 27 Building unit N27, view to north (© Roberto Ceccacci)



Plate 28 Building unit N27, view to northwest (© SIAM, Florence Doyen)

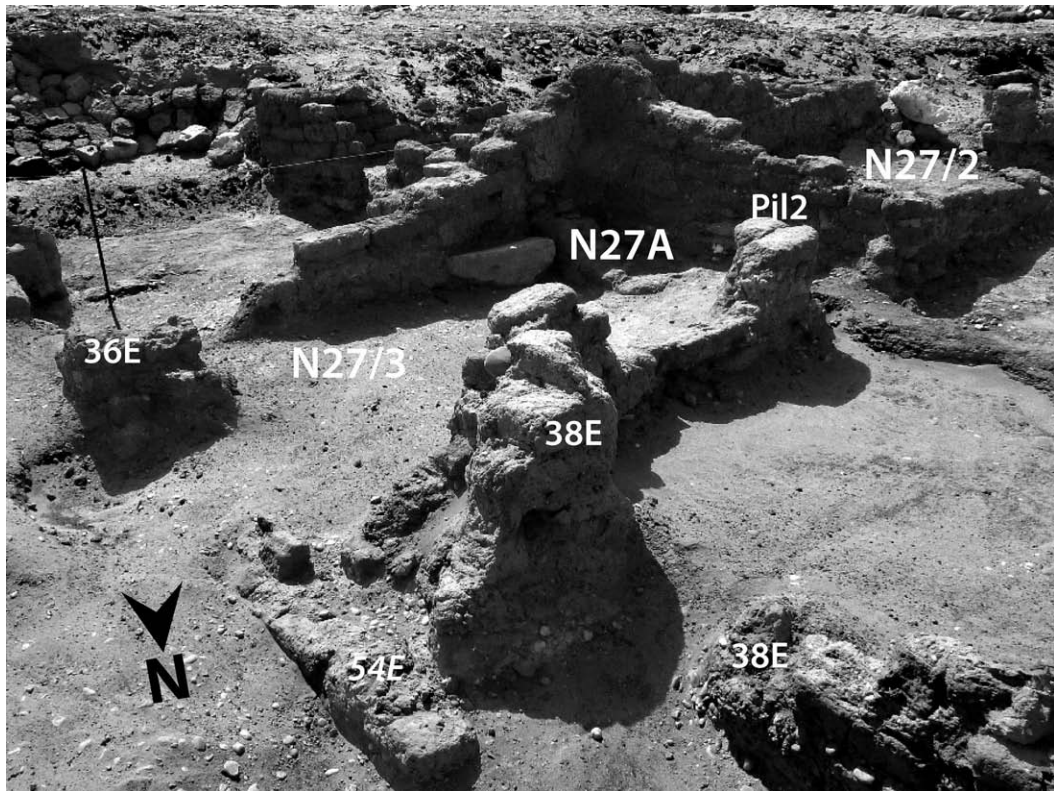


Plate 29 Side room N27/3, view to southwest (© SIAM, Florence Doyen)

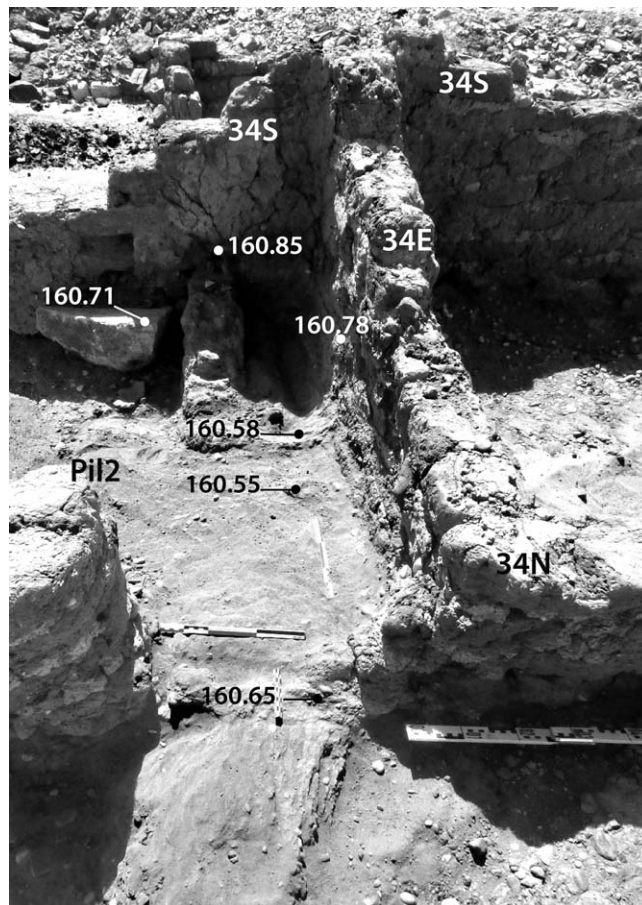


Plate 30 Installation N27A, within side room N27/3, view to south (© SIAM, Florence Doyen)



Plate 31 Upper part of pilgrim flask in Marl D (N/C 69) (© SIAM, Florence Doyen)

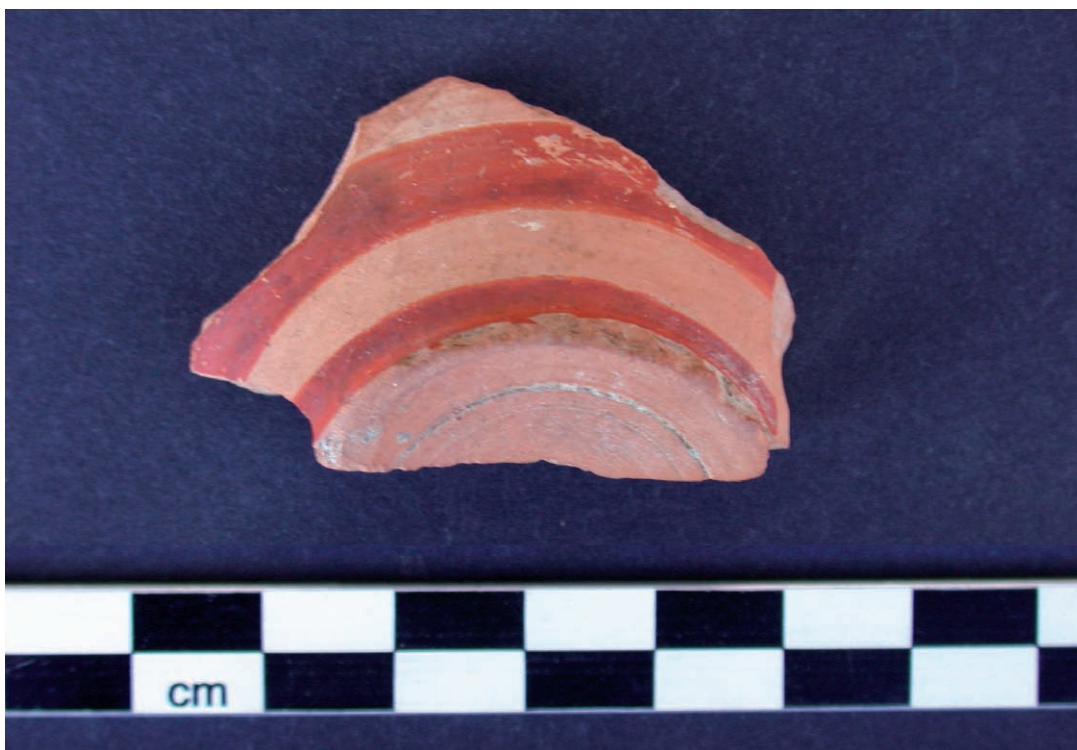


Plate 32 Mycenaean stirrup jar (N/C 616) (© Julia Budka)



Plate 33 Square 180/2270 with walls of Levels 2 and 3 and cluster of ceramic vessels in Level 4 (view to northeast) (© SIAM, Florence Doyen)



Plate 34 Bichrome painted Nile clay jug (N/C 606) (© Julia Budka)



Plate 35 Pottery fertility figurine  
(SAVIN 071) (© AcrossBorders, Meg Gundlach)



Plate 36 Top of pottery fertility figurine  
(SAVIN 457) (© AcrossBorders, Meg Gundlach)



Plate 37 Scarab with floral design, Level 3  
(SAVIN 693) (© SIAM, Florence Doyen)



Plate 38 Scarab with cartouche of Thutmose III, Level 2  
(SAVIN 615) (© SIAM, Florence Doyen)





Plate 39 Pounder from N24 (SAVIN 2427) (© AcrossBorders, Meg Gundlach)



Plate 40 Grindstone from N24 (SAVIN 2432) (© AcrossBorders, Meg Gundlach)



Plate 41 Handmill from N24 (SAVIN 2428) (© AcrossBorders, Meg Gundlach)

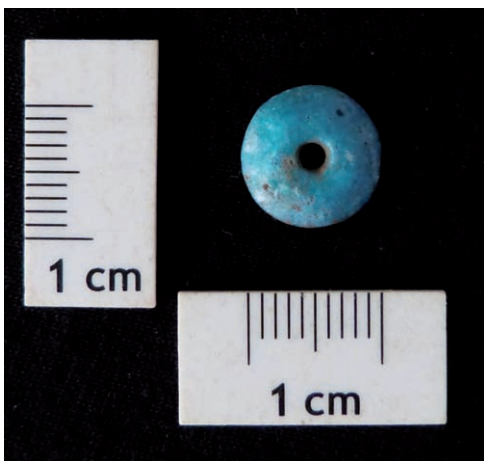


Plate 42 Disc bead from N24A (SAVIN 2426)  
(© AcrossBorders, Meg Gundlach)



Plate 43 Whetstone from N12 (SAVIN 2174)  
(© SIAM, Florence Doyen)



Plate 44 Net-weight from N12 (SAVIN 2046)  
(© SIAM, Florence Doyen)



Plate 45 Ringbase of ceramic dish, re-worked as a lid, from N12  
(SAVIN 2312) (© SIAM, Florence Doyen)



Plate 46 Fragmented lid of calcite vessel from N12D  
(SAVIN 2194) (© SIAM, Florence Doyen)

